



Interactive Touchscreen Table: Meet UP Edition

A dynamic, battery powered and mobile device ideal for care homes, social groups and team activities.

www.sharp.co.uk

SHARP
Be Original.

Introducing the Interactive Touchscreen Table: Meet UP.

The robust and durable table uses the latest 10-point touch technology to accommodate a number of users at any one time - perfect for group activities and games.

The Interactive Touchscreen Table: Meet UP is a mobile interactive device, ideal for engaging and exciting activities for everyone, fulfilling their entertainment needs.

Designed with older people in mind

The Meet UP is a great way to engage your residents in a range of different activities – such as games, brain training, learning and elderly care technology. With a rise in awareness of the loneliness and isolation residents can feel during their time in care homes, organisations are tackling this issue by finding new ways to keep residents engaged. The Meet UP offers an effective solution to this problem, with an intuitive touchscreen device that can be used by multiple users at once. The Meet UP comes with toughened and durable safety glass which can be wiped-clean. With a robust steel structure and sleek oak wooden finish, the table is designed to withstand intense daily use.

The table features adjustable legs, enabling it to be raised or lowered, depending on the needs of the users. Built with wheels, so it can be easily manoeuvred from room to room, the table also has locking brakes for added safety and security.

The screen can be easily tilted and locked into position, allowing users to interact together around the table on apps, games or puzzles. Alternatively, the table can be tilted further through to 68 degrees for residents to watch videos - and for use for administration and staff training uses.

Evidence creativity and activities

The Meet UP can be securely connected directly to the internet via Wi-Fi, or linked to another wireless or Bluetooth device. This useful feature allows for the device to be connected to a printer - perfect if the user needs to print information or activities completed by their residents.



Helping you offer top quality care to your residents.

Keep up with current Care Quality Commission (CQC) regulations by offering the latest technology to your care-home residents.

The Care Quality Commission (CQC) recommend that homes offer their residents person centred care alongside access to beneficial technology that can help them to gain confidence and independence. The Meet UP provides an effective solution to a care home's technological needs, helping you ensure that your service is in line with the CQC's regulations.

Benefits of technology in care

Technology can help residents to:

- Gain more control over their wellbeing
- Be more independent or feel less isolated
- Find services which are important to them
- Communicate with families, professionals and staff

Technology also provides carers and staff with a number of benefits. Utilising technology can:

- Help staff to prioritise and focus their attention on people who need it most
- Capture and compare data, and share good practice with peers
- Offer insight into a resident's development and wellbeing through apps and activities
- Enhance the care or treatment providers offer

Technology is revolutionising the ways in which care homes are operated and how services are offered to residents. The Meet UP is the ideal product for a modern and forward-thinking care home - allowing service providers to introduce technology to their carers and residents while also providing them with entertainment, group activities and elderly care programmes, and ensuring there is a focus on person centred care.



A unique self-contained mobile solution.

Powered by a built-in battery pack, simply charge the table overnight and unplug to use throughout the day, eliminating trip hazards and maximising mobility.

The Meet UP comes complete with an integrated Full HD resolution screen for the highest visual clarity. Using the latest P-CAP touch technology, its multi-touchscreen encourages group interaction. The self contained, compact and future-proofed solution requires minimal storage space.

Cable-free and mobile activity centre

The battery pack allows the Meet UP to be used up to 8 hours from one single charge.



Interactive Touchscreen Table: Meet UP - battery life panel.



Intuitive natural touch user experience.

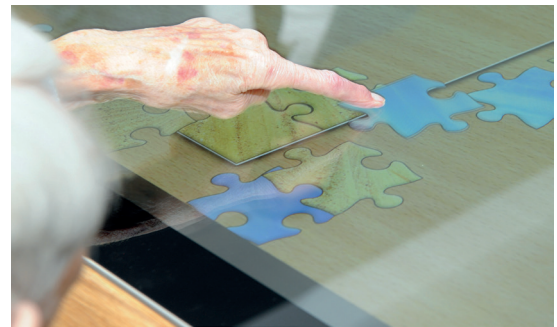
The screen uses the latest P-CAP touch technology providing a more responsive and natural experience, helping users to easily access materials.

Helping residents get the best experience

The Meet UP allows residents to explore a wide range of media and materials from the comfort of their social room. The innovative P-CAP touch technology makes it easy for older users to use apps and resources. The responsive and natural touch means that even those with limited dexterity will still be able to gain the most out of their interactive experience.

The table allows users to learn new skills, access information and play games with their fellow residents - helping to alleviate some of the isolation and boredom they may feel as an older person.

The RemindMecare app enables personalisation of the experience and the recording of outcomes to ensure that new knowledge is captured to inform and enhance subsequent engagements.





Enhance skills & friendships with connected technology.

The Meet UP makes it easy for care homes to offer residents person centred care, offering them more control, independence and helping them feel less isolated.

Helping residents get the best experience

The Meet UP allows residents to explore a wide range of media and materials from the comfort of their social room. The innovative P-CAP touch technology makes it easy for older users to use apps and resources. The responsive and natural touch means that even those with limited dexterity will still be able to gain the most out of their interactive experience.

The table allows users to learn new skills, access information and play games with their fellow residents - helping to alleviate some of the isolation and boredom they may feel as an older person.

The RemindMecare app enables personalisation of the experience and the recording of outcomes to ensure that new knowledge is captured to inform and enhance subsequent engagements.

Developing digital skills

The use of technology in a care home environment is key to residents becoming familiar with and understanding digital technology, keeping their brains active and their minds fulfilled. Interaction and human contact are an essential aspect of our lives - and the Meet UP makes it easy for groups to enjoy games, resources and technology together, mitigating the effects of loneliness they may feel.

Convenient connectivity

The Meet UP has a built-in Android player saving you from having to connect an external device for uploading and displaying content. You can quickly and easily connect to the internet via the Wi-Fi feature to stream music or videos. Connect to an external device such as a speaker or printer via Bluetooth or wireless. An optional slot in the Windows PC expands functionality - designed and developed especially for Sharp.

RemindMeCare application for 'person-centred' care

Developed with person-centred care and dementia support in mind, the RemindMecare (ReMe) app empowers the residents to create their own interactive log of thier life.

The RemindMecare (ReMe) app provides residents with their own profile where they, or their carer, can upload details about their life, discover engaging content and record the day's events and their feelings - allowing them to keep an interactive log of their lives which can be looked back on, and shared with love ones.

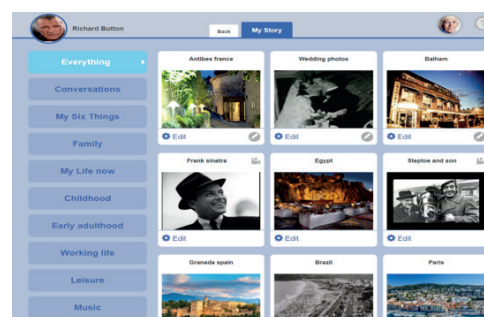
ReMe makes it possible to capture a rich outcomes-based data set from the various activities. Data is collected in the background of the app and is automatically posted to the individual's personal profiles. The ReMe app also provides a range of other functionalities that are ideally suited to use on the Meet UP table, such as Skype video calling for family connectivity, and access a vast library of music and films via YouTube of other online resources. Music and discovery-based reminiscence therapies that can be personalised for each resident based on their interests recorded in their personal profile, ensuring a tailored experience.

The ideal application for the Meet UP devices

Perfect for use with our Interactive Touch Screen Table: Meet UP, RemindMecare is an intuitive app that is designed to enhance Person Centred Care for the elderly in care homes, day centres and care facilities. One key feature is the life story discovery programme - a powerful tool for dementia care patients. Centred around the individual, with the ability for family members to add imagery and video content, the care home residents can look back at key points in their lives and reminisce.

The Interactive Touch Screen Table: Meet UP enabled with ReMe software is specifically designed to assist care providers to deliver outstanding care and meet the ever-increasing expectations of the Care Quality Commission (CQC). Its core purpose is to support care providers to adopt technology to improve person-centred care and evidence activity provision through the capture of user

data, duration, engagement and outcomes statistics. A big benefit of using the Meet UP for ReMe is that the screen is fully adjustable, so can be raised or lowered and even tilted according to the users' needs – so whether the user is wheelchair bound, standing or sitting on a sofa the table is accessible. Additionally the 40 inch LCD touchscreen is ideal for users with restricted eyesight, who may struggle to see content on a smaller hand-held tablet.



Example of a RemindMecare profile

ReMe App Library (RAL)

RemindMe App Library provides an aggregated, vetted selection of apps available from the Google Play Store. This library of ever ready and varied cognitively stimulating activities that can be bespoke to the interests of the users, whether for one to one or group activities.

When using these apps, the care worker is prompted to complete the wellbeing survey, as per the in-built activities within ReMe.



Specifications

Display	Model PN-40TC1
LCD Panel	40-inch-class widescreen (39 1/2-inch [100.33 cm] diagonal) TFT LCD
Max. Resolution	1,920 x 1,080 pixels
Max. Display Colours (approx.)	16.77 million colours
Pixel Pitch (H x V)	0.45735 x 0.4494 mm
Max. Brightness (average)*	1 300 cd/m2 [†]
Contrast Ratio	5,000 : 1
Active Screen Area (W x H) (approx.)	878.1 x 485.3 mm (34 9/16" x 19 3/32")
Response Time	9.5 ms (grey to grey, avg.)
Backlight LED,	Edge lit
Touchscreen	
Touch Technology	Projected Capacitive Touch (P-CAP)
Power Supply	Supplied from main unit
Multi Touch	10 points
Protection Glass Shock Resistance:	130 cm ^{†2}
PC Connection Port	USB (2.0 compliant) (Type B) x 1
Computer Input	
Video	Analogue RGB (0.7 Vp-p) [750], HDMI, DisplayPort
Synchronisation	Horizontal/vertical separation (TTL: positive/negative)
Plug & Play	VESA DDC2B
Power Management	VESA DPMS
Speaker Output	10 W + 10 W
Power Supply	100V – 240V AC, 50/60 Hz
Power Consumption	89W
Operating Temperature	5 °C to 30 °C
Operating Humidity	20% to 80% RH (no condensation)
Weight (approx.) (display only)	17.5 kg (38.6 lbs)
Main Accessories	AC power cord, remote control unit, battery (AAA size)
Input Terminals	HDMI x 1, DisplayPort x 1 (HDCP), Audio Out L/R
USB Hub Function	USB 2.0 (Type A) x 2

Android Player	
OS	6.0
CPU	Octa core, RK3368 ARM-Cortex-A53 64 bit, up to 1.5GHz
GPU	High performance GPU with maximum 600 MHz Frequency, PowerVR G6110
Memory	2GB RAM DDR3
Storage Internal	16GB eMMC NAND FLASH
Storage External	Micro-SDS/Micro-SDHC Card, max 32GB
Wi-Fi	Dual Band 2.4GHz/5GHz WiFi, IEEE 802.11 b/g/n/ac
Bluetooth	4.0
Power Supply	DC 5V/2.5A, 3.5mm DC in
USB	USB 2.0 (Type A) x 2

Fully Assembled Interactive Touchscreen Table: Meet UP Edition

Overall Dimensions (W x D x H)	1121 x 728 x 650 mm (44.13" x 28.66" x 25.59")
Overall Weight	120kg
Battery Type	NP12-55Ah 12V55Ah
Nominal Voltage	12V
Rated capacity (10 hour rate)	55Ah

Optional

PN-ZB03PC Mini OPS PC	
OS	Windows 10 IoT Enterprise 2015 LTSB (64 bit)
CPU	Intel Celeron N3160 Processor 1.6GHz
Main memory	4 GB
Storage	SSD 64GB



* The Interactive Touchscreen Table: Meet UP Edition is not a Sharp product. Sharp Business Systems UK (SBS UK) is the exclusive distributor of the product, but not the producer. The product has been designed and manufactured by a third-party which has provided SBS UK with detailed specifications.

[†] Brightness depends on input mode and other picture settings. Brightness level will decrease slightly over the life of the product. Due to the physical limitations of the equipment, it is not possible to maintain a precisely constant level of brightness. 300 cd/m2 is the brightness of the LCD panel component. The brightness of the panel itself may be less than this. ^{†2} Approximate distance at which the glass panel can withstand the impact of a 500-gram iron ball dropped on its centre.