

MODEL

AL-1633

AL-1644

DIGITAL MULTIFUNCTIONAL SYSTEM

SOFTWARE SETUP GUIDE

	Page
• INTRODUCTION	1
• SOFTWARE FOR THE SHARP AL-1633/1644	2
• BEFORE INSTALLATION	3
• INSTALLING THE SOFTWARE	4
• CONNECTING TO A COMPUTER	10
• CONFIGURING THE PRINTER DRIVER	11
• SETTING UP BUTTON MANAGER	12
• HOW TO USE THE ONLINE MANUAL	14
• TROUBLESHOOTING	15

INTRODUCTION

This manual explains how to install and configure the software that is required for the printer and scanner functions of the machine. The procedure for viewing the Online Manual is also explained.



- The screen images in this manual are mainly for Windows XP. With other versions of Windows, some screen images may be different from those in this manual.
- The explanations in this manual are based on the North American version of the software. Versions for other countries and regions may vary slightly from the North American version.
- Where "AL-XXXX" appears in this manual, please substitute the name of your model for "XXXX". For the name of your model, see "DIFFERENCES BETWEEN MODELS" in the Operation Manual.
- This manual refers to the "SHARP DIGITAL MULTIFUNCTIONAL SYSTEM AL-1633/1644 Software" CD-ROM simply as "CD-ROM".

Trademark acknowledgments

- Microsoft® Windows® operating system is a trademark or copyright of Microsoft Corporation in the U.S.A. and other countries.
- Windows® 95, Windows® 98, Windows® Me, Windows NT® 4.0, Windows® 2000, and Windows® XP are trademarks or copyrights of Microsoft Corporation in the U.S.A. and other countries.
- Acrobat® Reader Copyright© 1987- 2002 Adobe Systems Incorporated. All rights reserved. Adobe, the Adobe logo, Acrobat, and the Acrobat logo are trademarks of Adobe Systems Incorporated.
- IBM and PC/AT are trademarks of International Business Machines Corporation.
- All other trademarks and copyrights are the property of their respective owners.

CONTENTS

SOFTWARE FOR THE SHARP AL-1633/1644.....	2
BEFORE INSTALLATION	3
● HARDWARE AND SOFTWARE REQUIREMENTS	3
● INSTALLATION ENVIRONMENT AND USEABLE SOFTWARE	3
● INSTALLATION ENVIRONMENT AND INSTALLATION PROCEDURE.....	3
INSTALLING THE SOFTWARE	4
● INSTALLATION IN WINDOWS XP (USB/PARALLEL CABLE)	4
● INSTALLATION IN WINDOWS 98/ME/2000 (USB CABLE).....	6
● INSTALLATION IN WINDOWS 95/98/ME/NT4.0/2000 (PARALLEL CABLE)	8
CONNECTING TO A COMPUTER	10
● CONNECTING A USB CABLE	10
● CONNECTING A PARALLEL CABLE	10
CONFIGURING THE PRINTER DRIVER	11
SETTING UP BUTTON MANAGER	12
● Windows XP.....	12
● Windows 98/Me/2000	13
HOW TO USE THE ONLINE MANUAL	14
TROUBLESHOOTING	15

SOFTWARE FOR THE SHARP AL-1633/1644

The CD-ROM that accompanies the machine contains the following software:

MFP driver

Printer driver

The printer driver enables you to use the printer function of the machine.

The printer driver includes the Print Status Window. This is a utility that monitors the machine and informs you of the printing status, the name of the document currently being printed, and error messages.

Scanner driver

The scanner driver allows you to use the scanning function of the machine with TWAIN-compliant and WIA-compliant applications.

Sharpdesk

Sharpdesk is an integrated software environment that makes it easy to manage documents and image files, and launch applications.

Button Manager

Button Manager allows you to use the scanner keys on the machine to scan a document.



The scanning feature can only be used with computers that are running Windows 98/Me/2000/XP and are connected to the machine by a USB cable. If you are running Windows 95/NT 4.0 or are connected by a parallel cable, only printing is available.

BEFORE INSTALLATION

HARDWARE AND SOFTWARE REQUIREMENTS

Check the following hardware and software requirements before installing the software.

Computer type	IBM PC/AT or compatible computer equipped with a USB 1.1* ¹ or bi-directional parallel interface (IEEE 1284)
Operating system* ²	Windows 95, Windows 98, Windows Me, Windows NT Workstation 4.0 (Service Pack 5 or later)* ³ , Windows 2000 Professional* ³ , Windows XP Professional* ³ , Windows XP Home Edition* ³
Display	800 x 600 dots (SVGA) display with 256 colors (or better)
Hard disk free space	150 MB or more
Other hardware requirements	An environment on which any of the operating systems listed above can fully operate

*¹ Compatible with Windows 98, Windows Me, Windows 2000 Professional, Windows XP Professional or Windows XP Home Edition preinstalled models equipped with a USB interface as standard.

*² Printing is not available in MS-DOS mode.

*³ Administrator's rights are required to install the software using the installer.

INSTALLATION ENVIRONMENT AND USEABLE SOFTWARE

The software that can be installed varies depending on the operating system and type of connection to the machine.

	MFP Driver		Button Manager	Sharpdesk
	Printer driver	Scanner driver		
Windows 98/Me/2000/XP USB connection	Available* ¹	Available	Available	Available
Windows 95/98/Me/NT 4.0/2000/XP Parallel connection		Not Available	Not Available	Available* ²

*¹ When the machine is connected using a parallel cable, the Print Status Window can only be used when the parallel port is set to ECP mode. To set the parallel port mode, refer to your computer manual or ask the manufacturer of your computer.

*² Sharpdesk can be installed when using a parallel cable, however, the machine's scanner function cannot be used.

INSTALLATION ENVIRONMENT AND INSTALLATION PROCEDURE

Follow the appropriate installation procedure for your operating system and type of cable as indicated below.

Operating system	Cable	Procedure to follow
Windows XP	USB/Parallel	INSTALLATION IN WINDOWS XP (USB/PARALLEL CABLE) (p. 4)
Windows 98/Me/2000	USB	INSTALLATION IN WINDOWS 98/ME/2000 (USB CABLE) (p. 6)
Windows 98/Me/2000	Parallel	INSTALLATION IN WINDOWS 95/98/ME/NT4.0/2000 (PARALLEL CABLE) (p. 8)
Windows 95/NT 4.0	Parallel	INSTALLATION IN WINDOWS 95/98/ME/NT4.0/2000 (PARALLEL CABLE) (p. 8)

INSTALLING THE SOFTWARE



- In the following explanations it is assumed that the mouse is configured for right hand operation.
- The scanner feature only works when using a USB cable.
- If an error message appears, follow the instructions on the screen to solve the problem. After the problem is solved, the installation procedure will continue. Depending on the problem, you may have to click the "Cancel" button to exit the installer. In this case, reinstall the software from the beginning after solving the problem.
- When installing Sharpdesk, a minimal version of Internet Explorer 5.01 will be installed on your computer if your computer does not currently have Internet Explorer version 4.01 or later

INSTALLATION IN WINDOWS XP (USB/PARALLEL CABLE)

1 The USB or parallel cable must not be connected to the machine. Make sure that the cable is not connected before proceeding.

If the cable is connected, a Plug and Play window will appear. If this happens, click the "Cancel" button to close the window and disconnect the cable.



The cable will be connected in step 11.

2 Insert the CD-ROM into your CD-ROM drive.


3 Click the "start" button, click "My Computer" (), and then double-click the CD-ROM icon ().

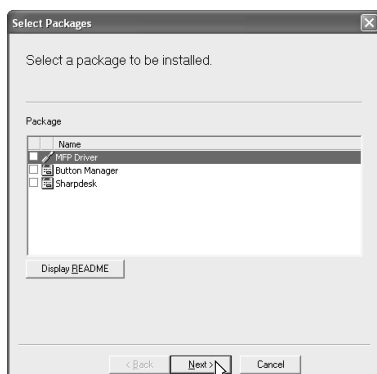
4 Double-click the "setup" icon ().



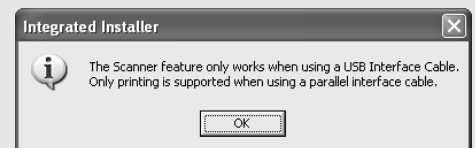
If the language selection screen appears after you double click the "setup" icon, select the language you wish to use and click the "Next" button. (Normally the correct language is selected automatically.)

5 Select the software packages to be installed and then click the "Next" button.

Software packages with a checkmark () in the list on the screen will be installed. Click the "Display README" button to show information on packages that are selected.

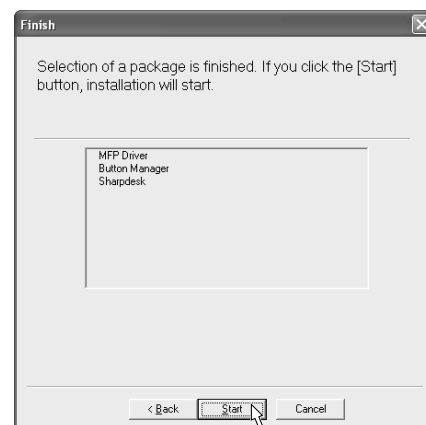


- If you are using a parallel cable, do not select the Button Manager checkbox (this feature is not supported when a parallel cable is used).
- If the following screen appears, click the "OK" button. For the software that can be installed, see "INSTALLATION ENVIRONMENT AND USEABLE SOFTWARE" (p. 3).



6 Check the packages on the screen, and then click the "Start" button.

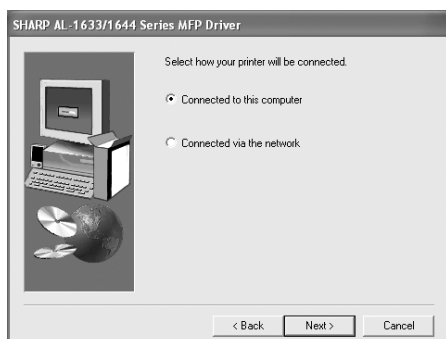
The software packages to be installed will be displayed on the screen. If an incorrect package is displayed, click the "Back" button and select the correct packages.



7 The files required for installation of the MFP driver are copied (if "MFP Driver" was selected in Step 5).

Follow the on-screen instructions.

When you are asked how the printer is connected, select "Connected to this computer" and click the "Next" button.



Caution If the following screen appears while the files are being copied (the message may appear more than once), click the "Continue Anyway" button.



When "The MFP driver installation is complete." appears, click the "OK" button. The Button Manager installer will start.

8 Begin the installation of Button Manager (if "Button Manager" was selected in Step 5).

Follow the on-screen instructions.

Click the "Finish" button when the message informs you that setup is successful. The Sharpdesk installer will start.

9 Begin the installation of Sharpdesk (if "Sharpdesk" was selected in Step 5).

Follow the on-screen instructions.

Click the "Finish" button when the message informs you that Setup is complete.

10 When the "Finish" screen appears, click the "Close" button.

When "Now connect the MFP interface cable to the PC." appears, click the "OK" button.



Note After the installation, a message prompting you to restart your computer may appear. In this case, click the "Yes" button to restart your computer.

11 Connect the interface cable to the machine and your computer (p. 10).

- If you are using a USB cable, make sure the machine's power is turned on and then connect the cable.
- If you are using a parallel cable, turn off the power of the machine and your computer, connect the cable, turn on the power of the machine, and then turn on your computer.

Windows will detect the machine and the Plug and Play screen will appear.

If you are using Windows XP with a parallel cable, go to step 13.

12 Begin installation of the scanner driver. (Only when using a USB cable.)

"SHARP AL-XXXX" will appear in the "Found New Hardware Wizard" dialog box. Select "Install the software automatically (Recommended)", click the "Next" button, and follow the on-screen instructions.

Caution If a warning window appears regarding the "Windows logo test", be sure to click the "Continue Anyway" button.

13 Begin installation of the printer driver.

"SHARP AL-XXXX" will appear in the "Found New Hardware Wizard" dialog box. Select "Install the software automatically (Recommended)" and click the "Next" button. Follow the on-screen instructions.

Caution If a warning window appears regarding the "Windows logo test", be sure to click the "Continue Anyway" button.

This completes the installation of the software.

- If you installed the MFP driver, configure the printer driver settings as explained in "CONFIGURING THE PRINTER DRIVER" (p. 11).
- If you installed Button Manager, set up Button Manager as explained in "SETTING UP BUTTON MANAGER" (p. 12).

INSTALLATION IN WINDOWS 98/ME/2000 (USB CABLE)

- 1 The USB cable must not be connected to the machine. Make sure that the cable is not connected before proceeding.**

If the cable is connected, a Plug and Play window will appear. If this happens, click the "Cancel" button to close the window and disconnect the cable.



The cable will be connected in step 11.

- 2 Insert the CD-ROM into your CD-ROM drive.**

- 3 Double-click "My Computer" (), and then double-click the CD-ROM icon ().**

- 4 Double-click the "setup" icon ().**

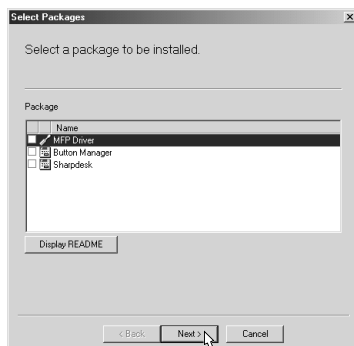


If the language selection screen appears after you double click the "setup" icon, select the language you wish to use and click the "Next" button. (Normally the correct language is selected automatically.)

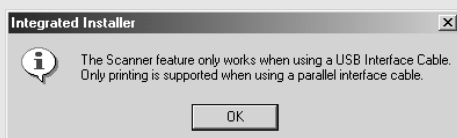
- 5 Select the software packages to be installed and then click the "Next" button.**

Software packages with a checkmark (☒) in the list on the screen will be installed.

Click the "Display README" button to show information on packages that are selected.



If the following screen appears, click the "OK" button.



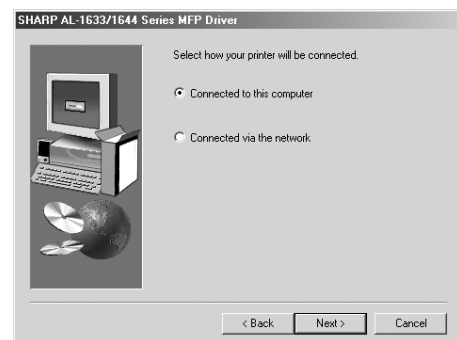
- 6 Check the packages on the screen, and then click the "Start" button.**

The software packages to be installed will be displayed on the screen. If an incorrect package is displayed, click the "Back" button and select the correct packages.

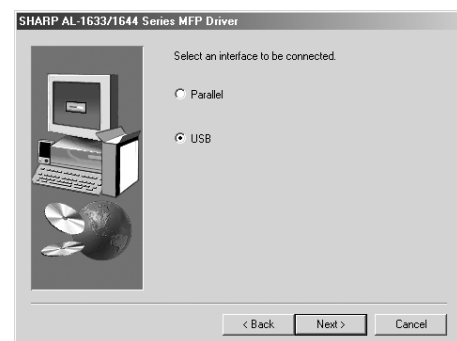
- 7 The files required for installation of the MFP driver are copied (if "MFP Driver" was selected in Step 5).**

Follow the on-screen instructions.

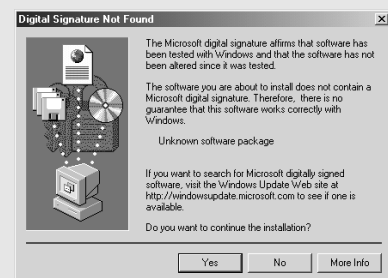
When you are asked how the printer is connected, select "Connected to this computer" and click the "Next" button.



When the interface selection screen appears, select "USB" and click the "Next" button.



In Windows 2000, if the following screen appears while the files are being copied (the message may appear more than once), click the "Yes" button.



When "The MFP driver installation is complete." appears, click the "OK" button. The Button Manager installer will start.

8 Begin the installation of Button Manager (if "Button Manager" was selected in Step 5).

Follow the on-screen instructions.
Click the "Finish" button when the message informs you that setup is successful.
The Sharpdesk installer will start.

9 Begin the installation of Sharpdesk (if "Sharpdesk" was selected in Step 5).

Follow the on-screen instructions.



If the following screen appears, click the "Skip" button or the "Continue" button as appropriate to continue the Sharpdesk installation.

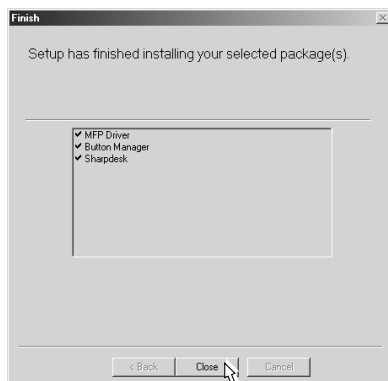


If "Skip" is selected, the Sharpdesk installation will continue without installing Sharpdesk Imaging.
If "Continue" is selected, Sharpdesk Imaging will be installed. If Imaging for Windows is installed on your computer, Sharpdesk Imaging will overwrite Imaging for Windows.

Click the "Finish" button when the message informs you that Setup is complete.

10 When the "Finish" screen appears, click the "Close" button.

When "Now connect the MFP interface cable to the PC." appears, click the "OK" button.



After the installation, a message prompting you to restart your computer may appear. In this case, click the "Yes" button to restart your computer.

11 Make sure that the power of the machine is turned on, and then connect the USB cable. (p. 10)

Windows will detect the machine and the Plug and Play screen will appear.

12 Follow the instructions in the Plug and Play screen that appears in your version of Windows to begin the installation.

This completes the installation of the software.

- If you installed the MFP driver, configure the printer driver settings as explained in "CONFIGURING THE PRINTER DRIVER" (p. 11).
- If you installed Button Manager, set up Button Manager as explained in "SETTING UP BUTTON MANAGER" (p. 12).

INSTALLATION IN WINDOWS 95/98/ME/NT4.0/2000 (PARALLEL CABLE)

- 1** The USB or parallel cable must not be connected to the machine. Make sure that the cable is not connected before proceeding.

If the cable is connected, a Plug and Play window will appear. If this happens, click the "Cancel" button to close the window and disconnect the cable.

Note The cable will be connected in step 16.

- 2** Insert the CD-ROM into your CD-ROM drive.

- 3** Double-click "My Computer" (), and then double-click the CD-ROM icon ().

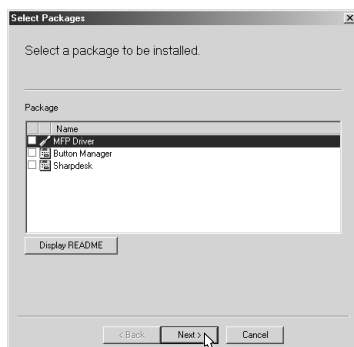
- 4** Double-click the "setup" icon ().

Note If the language selection screen appears after you double click the "setup" icon, select the language you wish to use and click the "Next" button. (Normally the correct language is selected automatically.)

- 5** Select the software packages to be installed and then click the "Next" button.

Software packages with a checkmark (☒) in the list on the screen will be installed.

Click the "Display README" button to show information on packages that are selected.



Note

- In Windows 95/NT 4.0, "Button Manager" does not appear.
- In Windows 98/Me/2000, do not select the "Button Manager" checkbox (Button Manager is not supported when a parallel cable is used).

- 6** Check the packages on the screen, and then click the "Start" button.

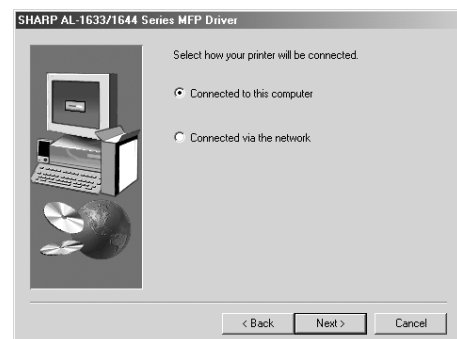
The software packages to be installed will be displayed on the screen. If an incorrect package is displayed, click the "Back" button and select the correct packages.

- 7** Begin installation of the MFP driver (printer driver) (if "MFP driver" was selected in Step 5).

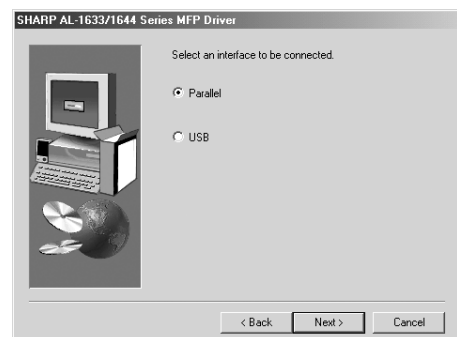
Follow the on-screen instructions.

If you are using Windows 95/NT 4.0, go to step 10.

- 8** When you are asked how the printer is connected, select "Connected to this computer" and click the "Next" button.

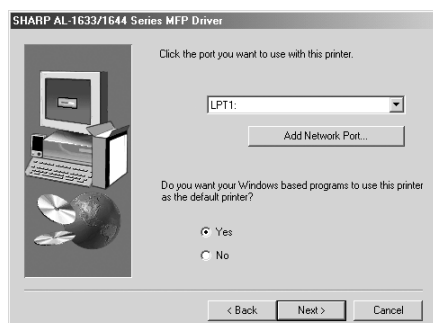


- 9** When the interface selection screen appears, select "Parallel" and click the "Next" button.



10 Select the printer port and click the "Next" button.

Select "LPT1" for the printer port.



If "LPT1" does not appear, another printer or peripheral device is using LPT1. In this case continue the installation, and after the installation is finished, change the port setting so that the machine can use LPT1. This procedure is explained in "Another printer is using the parallel port (when using a parallel cable)" on page 16.

11 When the model selection window appears, select model name of your machine and click the "Next" button.

For the name of the model that you are using, see "DIFFERENCES BETWEEN MODELS" in the Operation Manual.

12 Click the "Yes" button.



13 When "The MFP driver installation is complete." appears, click the "OK" button.

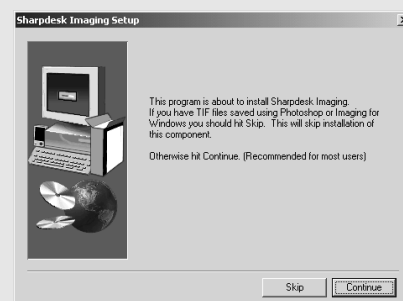
The Sharpdesk installer will start.

14 Begin the installation of Sharpdesk (if "Sharpdesk" was selected in Step 5).

Follow the on-screen instructions.



If the following screen appears, click the "Skip" button or the "Continue" button as appropriate to continue the Sharpdesk installation.



If "Skip" is selected, the Sharpdesk installation will continue without installing Sharpdesk Imaging. If "Continue" is selected, Sharpdesk Imaging will be installed. If Imaging for Windows is installed on your computer, Sharpdesk Imaging will overwrite Imaging for Windows.

Click the "Finish" button when the message informs you that setup is successful.

15 When the "Finish" screen appears, click the "Close" button.

When "Now connect the MFP interface cable to the PC." appears, click the "OK" button.



After the installation, a message prompting you to restart your computer may appear. In this case, click the "Yes" button to restart your computer.

16 Turn off the power of the machine and your computer, and connect the machine to your computer with the parallel cable. (p. 10)

After connecting the machine to your computer, turn on the power of the machine and then start up your computer.

This completes the installation of the software.

- If you installed the MFP driver, configure the printer driver settings as explained in "CONFIGURING THE PRINTER DRIVER" (p. 11).

CONNECTING TO A COMPUTER

Follow the procedure below to connect the machine to your computer.

Interface cables for connecting the machine to your computer are not included with the machine. Please purchase the appropriate cable for your computer.

Interface cable

USB cable

Shielded twisted pair cable, high-speed transmission equivalent (3 m (10 feet) max.)

Parallel cable

IEEE 1284-Shielded type bi-directional parallel interface cable (3 m (10 feet) max.)

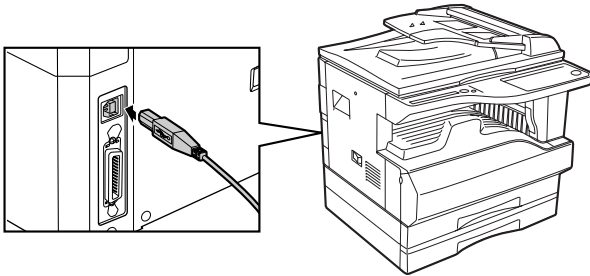
! Caution

- If you intend to use the machine as a scanner, it must be connected to your computer with a USB interface cable. The scanner function cannot be used if the machine is connected with a parallel cable.
- USB is available with a PC/AT compatible computer that was originally equipped with USB and had Windows 98, Windows Me, Windows 2000 Professional, Windows XP Professional or Windows XP Home Edition preinstalled.
- Do not connect the interface cable before installing the MFP driver. The interface cable should be connected during installation of the MFP driver.

CONNECTING A USB CABLE

- 1** Insert the cable into the USB connector on the machine.

- 2** Insert the other end of the cable into the your computer's USB connector.

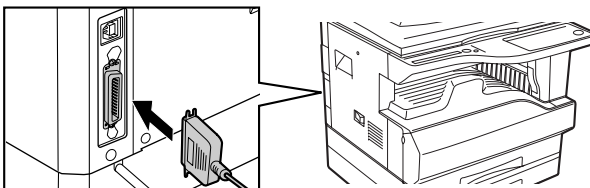


CONNECTING A PARALLEL CABLE

- 1** Ensure that your computer and the machine are turned off.

- 3** Plug the other end of the cable into your computer's parallel connector.

- 2** Plug the cable into the parallel connector on the machine, and fasten with the clasps.



CONFIGURING THE PRINTER DRIVER

After installing the MFP driver (printer driver), you must configure the printer driver settings appropriately for the number of paper trays on the machine and the size of paper loaded in each.

- 1** Click the "start" button, click "Control Panel", click "Printers and Other Hardware", and then click "Printers and Faxes".

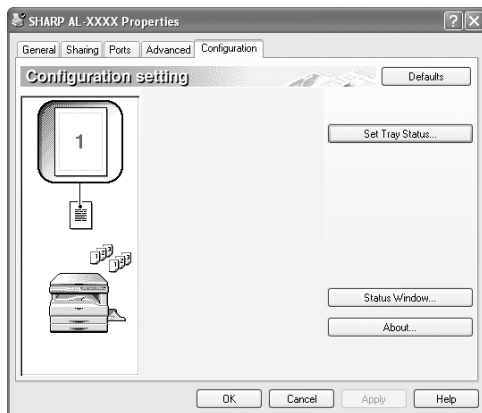
In operating systems other than Windows XP, click the "Start" button, select "Settings", and then click "Printers".

- 2** Click the "SHARP AL-XXXX" printer driver icon and select "Properties" from the "File" menu.

If you are using Windows NT 4.0/2000/XP, go to step 4.

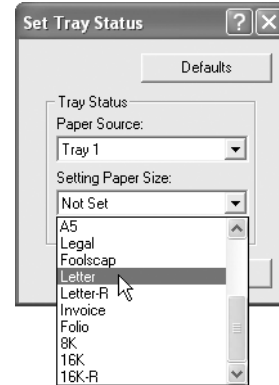
- 3** In Windows 95/98/Me, click the "Setup" tab.

- 4** Click the "Configuration" tab.



- 5** Click the "Set Tray Status" button and select the size of paper that is loaded in each tray.

Select a tray in the "Paper source" menu, and select the size of paper loaded in that tray from the "Setting Paper Size" menu. Repeat for each tray.



Caution

Be sure to configure the above "Set Tray Status" settings, and then when printing specify a tray other than "Auto Select" in "Paper Source" in the "Paper" tab of the printer driver setup screen.

- 6** Click the "OK" button in the "Set Tray Status" window.

- 7** Click the "OK" button in the printer properties window.

SETTING UP BUTTON MANAGER

Button Manager is a software program that works with the scanner driver to enable scanning from the operation panel of the machine.

To scan using the operation panel of the machine, Button Manager must be linked with the scan menu keys on the machine. Follow the steps below to link Button Manager to scanner events.

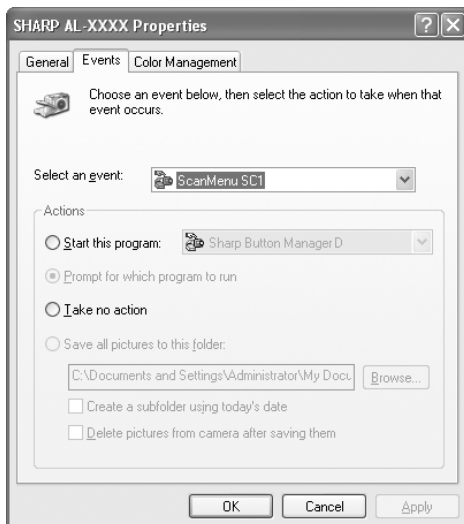
Windows XP

1 Click the "start" button, click "Control Panel", click "Printers and Other Hardware", and then click "Scanners and Cameras".

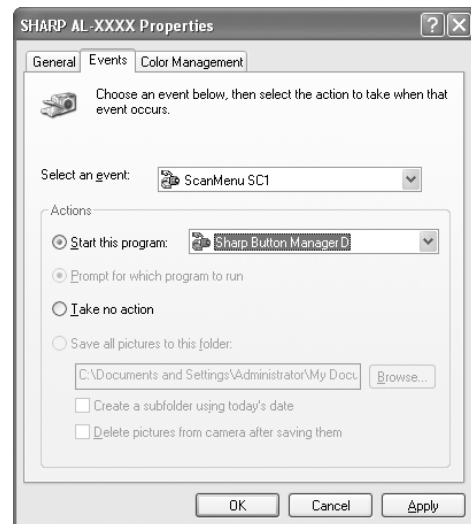
2 Click the "SHARP AL-XXXX" icon and select "Properties" from the "File" menu.

3 In the "Properties" screen, click the "Events" tab.

4 Select "ScanMenu SC1" from the "Select an event" pull-down menu.



5 Select "Start this program" and then select "Sharp Button Manager D" from the pull-down menu.



6 Click the "Apply" button.

7 Repeat Steps 4 through 6 to link Button Manager to "ScanMenu SC2" through "ScanMenu SC6".

Select "ScanMenu SC2" from the "Select an event" pull-down menu. Select "Start this program", select "Sharp Button Manager D" from the pull-down menu, and then click the "Apply" button. Do the same for each ScanMenu through "ScanMenu SC6".

When the settings have been completed, click the "OK" button to close the screen.

Button Manager is now linked to the scan menu keys (1 through 6).

The scan settings for each of scan menu keys 1 through 6 can be changed in the setting window of Button Manager.

For the factory default settings of the scan menu keys, see "USING THE SCANNER MODE" in the Operation Manual. For the procedures for configuring Button Manager settings, see "Button Manager Settings" in the Online Manual.

Windows 98/Me/2000

1 click the "Start" button, select "Settings", and then click "Control Panel".

2 Double-click the "Scanners and Cameras" icon.



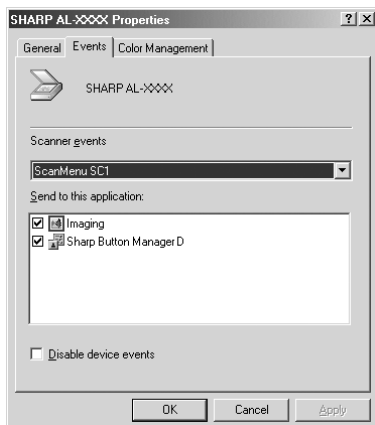
If the "Scanners and Cameras" icon does not appear in Windows Me, click "view all Control Panel options".

3 Select "AL-XXXX", and click the "Properties" button.

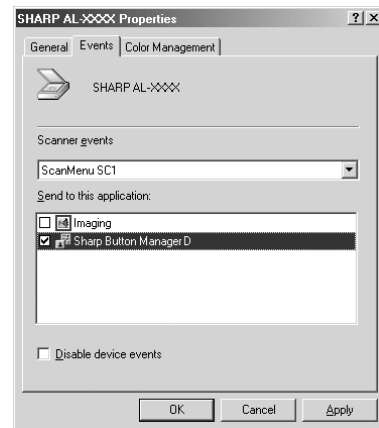
In Windows Me, right click "AL-XXXX" and click "Properties" in the menu that appears.

4 In the "Properties" screen, click the "Events" tab.

5 Select "ScanMenu SC1" from the "Scanner events" pull-down menu.



6 Select "Sharp Button Manager D" in "Send to this application".



If other applications are shown, deselect the checkboxes for the other applications and leave only the Button Manager checkbox selected.

7 Click the "Apply" button.

8 Repeat Steps 5 through 7 to link Button Manager to "ScanMenu SC2" through "ScanMenu SC6".

Select "ScanMenu SC2" from the "Scanner events" pull-down menu. Select "Sharp Button Manager D" in "Send to this application" and click the "Apply" button. Do the same for each ScanMenu through "ScanMenu SC6". When the settings have been completed, click the "OK" button to close the screen.

Button Manager is now linked to the scan menu keys (1 through 6).

The scan settings for each of scan menu keys 1 through 6 can be changed in the setting window of Button Manager.

For the factory default settings of the scan menu keys, see "USING THE SCANNER MODE" in the Operation Manual. For the procedures for configuring Button Manager settings, see "Button Manager Settings" in the Online Manual.

HOW TO USE THE ONLINE MANUAL

The Online Manual provides detailed instructions for operating the machine as a printer or scanner. View the Online Manual when you use the printer and scanner functions after the initial setup is completed.

Contents of the Online Manual

The contents of the Online Manual are as follows.

How to use the Online Manual

Explains how to use the Online Manual.

Print

Provides information on how to print a document.

Printer sharing

Explains how to configure the machine for use as a shared printer.



Scan

Explains how to scan using the scanner driver and how to adjust the settings for the Button Manager.



To view the Online Manual, your computer must have Acrobat Reader 5.0 or later. If you do not have Acrobat Reader, follow the instructions in "Installing Acrobat Reader" to install it.

1 Insert the CD-ROM into your CD-ROM drive.

2 Click the "start" button, click "My Computer" (), and then double-click the CD-ROM icon ().

In Windows 95/98/Me/NT 4.0/2000, double-click "My Computer", and then double-click the CD-ROM icon.





- If you will be viewing the Online Manual repeatedly, you may find it convenient to copy this Online Manual file to your computer.
- The Online Manual can be printed out using Acrobat Reader. SHARP recommends printing out the sections which you refer to regularly.
- Refer to "Help" of Acrobat Reader for more details on how to use Acrobat Reader.

3 Double-click the "Manual" folder, double-click the "English" folder, and then double-click the "AL_1633_1644.pdf" icon.

The Online Manual will appear.

Installing Acrobat Reader

1 Insert the CD-ROM into the CD-ROM drive.

2 Click the "start" button, click "My Computer" (), and then double-click the CD-ROM icon ().

In Windows 95/98/Me/NT 4.0/2000, double-click "My Computer", and then double-click the CD-ROM icon.

3 Double-click the "Acrobat" folder, and then double-click the "ar500enu.exe" icon.

Follow the on-screen instructions to install Acrobat Reader.

TROUBLESHOOTING

If the software does not install correctly, check the following items on your computer.

To remove the software, see "Removing the software" (p. 61) in the Operation Manual.

Troubleshooting information can also be found in the README files for each of the software programs. To view a README file, click the "Display README" button in the "Select Packages" screen. (p.4, 6, 8)

MFP driver cannot be installed (Windows 2000/XP)

If the MFP driver cannot be installed in Windows 2000/XP, follow these steps to check your computer's settings.

1 Click the "start" button and then click "Control Panel".

In Windows 2000, click the "Start" button, select "Settings", and then click "Control Panel".

2 Click "Performance and Maintenance", and then click "System".

In Windows 2000, double-click the "System" icon.

3 Click the "Hardware" tab and then click the "Driver Signing" button.

4 Check "What action do you want Windows to take?" ("File signature verification" in Windows 2000).



If the option "Block" has been selected, it will not be possible to install the MFP driver. Select the option "Warn" and then install the MFP driver as explained in "INSTALLING THE SOFTWARE".

Plug and play screen does not appear (when using a USB cable)

If the Plug and Play screen does not appear after you connect the machine to your computer with a USB cable and turn on the machine, follow the steps below to verify that the USB port is available.

1 Click the "start" button, click "Control Panel", and then click "Performance and Maintenance".

In Windows 98/Me/2000, click the "Start" button, select "Settings", and then click "Control Panel".

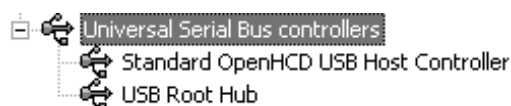
2 Click "System", click the "Hardware" tab, and click the "Device Manager" button.

"Universal Serial Bus controllers" will appear in the list of devices.



- In Windows 98/Me, double-click the "System" icon and click the "Device Manager" tab.
- In Windows 2000, double-click the "System" icon, click the "Hardware" tab, and click the "Device Manager" button.
- If the "System" icon does not appear in Windows Me, click "view all Control Panel options".

3 Click the icon beside "Universal Serial Bus controllers".



Two items should appear: your controller chipset type and Root Hub. If these items appear, you can use the USB port. If the "Universal Serial Bus controllers" shows a yellow exclamation point or does not appear, you must check your computer manual for USB troubleshooting or contact your computer manufacturer.

4 Once you have verified that the USB port is enabled, install the software as explained in "INSTALLING THE SOFTWARE".

The MFP driver cannot be correctly installed by Plug and Play (Windows 2000/XP)

In Windows 2000/XP, if the MFP driver cannot be correctly installed by Plug and Play (for example, Plug and Play takes place without copying the required files for the MFP driver installation), follow these steps to remove unneeded devices and then install the MFP driver as explained in "INSTALLING THE SOFTWARE" (p. 4).

1 Click the "start" button, click "Control Panel", and then click "Performance and Maintenance".

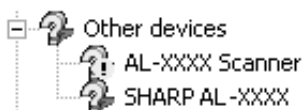
In Windows 2000, click the "Start" button, select "Settings", and then click "Control Panel".

2 Click "System", click the "Hardware" tab, and click the "Device Manager" button.



In Windows 2000, double-click the "System" icon, click the "Hardware" tab, and click the "Device Manager" button.

3 Click the icon beside "Other devices".



If "AL-XXXX" and "SHARP AL-XXXX" appear, select and delete both of these items.



If "Other devices" does not appear, close the "Device Manager" window.

4 Install the software as explained in "INSTALLING THE SOFTWARE".

Another printer is using the parallel port (when using a parallel cable)

If another printer is using the parallel port and printing is not possible using the machine, follow the steps below to change the port setting of the other printer driver, and make sure that the port of the printer driver for the machine is set to LPT1.

1 Click the "start" button, click "Control Panel", click "Printers and Other Hardware", and then click "Printers and Faxes".

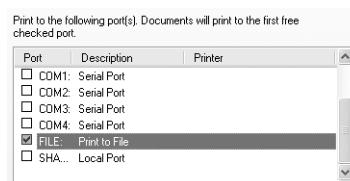
In Windows 95/98/Me/NT 4.0/2000, click the "Start" button, select "Settings", and then click "Printers".

2 Click the icon of the printer driver for which you wish to change the port setting, and select "Properties" from the "File" menu.

3 Click the "Ports" tab.

In Windows 95/98/Me, click the "Details" tab.

4 Select "FILE:" in the "Print to the following port" list box, and click the "OK" button.

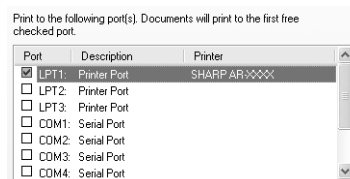


5 Click the "SHARP AL-XXXX" printer driver icon and select "Properties" from the "File" menu.

6 Click the "Ports" tab.

In Windows 95/98/Me, click the "Details" tab.

7 Select "LPT1" in the "Print to the following port" list box, and click the "OK" button.



In the event that you need to use the other printer, repeat the above steps to set the port of the machine to "FILE:", and change the port setting of the other printer back to "LPT1".

SHARP®
SHARP CORPORATION