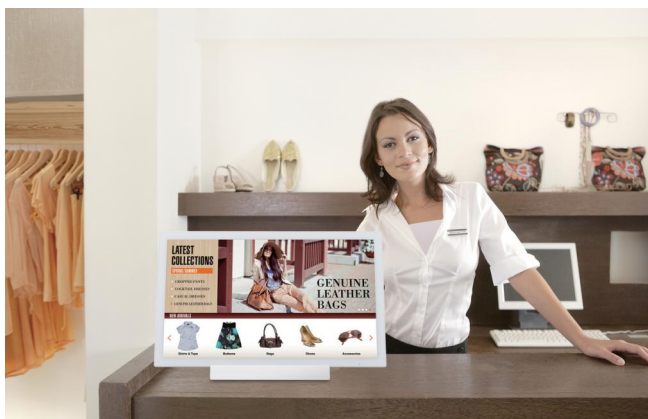


This is Why

- ▶ 24"-CLASS (23,6 INCH [60CM] SIZE) TOUCH DISPLAY
- ▶ 10-POINT CAPACITIVE TOUCH, COMPATIBLE WITH WINDOWS 8.1
- ▶ BUNDLED TOUCH PEN WITH 2 MM TIP
- ▶ CHOICE OF INSTALLATION MODE: PORTRAIT AND LANDSCAPE
- ▶ 1920 X 1080 PIXEL RESOLUTION
- ▶ CONTRAST 1.000:1
- ▶ TFT - LCD



Sharp's new 24" class TFT-LCD monitor with 10-point multi-touch capability. Boasting high resolution and high responsiveness - it also supports handwriting via a dedicated fine-tipped touch pen. this is one monitor that adds fresh appeal to indoor digital signage applications.

DISPLAY MODULE DATA

- ▶ Panel Technology: **TFT LCD**
- ▶ Native Resolution (Pixels): **1920 X 1080**
- ▶ Diagonal Size (inches / cm): **23.6/60**
- ▶ Aspect Ratio: **16:9**
- ▶ Backlight Technology: **LED, edge lit**
- ▶ Brightness (cd/m2): **250**
- ▶ Contrast Ratio: **1000: 1**
- ▶ Display Colours: **16.7 M**
- ▶ Response Time (grey to grey avg) ms: **14**
- ▶ Viewing Angle (H/V)0 CR >10: **178 X 178**

TOUCH INTERFACE SPECIFICATION

- ▶ Technology: **Capacitive**
- ▶ Number of Touch Points: **10**
- ▶ Number of Simultaneous Users: **1**
- ▶ Palm Cancellation: ✓
- ▶ Screen Hardness (H): **7**
- ▶ Operating System Compatibility: **Windows 8.1, Windows 8, Windows 7, Windows Vista,**

SAFETY AND ENVIRONMENT (EUROPE)

- ▶ Energy Star: ✓
- ▶ CE, CB Report: ✓
- ▶ Mercury Content (mg): **0**

INSTALLATION

- ▶ Landscape: ✓
- ▶ Portrait: ✓
- ▶ Horizontal: ✓
- ▶ Mounting (VESA/Number of Points/Pitch mm): **VESA/4/100mm x 100mm**

CONNECTIVITY (AUDIO/VIDEO) OUTPUT

- ▶ Audio/Headphone 3.5mm Jack: **1**

ACCESSORIES

- ▶ Stylus: **STD**
- ▶ Tabletop Stand: **STD**

KEY SPECIFICATIONS

- ▶ Built in Speakers (W): **1W + 1W**
- ▶ Computer Input - Plug and Play: ✓
- ▶ Power Management: ✓
- ▶ Cabinet Colour: **White**
- ▶ Fanless: ✓

POWER SUPPLY AND OPERATING ENVIRONMENT

- ▶ Operating Voltage(ACV) / Frequency(Hz): **100-240/50-60Hz**
- ▶ Power Consumption (W) (Operating MAX): **48**

WEIGHTS AND MEASURES

- ▶ Bezel Size (L/R) mm: **22/22**
- ▶ Bezel Size (U/L) mm: **22/22**
- ▶ Product Dimensions (W/H/D) mm: **566.4 x 338.3 x 28.7**
- ▶ Product Weight Without Stand (Kg): **4.8**

CONNECTIVITY (AUDIO/VIDEO) INPUT

- ▶ HDMI: **1**
- ▶ DisplayPort: **1**

CONNECTIVITY (CONTROL/SERIAL DATA)

- ▶ USB: **1**

www.sharp.co.uk

SHARP

SHARP BUSINESS SYSTEMS UK PLC.
4 FURZEGROUND WAY
STOCKLEY PARK
UXBRIDGE, MIDDLESEX UB11 1EZ. TEL. 0208 734 2000