

IV. Using in NetWare Environment

This section explains how to configure Print Server Card in a NetWare5/4.x and 3.x environment

IV. Using in NetWare Environment	4-1
Print with NetWare	4-2
About Print Server Mode	4-2
About Remote Printer Mode	4-3
Print in NetWare5/4.x Environment	4-4
Set Up for NDS Environment	4-4
Set Up for Bindery Environment.....	4-16
Print Via File Server	4-22
Print in NetWare3.x Environment	4-23
Set Up File Server and Print Server Card	4-23
Print Via File Server	4-29

Print Server Card Users Manual

Print with NetWare

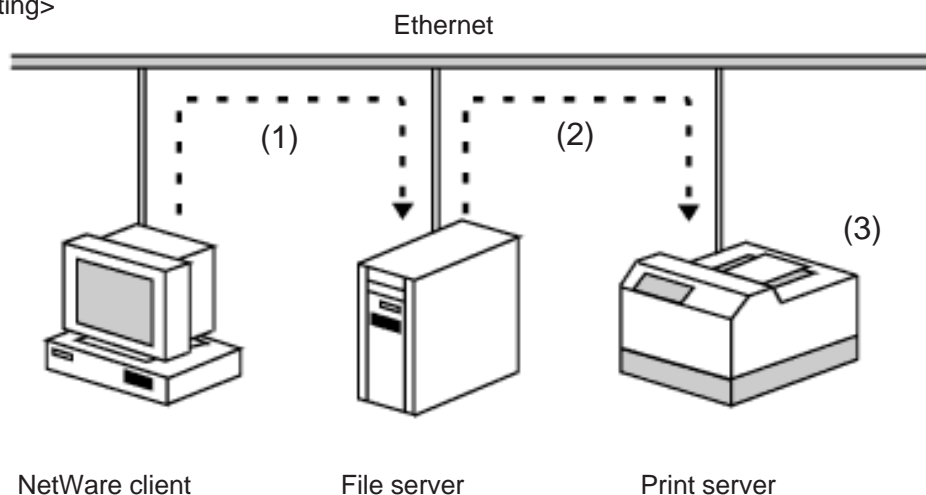
By connecting Print Server Card to the network, it allows you to print using the NetWare environment. Print Server Card supports both print server and remote printer modes. It is possible to setup the file server by using PCONSOLE and NICManager. Novell Client Software must be installed on the workstation prior to setting up Print Server Card using NICManager. Refer to "Chapter VII Manage NetWare Object" for details on how to setup using NICManager.

About Print Server Mode

When Print Server Card is operating in print server mode, other print servers (on file server or other computer used as print server) are not required. Printing will be done in the way described in the illustration.

1. A print job will be spooled on a file server from a NetWare client.
2. Print Server Card receives the print job directly from the file server.
3. The print job will be printed.

<Process of printing>



Print Server Card Users Manual

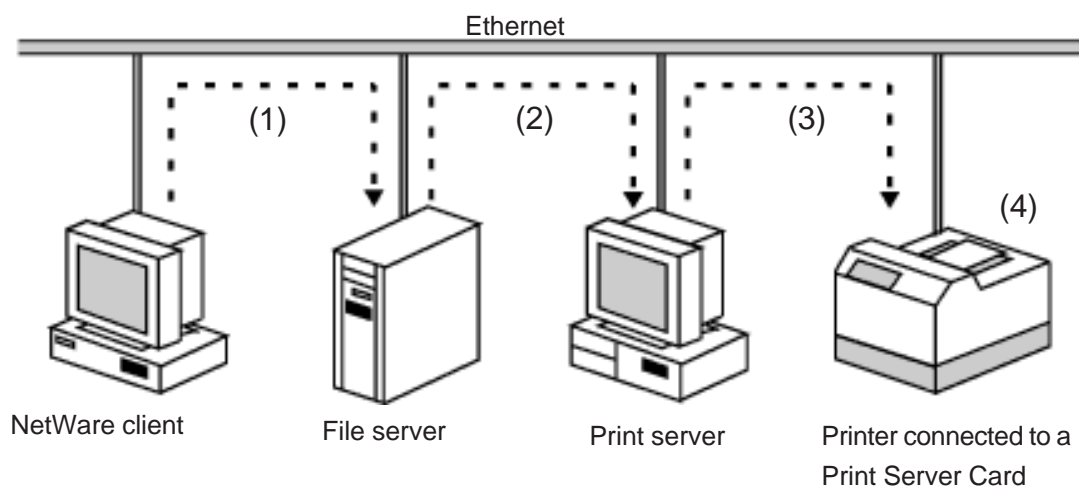
About Remote Printer Mode

When Print Server Card is operating in remote printer mode other print servers (on file server or other computer used as print server) are required. This is the printing method which uses PSERVER.NLM or PSERVER.EXE. Printing will be done in the way described in the illustration.

1. A print job will be spooled on a file server from a NetWare client.
2. The print server (on a file server or other computer used as a print server) receives the print job from the file server.
3. The print server forwards the print job to the printer attached to Print Server Card.
4. The print job will be printed.

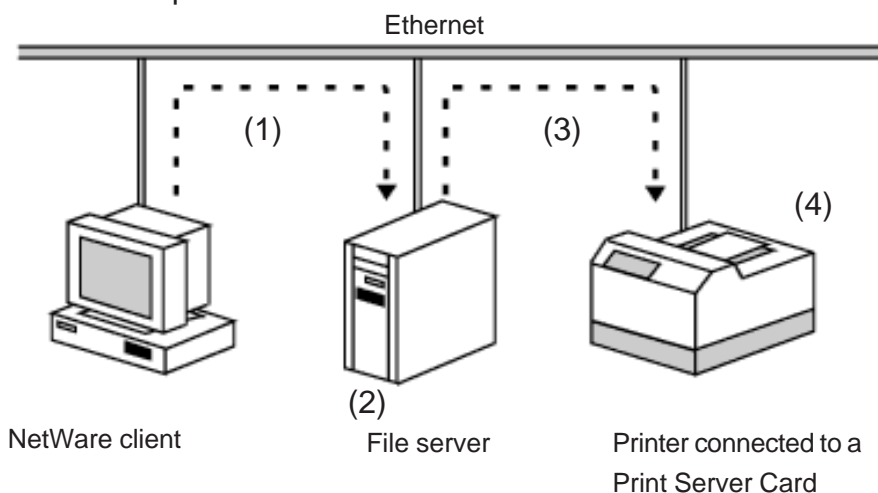
<PSERVER.EXE>

A computer works as a print server.



<PSERVER.NLM>

File server works both as print server and file server.



Print Server Card Users Manual

Print in NetWare5/4.x Environment

This section explains how to set up Print Server Card in NetWare5/4.x environment. The explanation below assumes that you have already created a Novell NetWare5 file server and installed Novell Client in your computer.



TIP

- * You cannot add a queue with utility using Microsoft Network client software.
- * The explanation is about NetWare5. Menu dialogue may vary depending on the version.
- * Use **NICManager** for setup. Install or start from **Standard Setup - Print Server Card User Software**.

Set Up for NDS Environment

This section explains how to set Print Server Card in NetWare5 environment using NDS mode.

The following are the configuration descriptions. The parameters below are used as examples.

* NetWare5 Server

File server name	:LEO
Tree name	:AQUARIUS
Context name	:Scorpio

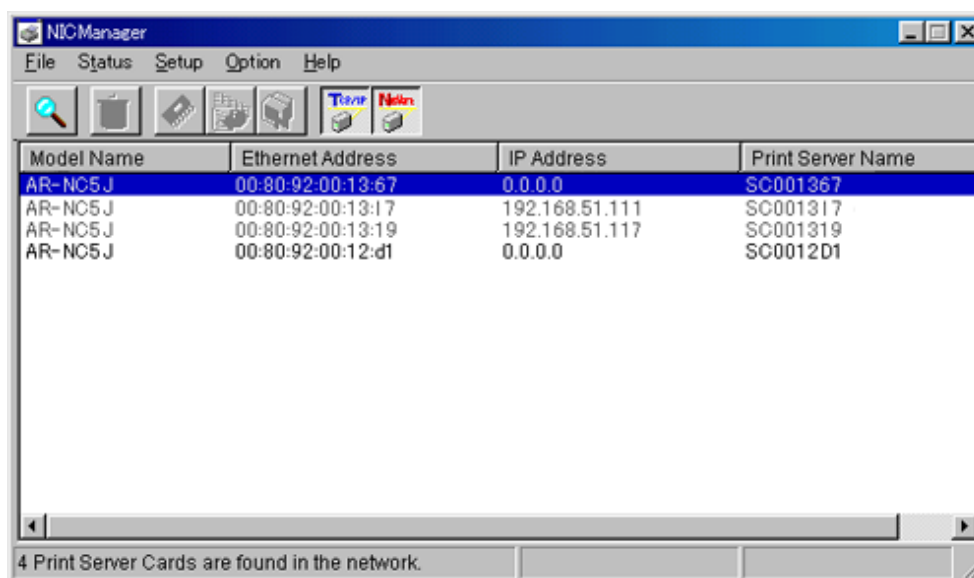
* Print Server Card

Print server name	:PSC-PS
Printer port name	:PSC-LPT
Printer queue name	:PSC-Q

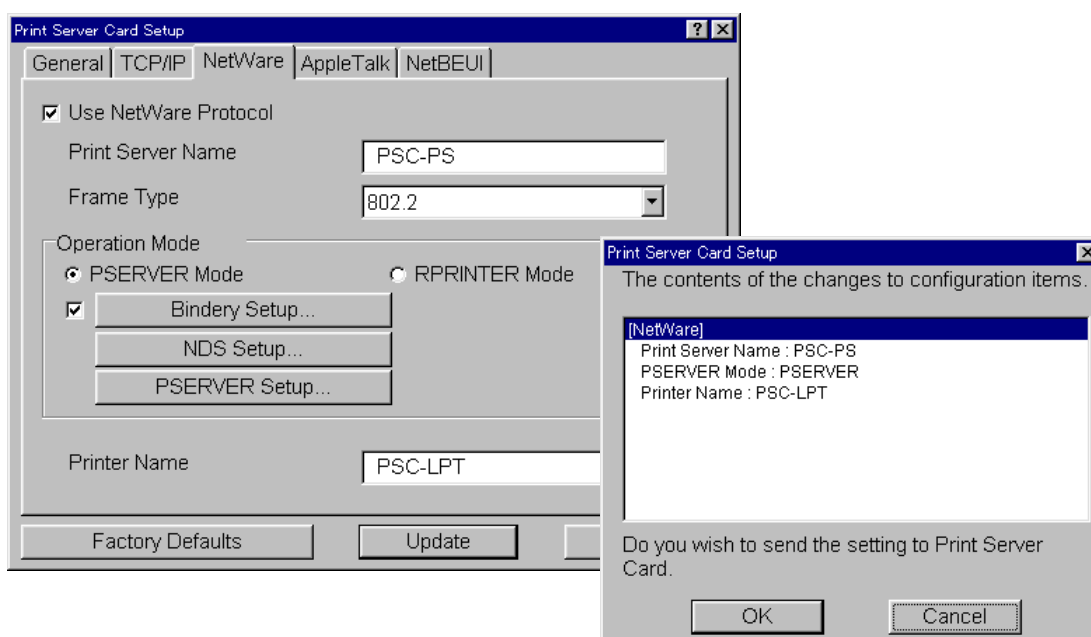
Print Server Card Users Manual

<Using Print Server Card in Print Server Mode>

1. Open NICManager on Print Server Card User Software CD. The list of Print Server Cards existing on the network will be shown. Select the Print Server Card you want to setup. The NIC that has not been configured will be highlighted. Select **Setup** and click **Print Server Card Setup**.



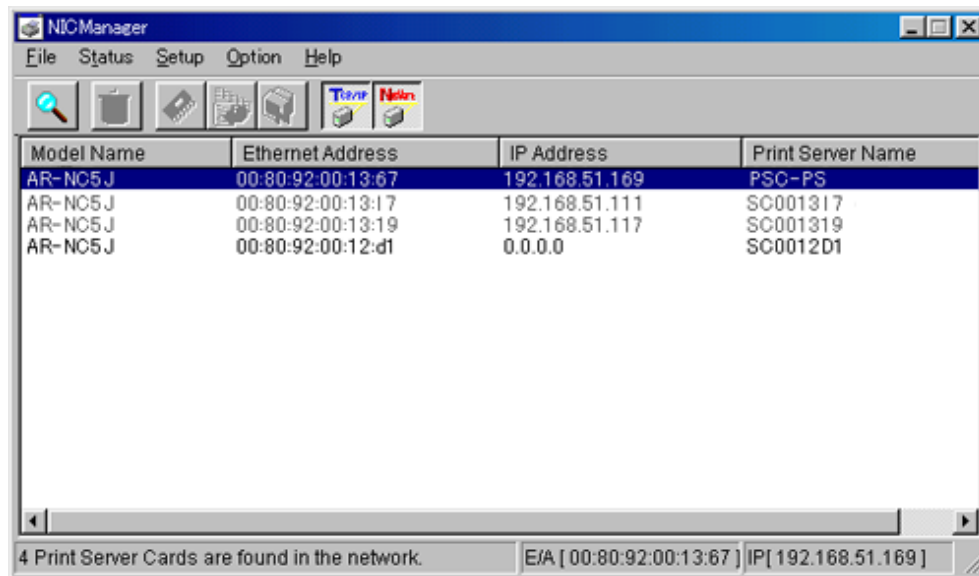
2. In Print Server Card Setup window, select **NetWare**. Change the print server name, printer name to your preference. After changing, click **Update**.



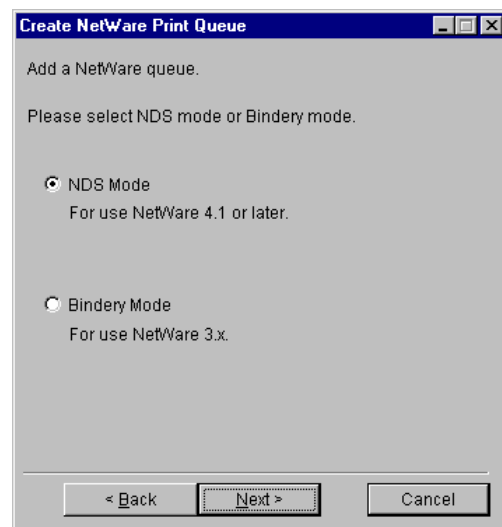
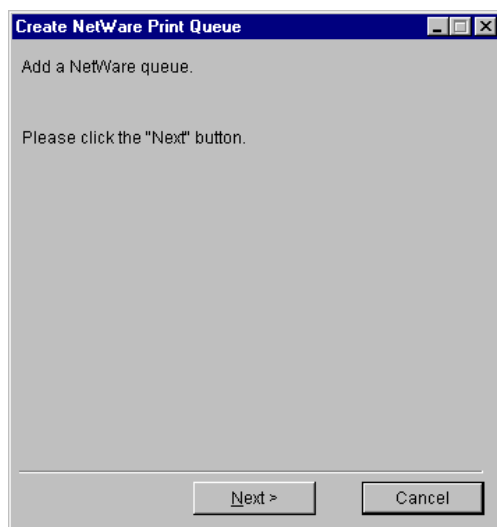
* To change packet type, password, JOB polling time, refer to "Standard Setup" in "VII Print Server Card User Software" for details on set up using NICManager.

Print Server Card Users Manual

3. After changing the name, select Print Server Card you want to configure from the list. Click **Setup** and select **Create NetWare Queue**.

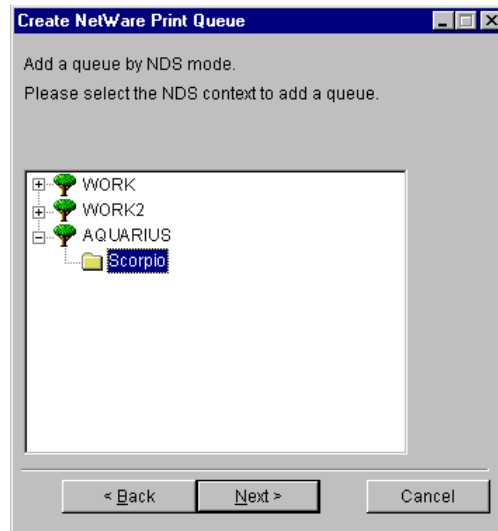


4. Follow the instruction. When asked to select NDS Mode or Bindery Mode, select NDS Mode and click **Next**.

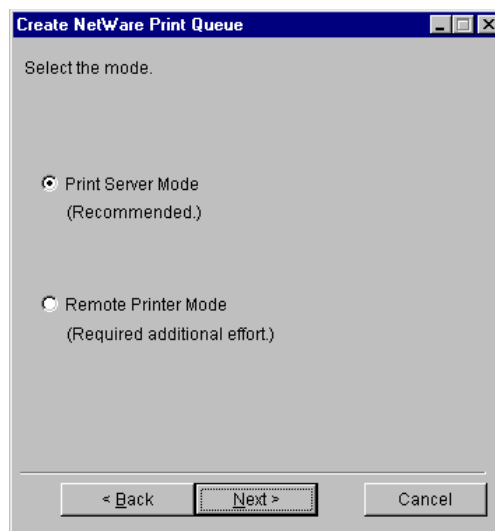


Print Server Card Users Manual

5. After selecting NDS Mode, you will see the screen below. Select the context name from the tree of the server that you want to set up Print Server Card. In this case, we select context Scorpio from the tree Aquarius. Click **Next**.

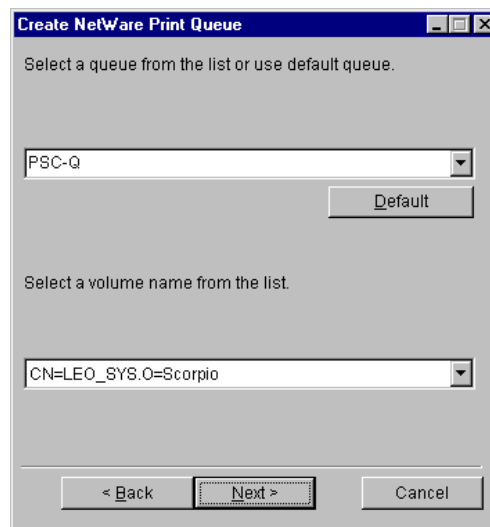


6. Select the operation mode. Select Print Server Mode and click **Next**.

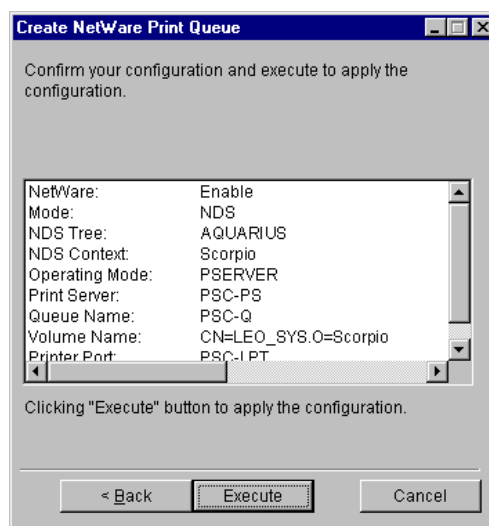


Print Server Card Users Manual

7. Create the queue that the print server will service. By default, a queue will be indicated. You can change the queue name to your choice.

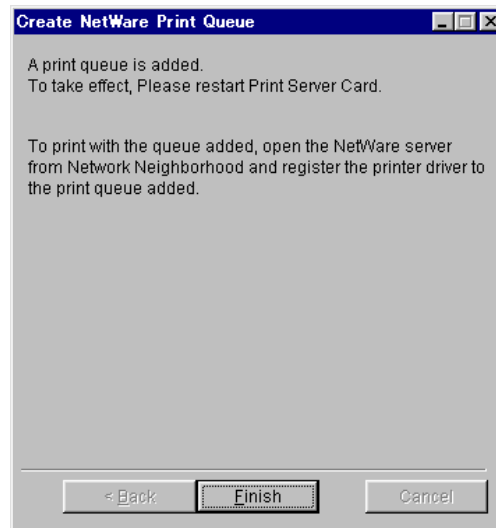


8. You will see the list of what you have set up. If there are no changes, click **Execute**.

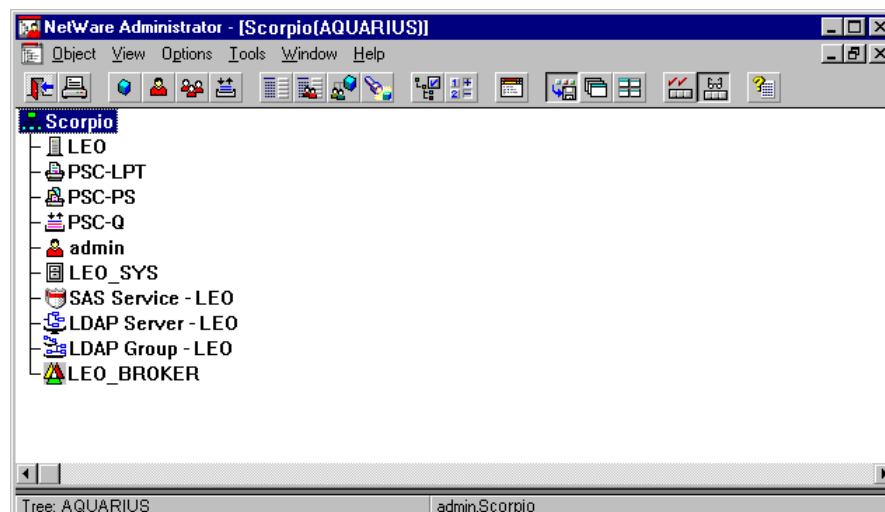


Print Server Card Users Manual

9. Set up is completed. Click **Finish**. Be sure to reset Print Server Card before printing.



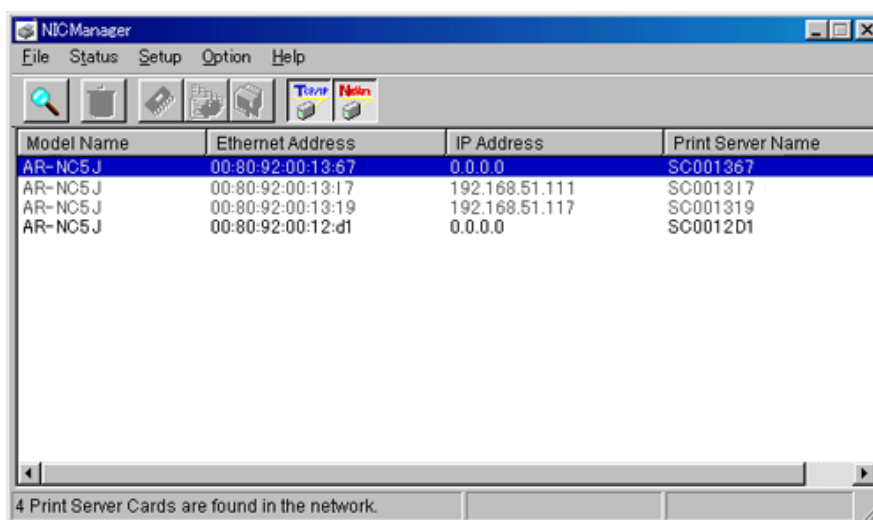
10. After set up, you will see the Print Server Name : PCS-PS, Printer Name: PSC-LPT, Print Queue Name: PSC-Q, in NDS tree as below.



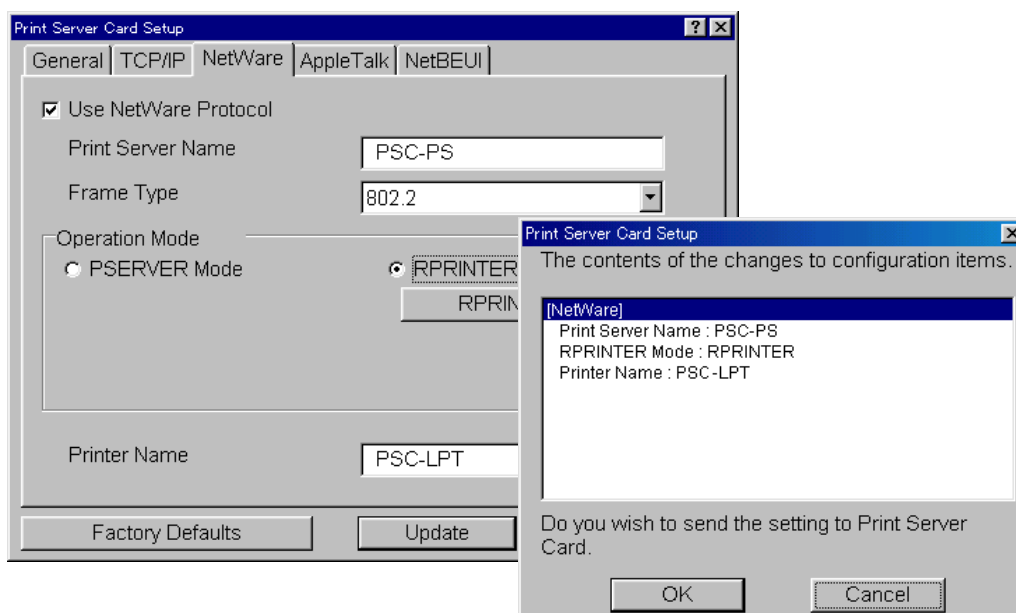
Print Server Card Users Manual

<Using Print Server Card in Remote Printer Mode>

1. Open NICManager on Print Server Card User Software CD. The list of Print Server Cards existing on the network will be shown. The NIC that has not been configured will be highlighted. Select the Print Server Card you want to set up. Select **Setup** and click **Print Server Card Setup**.



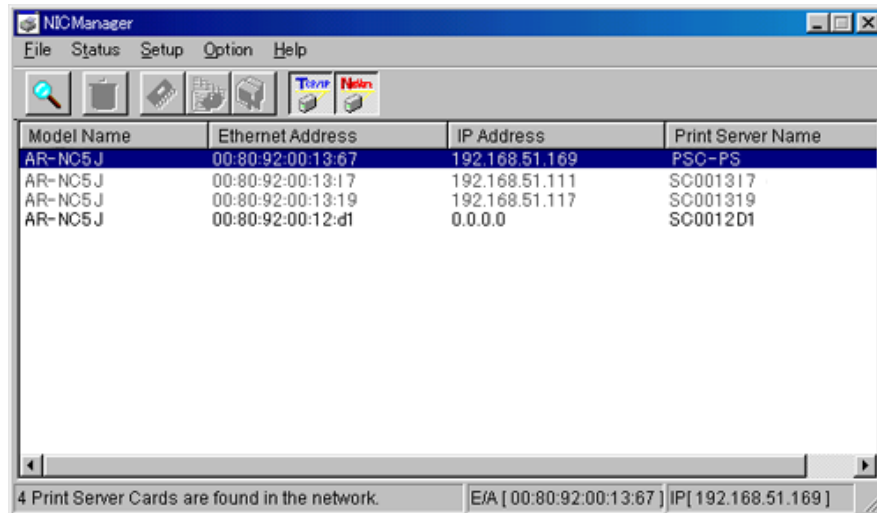
2. In Print Server Card Setup window, select **NetWare**. Change the print server name and printer name to your preference. After changing, click **Update**.



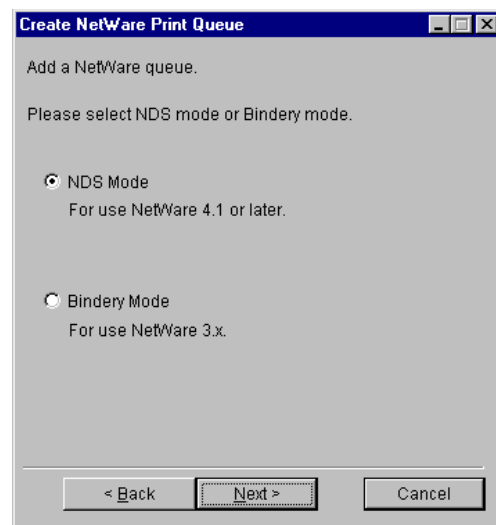
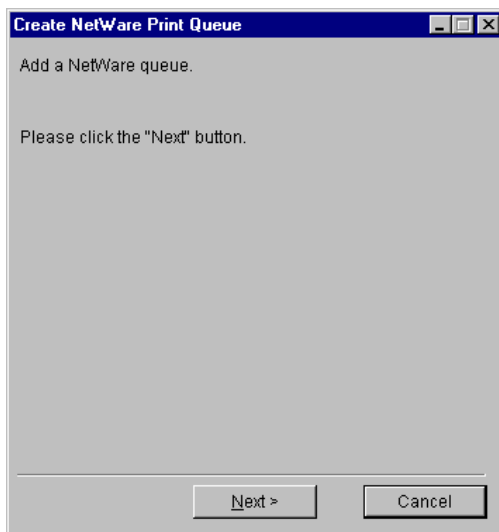
* To change packet type, JOB time out, refer to "Standard Setup" of "VII Print Server Card User Software".

Print Server Card Users Manual

- After changing the name, select Print Server Card you want to configure from the list. Click **Setup** and select **Create NetWare Queue**.

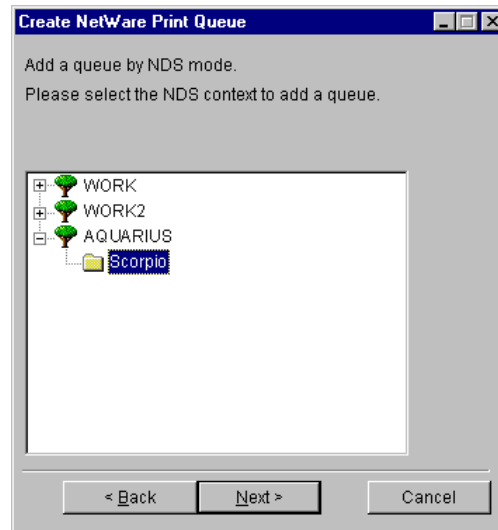


- Follow the instruction. When asked to select NDS Mode or Bindery Mode, select NDS Mode and click **Next**.

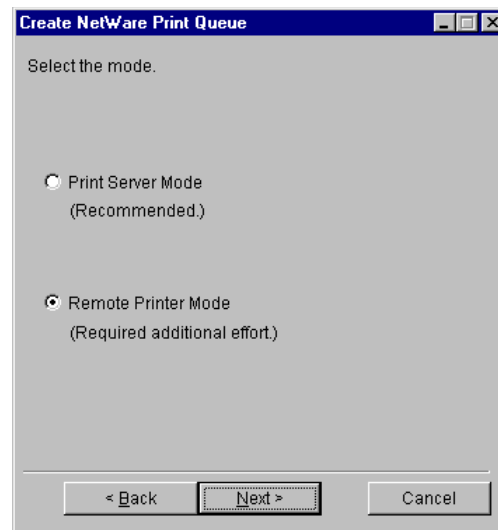


Print Server Card Users Manual

5. After selecting NDS Mode, you will see the screen below. Select the context name from the tree of the server that you want to set up Print Server Card. In this case, we select context Scorpio from the tree AQUARIUS. Click **Next**.



6. Select the printing mode. Select Remote Printer Mode and click **Next**.

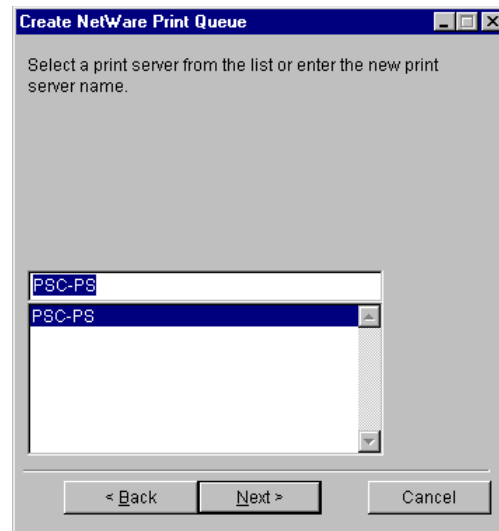


Print Server Card Users Manual

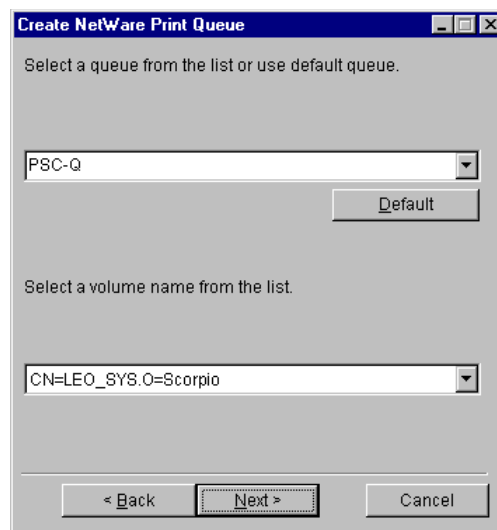
7. Enter the print server that will be used for printing. If the print server you intend to use is already in the list, select from the list. If you want to create a new print server, type in the name.



- * The name of print server does not need to be the same as the print server name of Print Server Card.

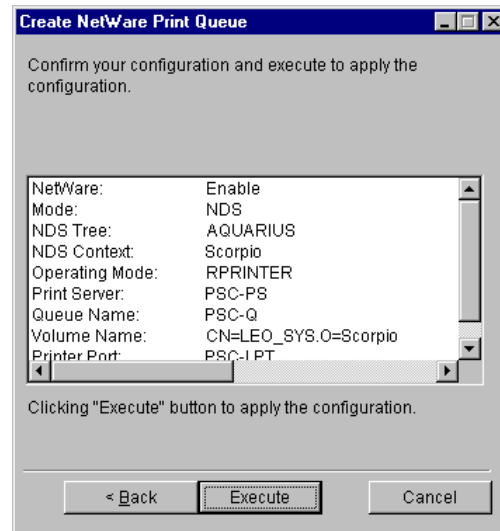


8. Create the queue that the print server will service. By default, a queue will be indicated. You can change the queue name to your choice.

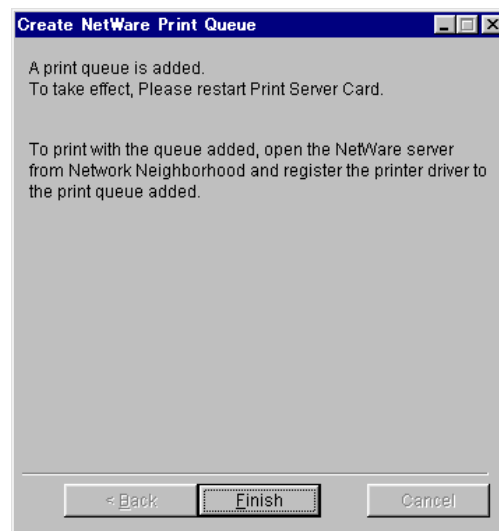


Print Server Card Users Manual

9. You will see the list of what you have set up. If there are no changes, click **Execute**.

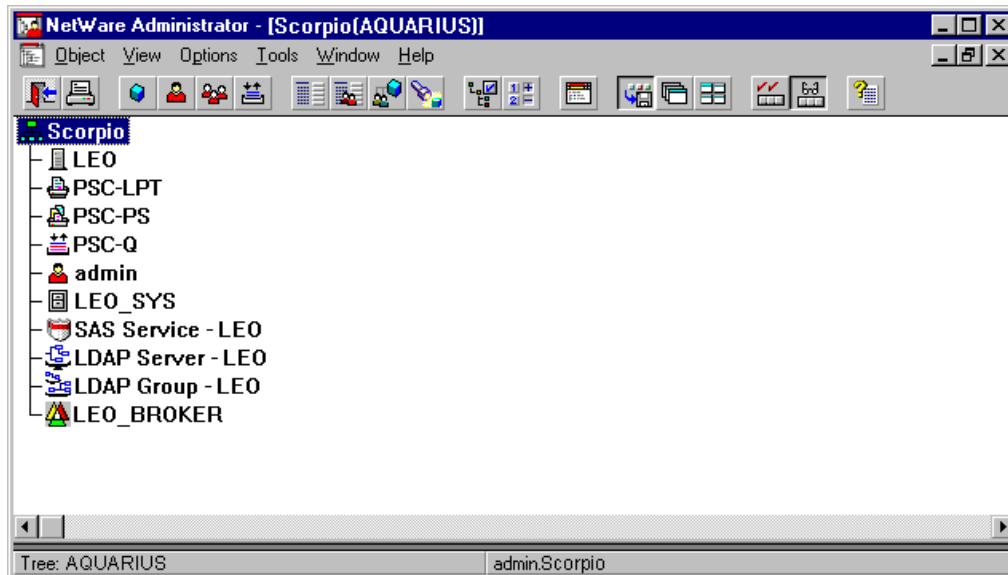


10. Set up is completed. Click **Finish**. Be sure to load PSERVER on the NetWare server and restart Print Server Card before printing.



Print Server Card Users Manual

11. After set up, you will see Printer Name: PSC-LPT, Print Queue Name: PSC-Q in Novell Client as below.



Print Server Card Users Manual

Set Up for Bindery Environment

This section explains how to set Print Server Card in NetWare5 environment using Bindery mode.

The following are the configuration descriptions. The parameters below are used as examples.

* NetWare5 Server

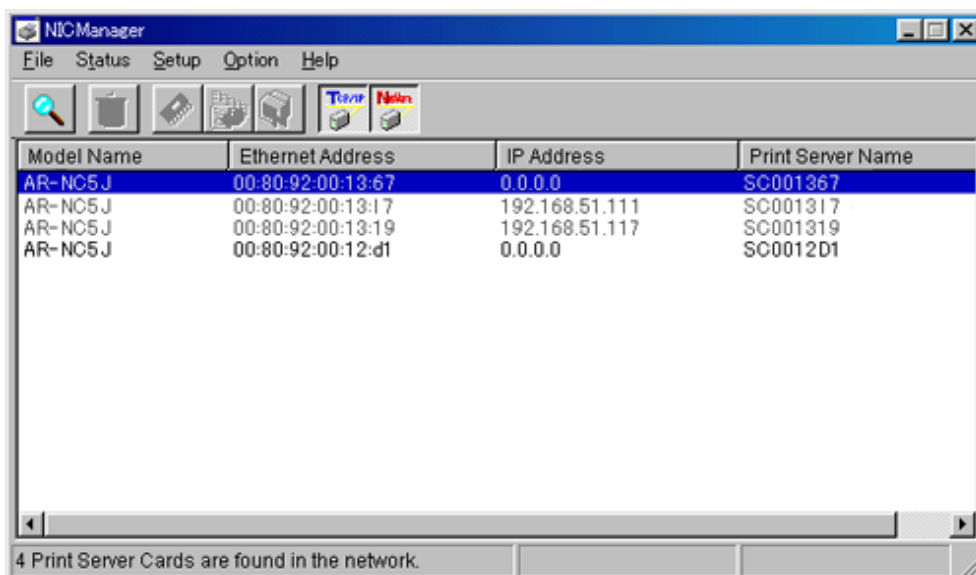
File server name	:LEO
------------------	------

* Print Server Card

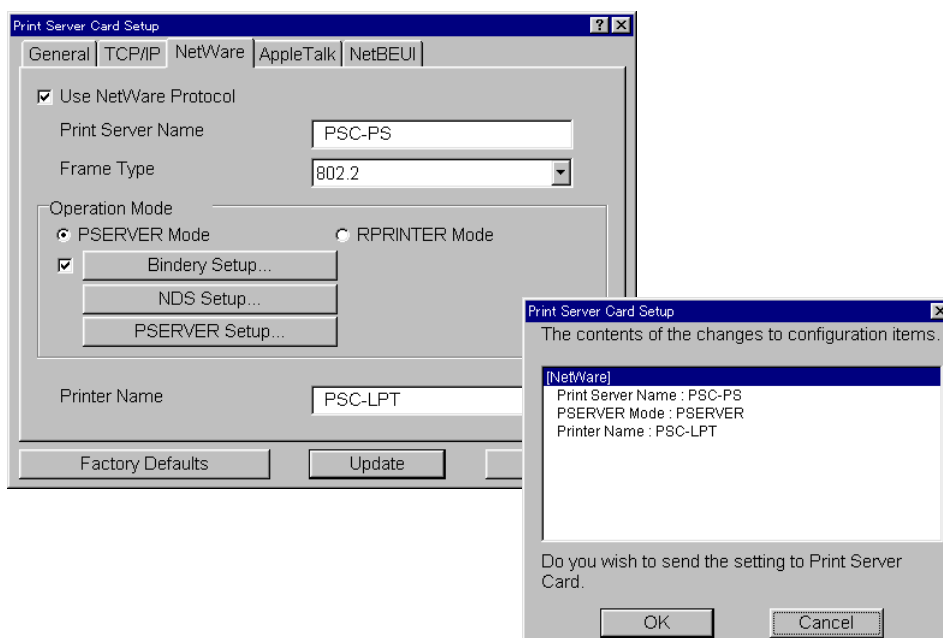
Print server name	:PSC-PS
Printer port name	:PSC-LPT
Printer queue name	:PSC-Q

Print Server Card Users Manual

1. Open NICManager of Print Server Card Tools. The list of Print Server Card existing in the network will be shown. The NIC which has not been set is high lighted. Select the Print Server Card you want to set up. Select **Setup** and click **Print Server Card Setup**.



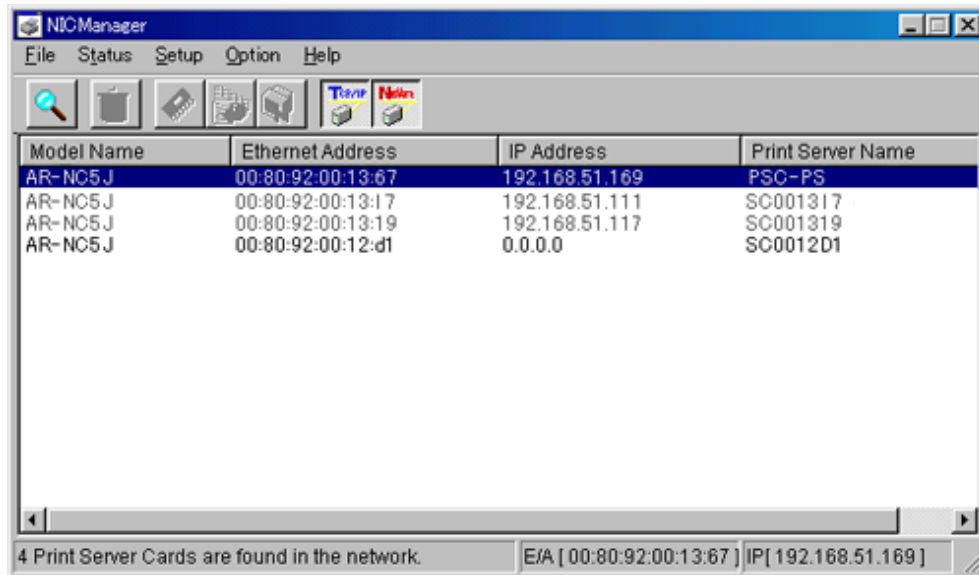
2. In Print Server Card Setup window, select NetWare. Change the print server name, printer name of your preference. After changing, click **Update**.



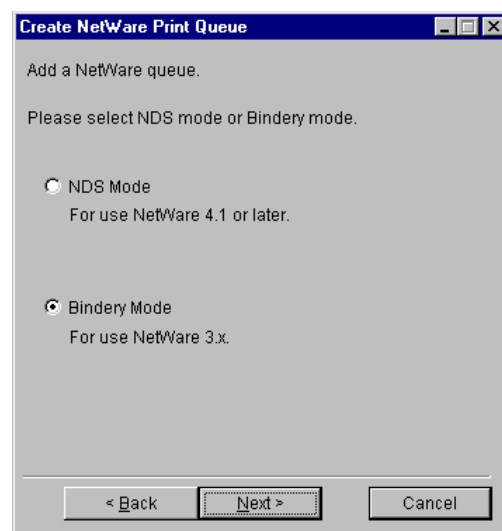
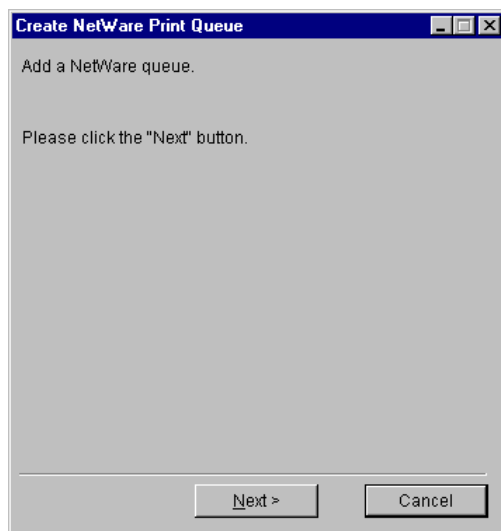
* To change packet type, password, JOB polling time, refer to "Standard Setup" of "VII Print Server Card User Software".

Print Server Card Users Manual

3. After changing the name, select Print Server Card you want to configure from the list. Click **Setup** and select **Create NetWare Queue**.

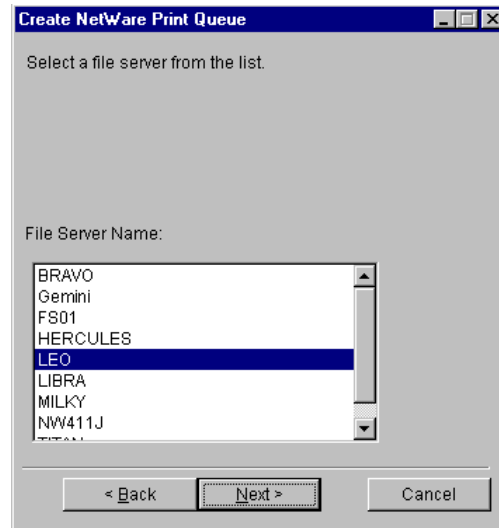


4. Follow the instruction. When asked to select NDS Mode or Bindery Mode, select Bindery Mode and click **Next**.



Print Server Card Users Manual

5. After selecting Bindery Mode, you will see the screen below. Select the file server that you want to set up Print Server Card. In this case, we select LEO. Then click **Next**.

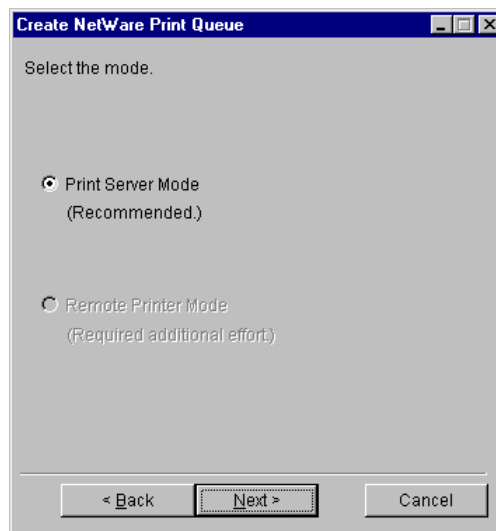


6. Click **Next**.



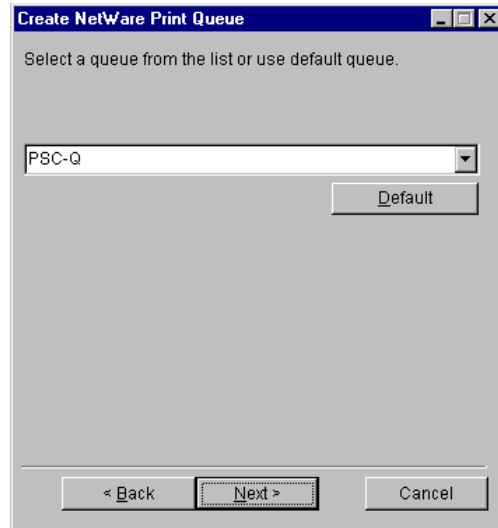
TIP

- * In NetWare 4/5, Bindery mode, you can not select Remote Printer Mode in Bindery mode.

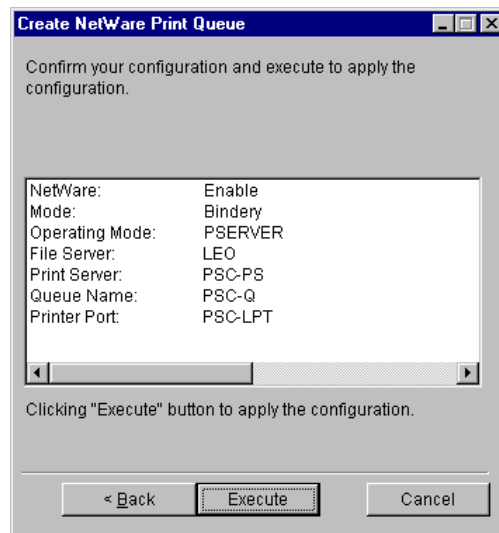


Print Server Card Users Manual

7. Create the queue that the print server will service. By default, a queue will be indicated. You can change the queue name to your choice.

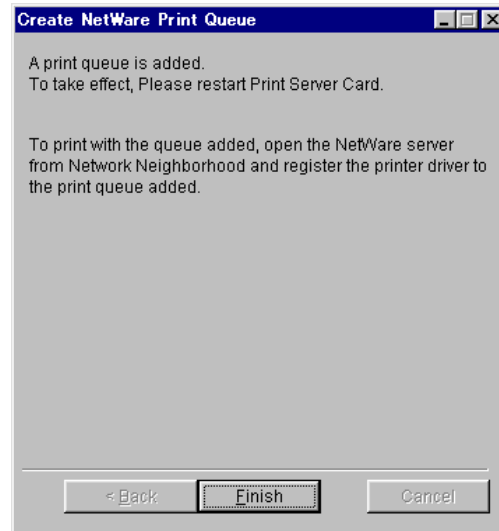


8. You will see the list of what you have set up. If there are no changes, click **Execute**.



Print Server Card Users Manual

9. Set up is completed. Click **Finish**. Be sure to reset Print Server Card before printing.



Print Server Card Users Manual

Print Via File Server

This section explains how to configure to print from Windows 95/98/Me in NetWare5 and NetWare4.x environment.

<Installing Printer Driver>

1. Go to **Start - Setting** and open **Printers**. Select **Add Printer**.
2. **Add Printer Wizard** will load. Follow the instructions and select **Network Printer**.
3. When selecting network path or the queue name, click **Browse**. A list of server residing on the network will appear. Select the server, tree name, and context name that you have just created. Click the print queue you want to use.
4. Follow the instruction. Try test print. If printing is correct, set up is done.

<Using Print Driver which is Already Created>

1. Select the printer driver you want to use. Open properties.
2. Select **Details - Add Port - Network** and click on **Browse**. A list of server residing on the network will appear. Select the server, tree name, and context name where you have just created the print queue.
3. Follow the instruction. Try test print. If printing is correct, set up is done.

Print Server Card Users Manual

Print in NetWare3.x Environment

This section explains how to set up Print Server Card in NetWare3.x environment. The explanation below assumes that you have already created a NetWare 3.x server.

Set Up File Server and Print Server Card

This section explains how to set up Print Server Card in NetWare3.x environment.

The following are the configuration descriptions. The parameters below are used as examples.

* NetWare3.x Server

File server name :PLUTO

* Print Server Card

Print server name	:PSC-NIC	(Print server mode)
	:PSERVER1	(Remote printer mode)
Printer port name	:PSC-PRN	
Printer queue name	:PSC-Q	



TIP

* In Remote printer mode, there are no need to add *PSEVER1* if it already exists.



NOTE

* You can also set up by NICManager, if Novell Client software is installed.

Print Server Card Users Manual

1. Login to the file server (PLUTO) from a client with supervisor rights. If you have a password, type in password after log in.

```
F:\>login PLUTO/supervisor
```

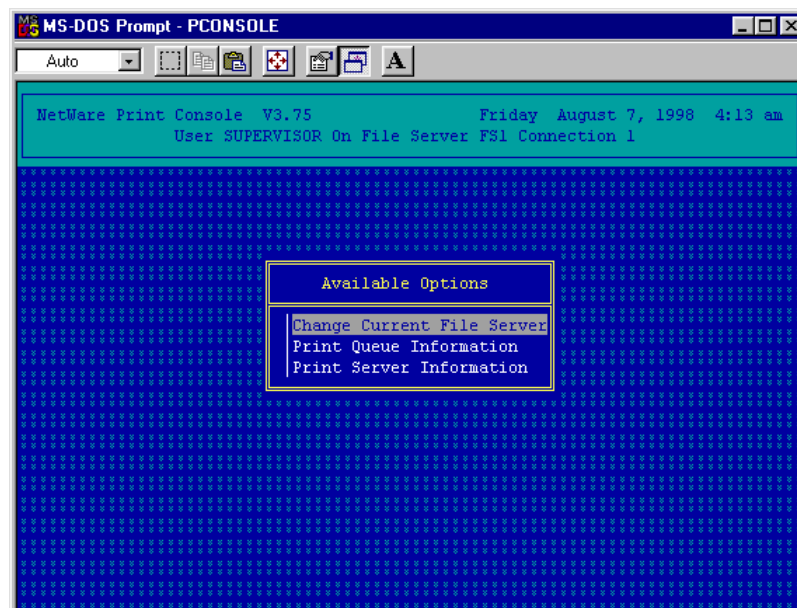


- * Be sure to log in to file server that you are going to set as *File Server Name* to Print Server Card.

2. Start PCONSOLE.

```
F:\>pconsole
```

Available Options window will be displayed.

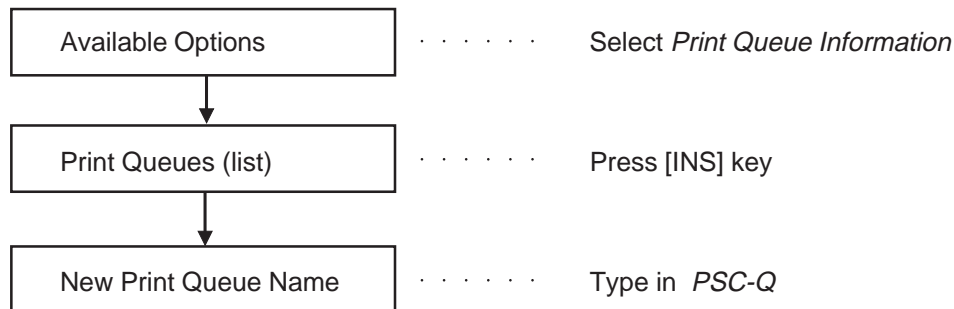


Print Server Card Users Manual

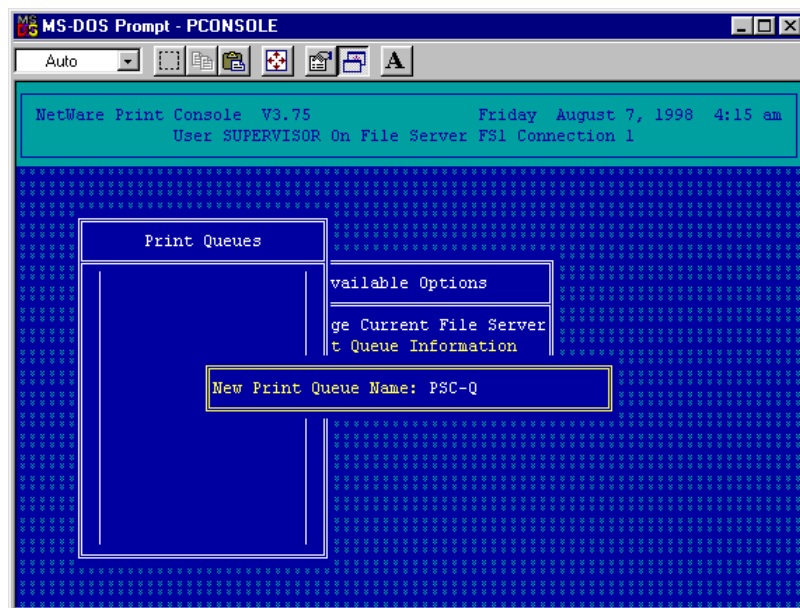
3. Add print queue.

Follow the instruction below.

PCONSOLE



* To go back to previous screen, press [ESC] key.

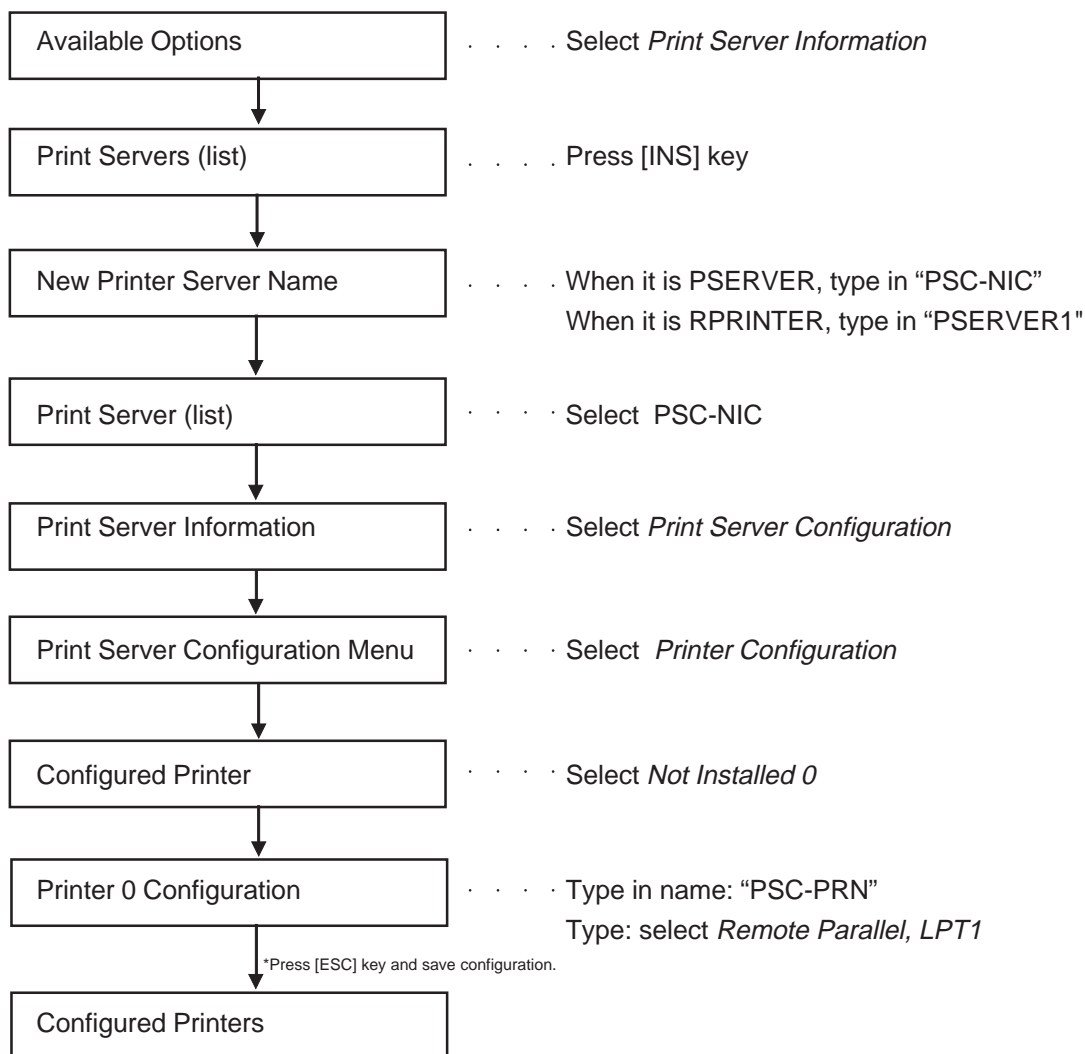


Print Server Card Users Manual

4. Add print server.

Follow the instruction below.

PCONSOLE



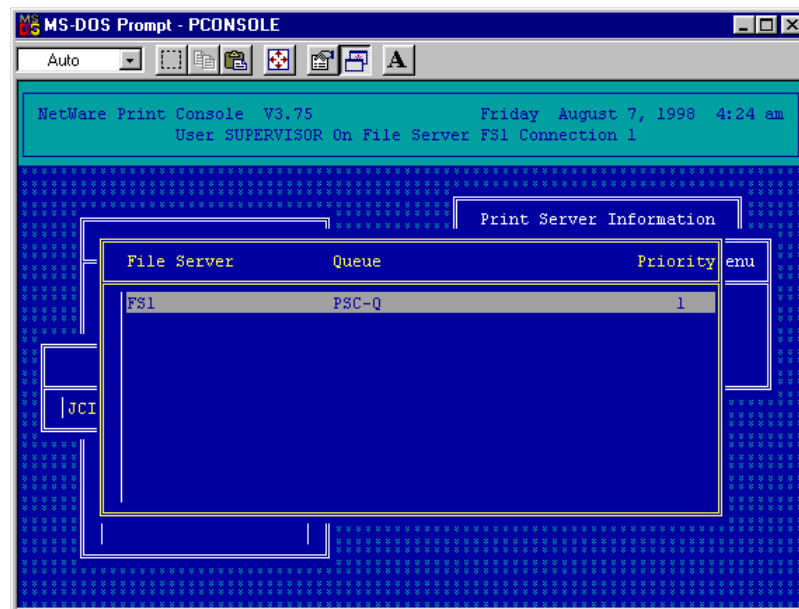
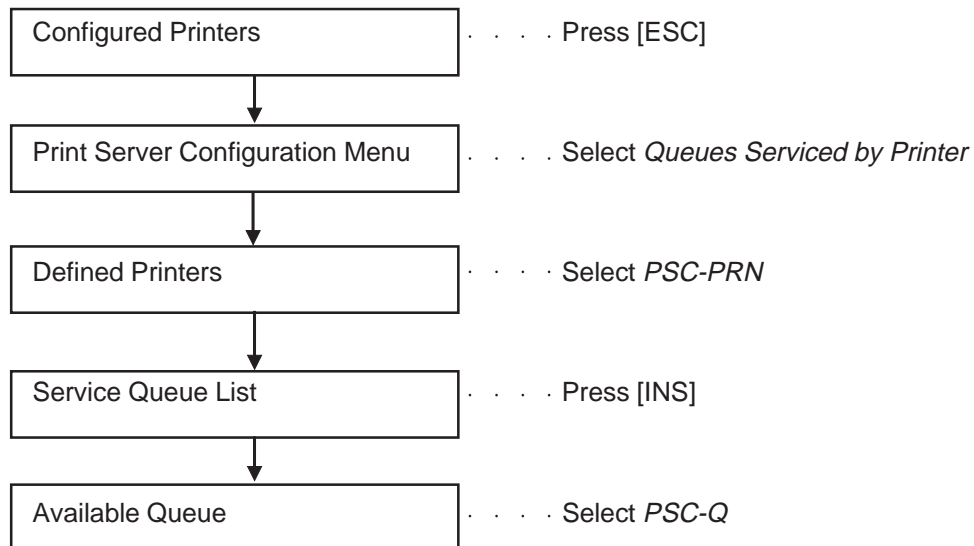
* To go back to previous screen, press [ESC] key.

Print Server Card Users Manual

5. Assign a printer queue to a printer.

Follow the instruction below.

PCONSOLE



NOTE

* To go back to previous screen, press [ESC] key.

Print Server Card Users Manual

- Reset print server on file server when using as remote printer mode.

```
:UNLOAD PSERVER
:LOAD PSERVER PSERVER1
```



TIP

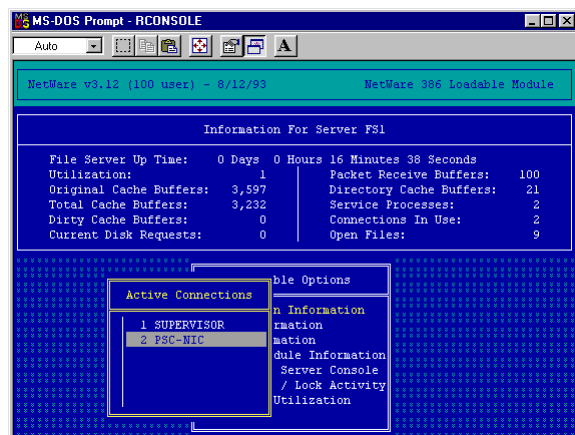
- * There are no need to do instruction 6 when using in print server mode.

- If you are using in print server mode after setting up file server, please refer to instruction 1 & 2 of <Using Print Server Card in Print Server Mode>.

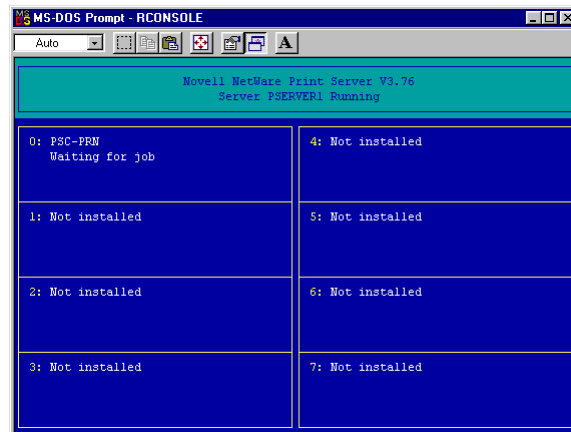
Network Connectivity

After resetting Print Server Card, you will see in print server mode, a print server name (PSC-NIC) on the NetWare server console, the printer name (PSC-PRN) in remote printer mode if the connection was a success.

Print Server Mode



Remote Printer Mode



Print Server Card Users Manual

Print Via File Server

This section explains how to print from DOS NetWare client via NetWare3.x file server.



- * For printing from Windows 95/98/Me via file server, please refer to "Print Via File Server" of Print in NetWare5/4.x Environment.

Use *nprint* and *capture* command to print from DOS NetWare client. For details, refer to NetWare manual.

Below explains about printing using NetWare. For options and other methods, refer to NetWare manual.

- * For *nprint* command printing with sample_n.dat to remote printer without NetWare banner and automatic feeding.

```
A:\>nprint sample_n.dat /q=PSC-Q /s=PLUTO /nb /nff
Queuing data to Server PLUTO, Queue PSC-Q
SYS:LOGIN
Queuing file SAMPLE_N.DAT
A:\>
```

- * For *capture* command printing with sample_n.dat to remote printer without NetWare banner, TAB and automatic feeding.

```
A:\capture q=PSC-Q nb nt nff
Device LPT1: re-routed to queue PSC-Q on Server PLUTO
A:\>copy sample_n.dat prn
1 File(s) copied
A:\>
```