

V. Using in Macintosh Environment

This chapter explains how to configure Print Server Card in a Macintosh environment using AppleTalk Protocol. Print Server Card can be used in the environment with MacOS7.6 or higher, MacOS8, MacOS8.5, KanjiTalk7.1 or higher, KanjiTalk7.5 or higher. Print Server Card does not work with AppleTalk Phase1.

V. Using in Macintosh Environment	5-1
Print with Macintosh	5-2
Installing and loading PSC Setup Utility	5-2
Configuring General	5-6
Configuring AppleTalk	5-7
Set up Printer and Printing	5-8
Configure Other Protocols	5-10
Configuring TCP/IP	5-10
Configuring NetWare	5-11
Configuring NetBEUI	5-13

Print Server Card Users Manual

Print with Macintosh

Use the PSC Setup Utility to configure Print Server Card in a Macintosh environment.



* PSC Setup Utility uses TCP/IP. You need to set up OpenTransport, TCP/IP, or MacTCP.

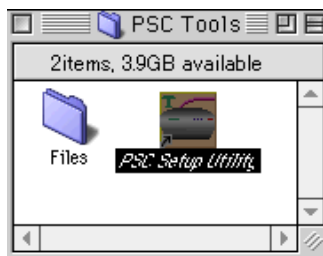
Installing and loading PSC Setup Utility

1. Install

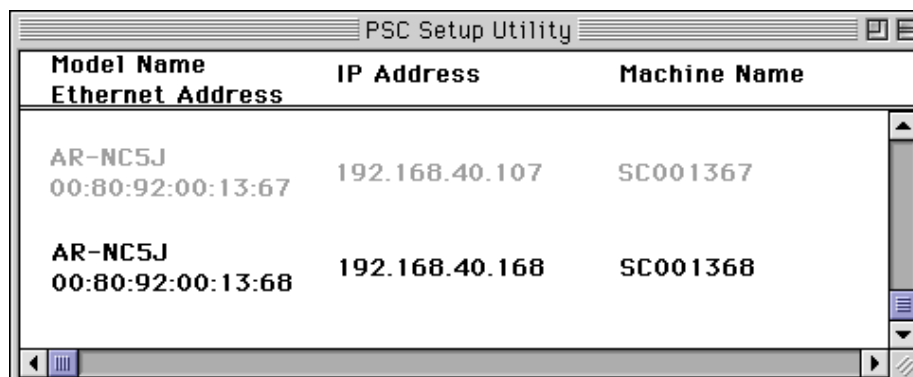
- 1-1. In the CD-ROM, open **Utility** folder and double click **PSC Installer**.
- 1-2. Select the language.
- 1-3. Confirm the Licence Agreement. Then click **Yes**.
- 1-4. Confirm the folder that you are installing to. Then click **Next**.
- 1-5. Enable or disable to execute PSC Setup Utility. Then click **Finish**.

2. Executing PSC Setup Utility

- 2-1. Double click **PSC Setup Utility** in the folder where you created the object.



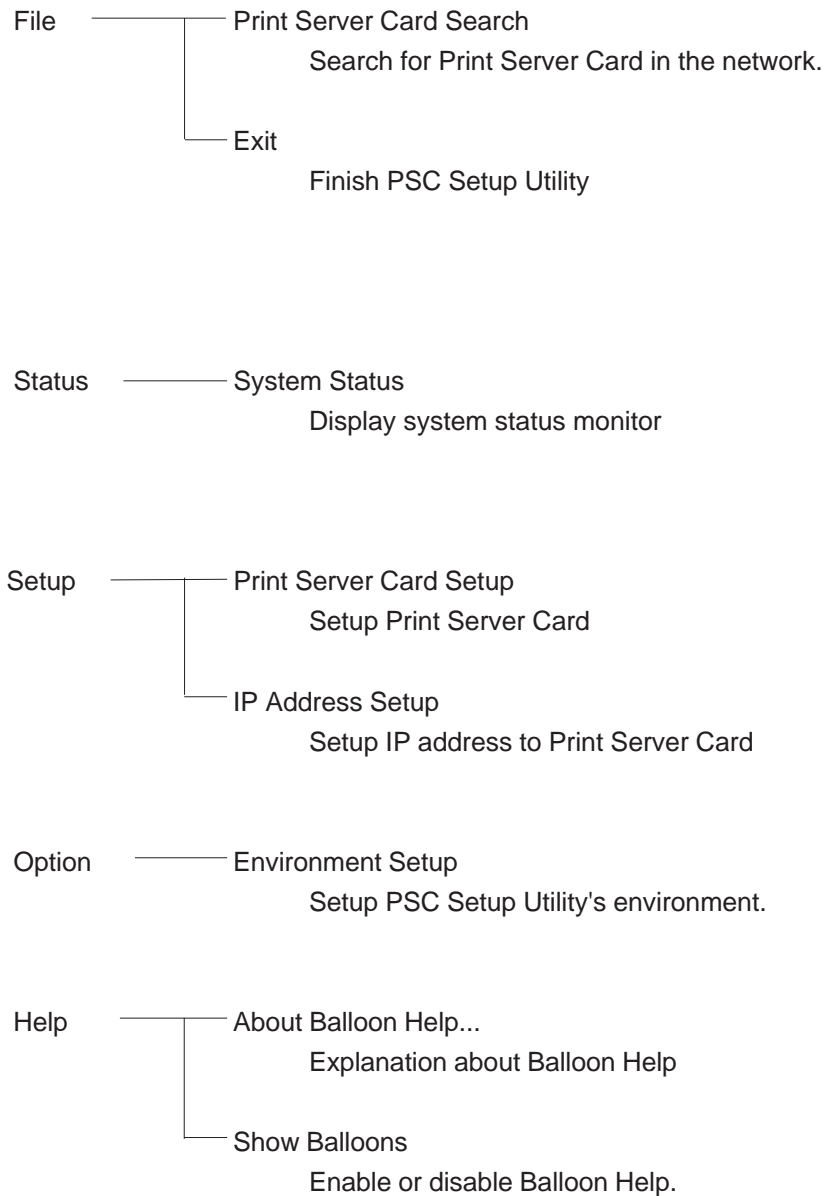
- 2-2. When you execute PSC Setup Utility, it will automatically search for Print Server Card within the network and lists the result.



Model Name	IP Address	Machine Name
Ethernet Address		
AR-NC5J 00:80:92:00:13:67	192.168.40.107	SC001367
AR-NC5J 00:80:92:00:13:68	192.168.40.168	SC001368

Print Server Card Users Manual

2-3. Display of PSC Setup Utility Menu Bar

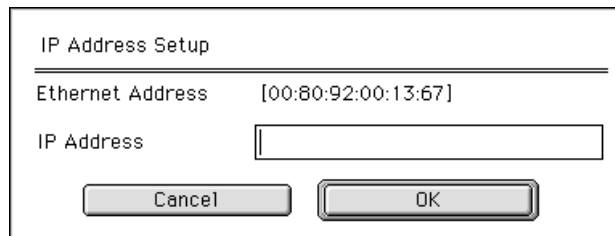


Print Server Card Users Manual

- 2-4. From the list, select the Print Server Card you want to configure. Then select **Setup - Print Server Card Setup**.



- * If the selected Print Server Card does not have an IP address, a message will appear indicating that the IP address is not yet set. Click **OK** and set the IP address.



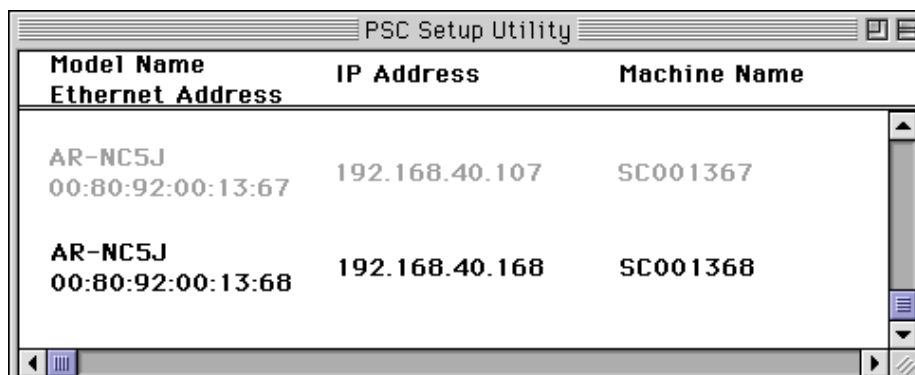
IP Address Setup

Ethernet Address [00:80:92:00:13:67]

IP Address

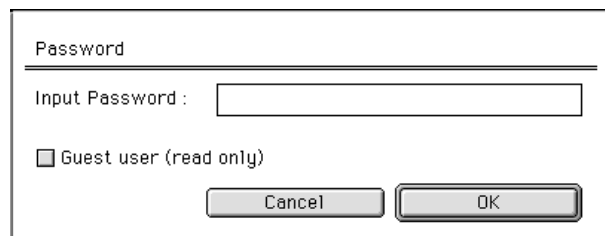
Cancel OK

- 2-5. After IP address is set, reset Print Server Card. Then search for Print Server Card again. From the list, select the Print Server Card you want to configure. The NIC which has not been set is high lighted. Then select **Setup - Print Server Card Setup**.



Model Name	IP Address	Machine Name
Ethernet Address		
AR-NC5J 00:80:92:00:13:67	192.168.40.107	SC001367
AR-NC5J 00:80:92:00:13:68	192.168.40.168	SC001368

- 2-6. **Password** screen will appear. You need to type a password and click **OK**. Then **Print Server Card Setup** will open



Password

Input Password :

☐ Guest user (read only)

Cancel OK



- * Password in Factory default is **Sharp**.

Print Server Card Users Manual

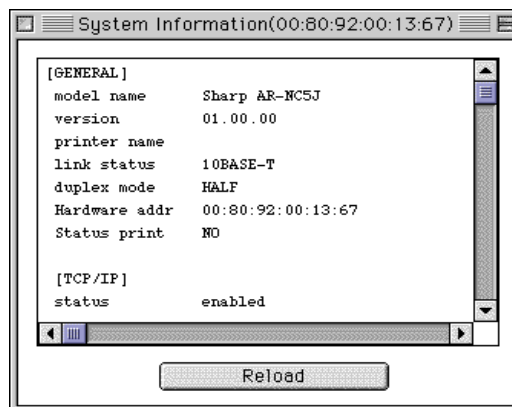
<System Status Monitor>

On PSC Setup Utility menu bar, go to **Status** and open **System Status**. System Status monitor will open. The system status of the selected Print Server Card will be shown. “Reload” button will renew the information of system status.



TIP

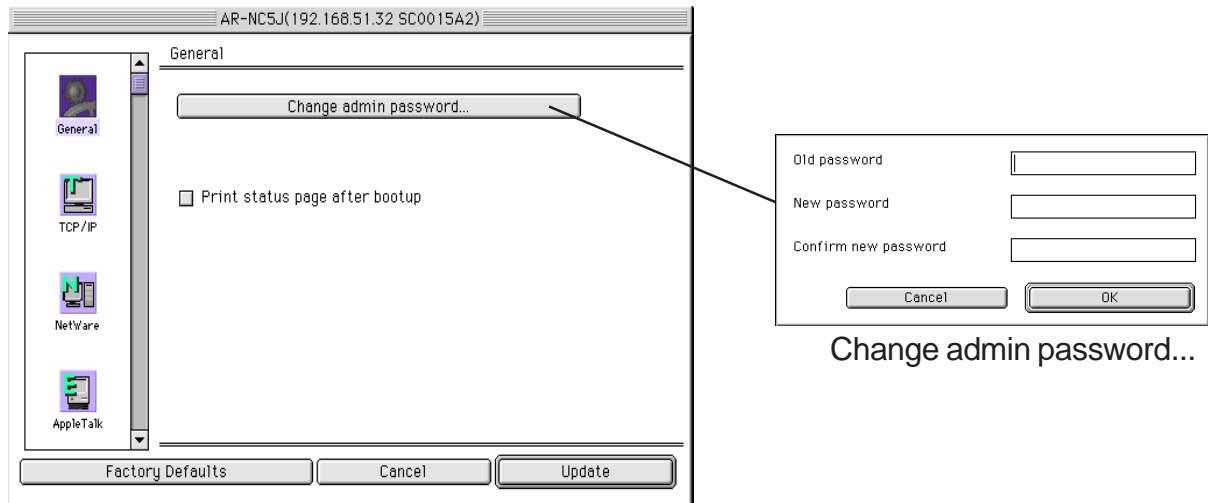
* Display may not be available depending on the printer.



Print Server Card Users Manual

Configuring General

When you click **General**, you will see the screen below.



Description

Change admin password:

Set the administrator password of Print Server Card in ASCII characters. This password is used as the authentication password to change configurations in Telnet, Web pages and configuration tools.



* Password in Factory default is **Sharp**.

TIP

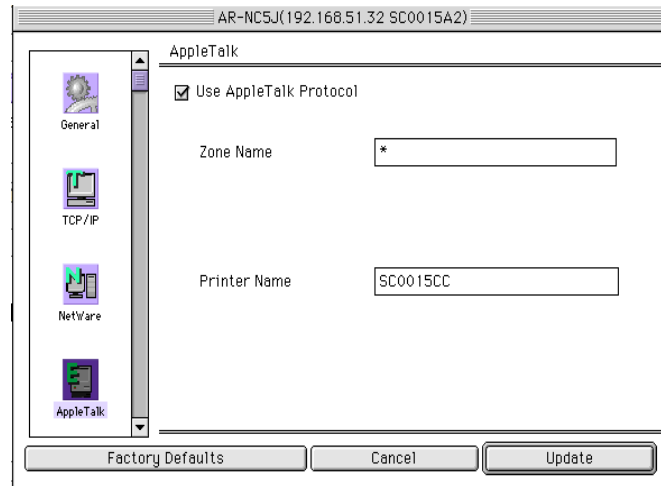
Print status page after bootup:

Select whether to Print status page of Print Server Card or not when the printer boots up.

Print Server Card Users Manual

Configuring AppleTalk

When you click **AppleTalk**, you will see the screen below.



Description

Use AppleTalk Protocol:

Select to enable or disable AppleTalk protocol.

Zone Name:

Specify the name of the zone that Print Server Card belongs to. When this value is blank, Print Server Card will belong to the default zone set by the AppleTalk router in the network.

Printer Name:

Set the AppleTalk printer name. The name set here can be seen in the Chooser. The special symbols in AppleTalk protocol ("=", ":", "@", and "*") must be excluded from the string.

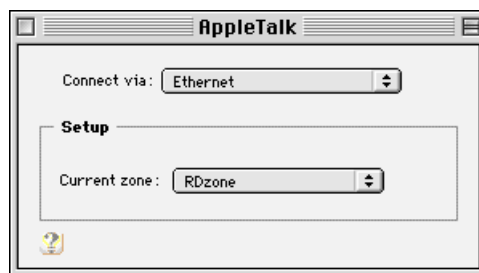
Print Server Card Users Manual

Set up Printer and Printing

This section explains about how to set up AppleTalk and printing driver. The explanation below may vary depending on the Macintosh version. For details please refer to your Macintosh Manual.

1. Set Up Printer

- 1-1. Select **Control Panel** from the AppleMenu of Macintosh. Select **AppleTalk** and select **Ethernet** for connection.



- 1-2. Select the destination for **AppleTalk**. When you close the dialogue, you will see a screen with the new changes. Confirm the change by clicking **save**.



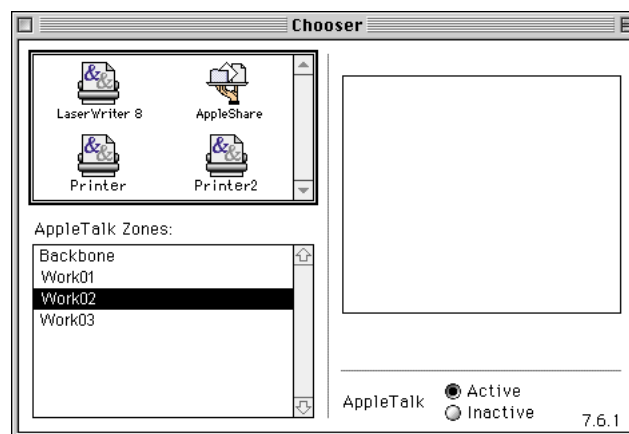
Print Server Card Users Manual

2. Printing

- 2-1. From the **Apple Menu** select **Chooser**. Select the printer driver that the Print Server Card is connected to. If there is a zone, select the correct zone. Print Server Card should be found.



- * If Print Server Card is not in the list, please check to see if the printer power is on, or Print Server Card is connected correctly to the network.
- * If necessary, set up can be done by **Option - Background Print**.



- 2-2. After setting up Print Server Card using **Chooser**, try test printing using **SimpleText**. If you can not print, check and see if Print Server Card is connected to the network correctly.

Print Server Card Users Manual

Configure Other Protocols

PSC Setup Utility can also setup parameters of other protocols.

If you are using Print Server Card for Macintosh environment only, you do not need to setup the following protocols.

Configuring TCP/IP

When you click **TCP/IP**, setup screen for TCP/IP protocol opens. The description for each section is as below.

Use TCP/IP Protocol:

Enable or disable TCP/IP protocol. This setting affects the operation of LPR, FTP, TELNET, SNMP, HTTP, and setup utilities, etc.

Use DHCP/BOOTP:

Enable or disable DHCP/BOOTP protocol. DHCP/BOOTP is the protocol to obtain an IP address from the DHCP or BOOTP server when booting. A properly configured DHCP or BOOTP server must be working correctly in the subnetwork to assign IP Address to Print Server Card by DHCP/BOOTP. Print Server Card recognizes DHCP and BOOTP automatically and adopts the first reply as its own IP address.

Use RARP:

Enable or disable RARP protocol. RARP is the protocol to obtain IP address from RARP server in booting. A properly configured RARP server must be working correctly in the subnetwork to assign the IP address of Print Server Card by RARP.

IP Address:

Assign IP address to Print Server Card. The value must be configured in the format of four-part series of numbers separated by decimal points, such as "xxx.xxx.xxx.xxx".

Subnet Mask:

Assign a subnet mask to Print Server Card. The value must be configured in the format of four-part series of numbers separated by decimal points, such as "xxx.xxx.xxx.xxx". If the value is "0.0.0.0," this setting is invalid.

The subnet mask corresponding to the IP address will be assigned automatically.

Print Server Card Users Manual

Default Gateway:

Assign the IP address of Print Server Card's gateway. The value must be configured in the format of four-part series of numbers separated by decimal points, such as "xxx.xxx.xxx.xxx". The gateway must be in the network where Print Server Card exists. If the value is "0.0.0.0", this setting is invalid.

Use FTP/LPR Banner:

Enable or disable banner page when LPR or FTP is used to print.

Configuring NetWare

When you click **NetWare**, setup screen for NetWare protocol opens. The description for each section is as below.

Use NetWare Protocol:

Enable or disable NetWare protocol.

Print Server Name:

Specify the print server name for Print Server Card to boot in print server mode. Because this configuration is used as the identifier on the network in the NetWare protocol, the print server name must be different from other names in the NetWare environment. It is used as a login name in connecting to the NetWare server.

Frame Type:

Select the default frame type of Print Server Card. If the selected frame type does not work, the frame type will be changed to another type automatically.

Operation Mode:

Select the primary operation mode (print server/remote printer) of Print Server Card. If the selected mode does not work, Print Server Card boots in the other mode.

Print Server Card Users Manual

Print Server

Print Server Setup

File server to be connected:

Set the name of the file server primarily connected. Print Server Card logs into the file server set here when operating in print server mode. Print Server Card searches the file server automatically and logs in if the value is blank.

Password:

Set the password that is authenticated when Print Server Card logs into the file server as a print server. When the password is set for Print Server Card, the same password must be set to the corresponding file server. If Print Server Card is connected to two or more file servers, the same password must be set to all the file servers.

Job Polling Time:

Set the interval for Print Server Card to query the file server for jobs in units of seconds. Usually the value should be the default.

NDS Setup

Bindery Mode:

Enable or disable bindery mode. When disabled, only NDS mode operates. Do not disable except when only NDS mode is needed.

NDS Tree:

Specify the name of the NDS tree connected. Because the tree name is obtained automatically, it is usually unnecessary to specify it here. When there are two or more trees on the same network it is necessary to specify the name here.

NDS Context:

Specify the NDS context connected in print server mode. The context which created the print server on the file server should be specified here.

Print Server Card Users Manual

Remote Printer Mode

Remote Printer Setup

Print server to be connected:

Set the name of the print server primarily connected. Print Server Card connects to the print server set here when operating in remote printer mode. Print Server Card searches print server automatically and connects if the value is blank.

Time Out:

Set the timeout value for Print Server Card to determine the end of the job when operating in remote printer mode in units of seconds. Usually the value should be the default.

Printer Name:

Set the printer name in **Print Server Information** of the NetWare server. It must be same as the **Printer Name** registered in the NetWare server.

Configuring NetBEUI

When you click **NetBEUI**, setup screen for NetBEUI protocol opens. The description for each section is as below.

Use NetBEUI Protocol:

Enable or disable NetBEUI protocol.

Computer Name:

Specify a computer name. The name set here is shown as a computer in **Windows Explorer**. The name must be different from those of other computers.

Workgroup:

Specify the workgroup that Print Server Card belongs to. Enter the default workgroup name or an existing workgroup name. A new workgroup name that does not exist in the network is not shown as **Workgroup**.

Comment:

Set the description of Print Server Card. The information set here is shown as the description (comments) of Print Server Card in Windows network computer.