

SHARP TWAIN AR/DM

User's Guide

SHARP®

Copyright

© 2001 by Sharp Corporation. All rights reserved. Reproduction, adaptation or translation without prior written permission is prohibited, except as allowed under copyright laws.

Trademark Acknowledgements

Sharp[®] is a registered trademark of Sharp Corporation.

Sharpdesk[™] is a trademark of Sharp Corporation.

Microsoft[®] and Windows[®] are registered trademarks of Microsoft Corporation.

Pentium[®] is a registered trademark of Intel Corporation.

All other trademarks identified herein are the property of their respective owners.

User's Guide Organization

This user's guide is organized into the following chapters:

Chapter 1, Introduction

Describes the overview of SHARP TWAIN AR/DM, the definition of terms in this user's guide, and system requirements.

Chapter 2, Installing SHARP TWAIN AR/DM

Provides information on how to install SHARP TWAIN AR/DM.

Chapter 3, Using SHARP TWAIN AR/DM

Explains functions and its usage on each dialog of SHARP TWAIN AR/DM.

Table of Contents

Chapter 1 Introduction.....	2
About This Guide	3
Definitions of Terms	3
Chapter 2 Installing SHARP TWAIN AR/DM	4
Before installing SHARP TWAIN AR/DM	5
Installing SHARP TWAIN AR/DM.....	6
After installing SHARP TWAIN AR/DM	9
Chapter 3 Using SHARP TWAIN AR/DM	12
Part names and functions of SHARP TWAIN AR/DM	13
Operation flow.....	17
Changing the resolution of an image data	19
Acquiring a multi-page file	19
Deleting the spool data automatically.....	20
Acquiring the common cropping area throughout all the pages.....	20
Acquiring a portion of the image data.....	21
Exiting SHARP TWAIN AR/DM	22

Chapter 1

Introduction

Welcome to SHARP TWAIN AR/DM! SHARP TWAIN AR/DM is software, which lets you control the size, resolution, and orientation of monochrome images. This program can also send monochrome images to a variety of TWAIN-compliant applications.

Working with SHARP TWAIN AR/DM, you can:

- Modify images - SHARP TWAIN AR/DM enables you to change the size, resolution, and orientation of monochrome images.
- Acquire images - SHARP TWAIN AR/DM enables you to send monochrome images to a variety of TWAIN-compliant applications.

SHARP TWAIN AR/DM can read the following file format.

- TIFF - uncompressed monochrome images
One dimensional G3, G4 of the FAX image transmission system standard

About This Guide

This User's Guide assumes you have a basic understanding of Windows operation and are familiar with Windows terms. This includes how to start your system and navigate within a Windows environment, and perform such basic Windows functions as copying, printing and moving documents.

For assistance in using Windows or Internet Explorer, refer to your Microsoft Windows user documentation.

Definitions of Terms

As you work with SHARP TWAIN AR/DM, keep in mind how the following terms are used:

TERM	DEFINITION
Spool image data	Means the data stored in your computer by Scan to Desk that can be acquired into SHARP TWAIN A R/DM.
Spool folder	Means the folder that stores image data scanned through the multi-function machine.
Cropping area	Means a portion of image data that is acquired to an application.
Network scanner tool	An application required to acquire the image data scanned through a multi-function machine onto your computer as Scan to Desk, a function of network scanner.

Chapter 2

Installing SHARP TWAIN AR/DM

Before installing SHARP TWAIN AR/DM

SHARP TWAIN AR/DM cannot acquire any image data through a multi-function machine to your TWAIN-compliant application by itself.

To acquire an image data to your TWAIN compliant application, perform Scan to Desktop by Network scanner tool, and then locate the image data into the spool folder on your PC.

Then, acquire the image data stored in the spool folder to your TWAIN-compliant application using SHARP TWAIN AR/DM.

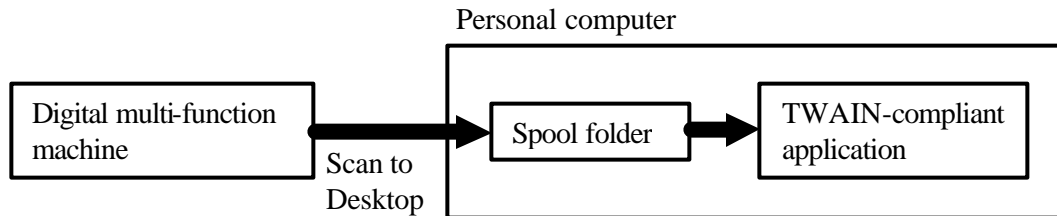


Image data transmission concept

To perform Scan to Desk, you must install Network scanner tool onto your computer beforehand.

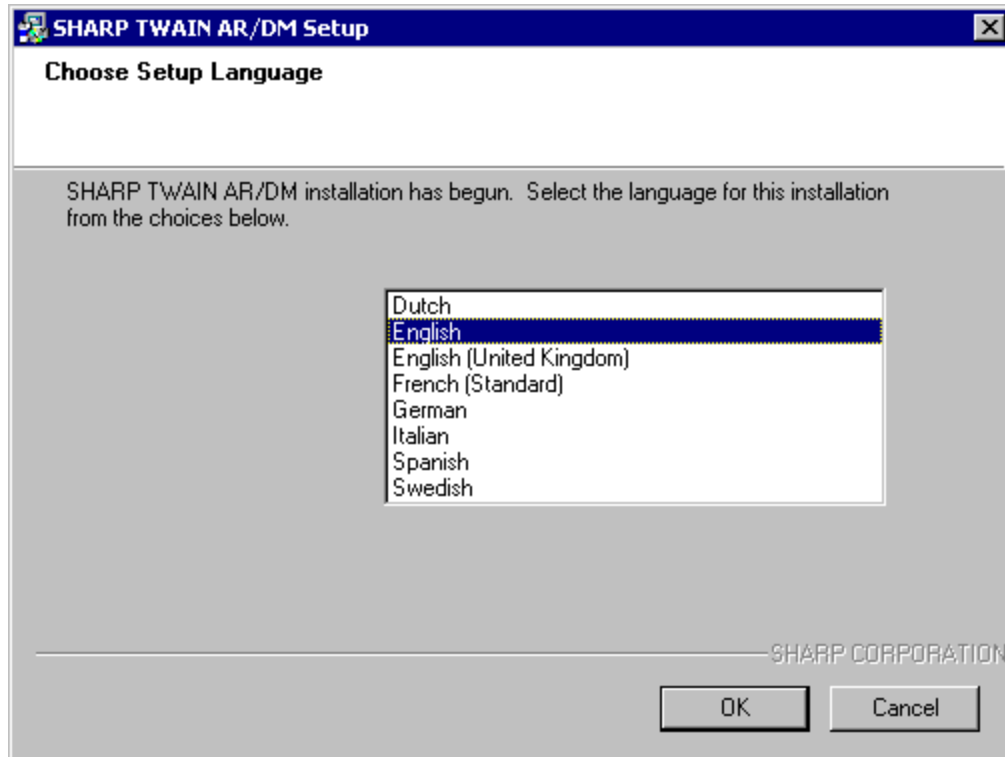
For the detail of the installation and setting of Network scanner tool, refer to "Network scanner tool User's Guide" on the supplied CD-ROM.

Installing SHARP TWAIN AR/DM

1. Start the installer of SHARP TWAIN AR/DM.

To start SHARP TWAIN AR/DM installer, follow the steps shown below.

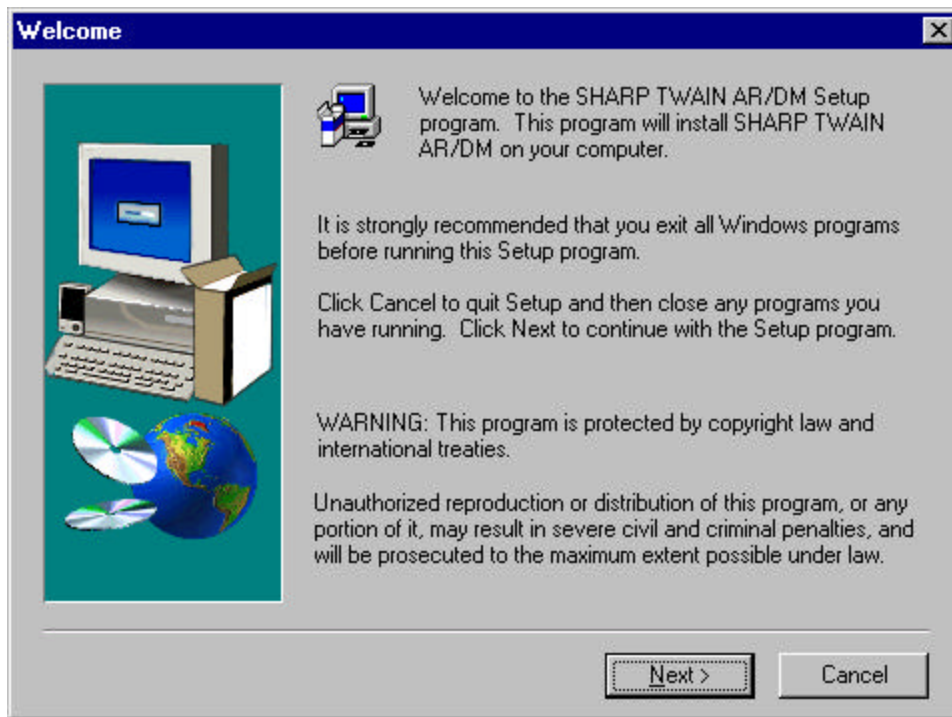
Run "\TWAIN\setup.exe" from your CD-ROM drive. The following dialog will appear when SHARP TWAIN AR/DM installer starts.



[Choose Setup Language] dialog

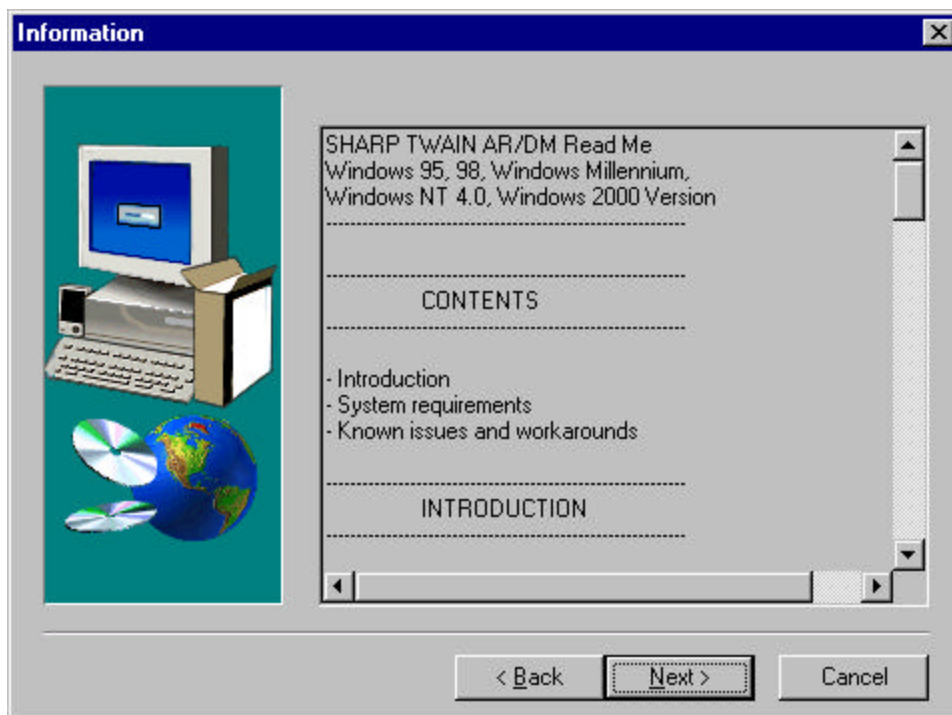
Select the desired language for the installation, and then click the "OK" button.

2. When the "Welcome" dialog appears, click the "Next" button.



[Welcome] dialog

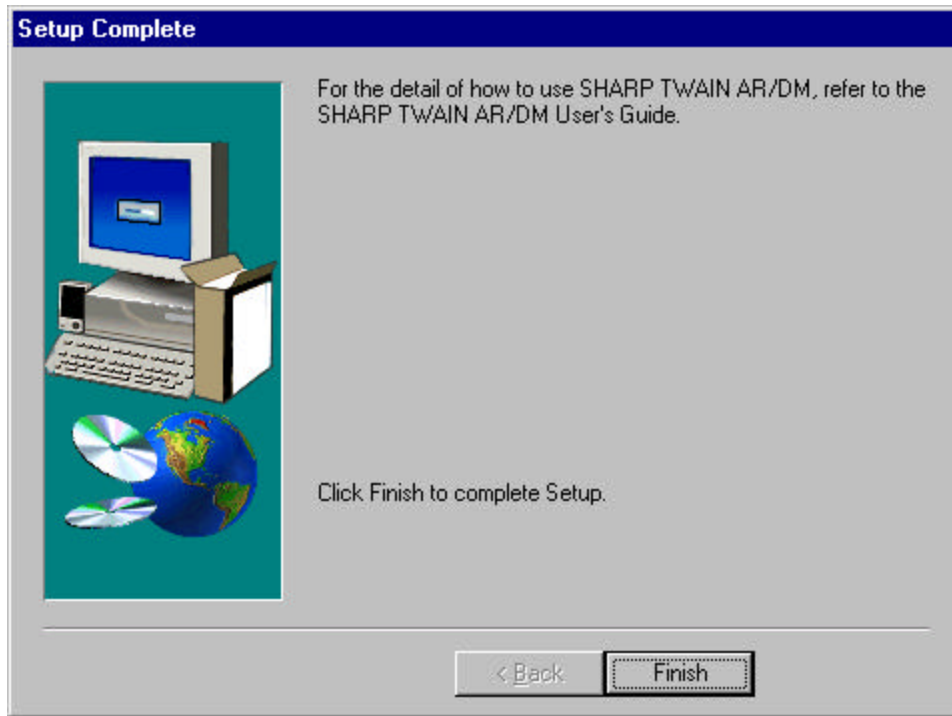
3. Read the information in the "ReadMe" file, and then click the "Next" button.



[ReadMe] dialog

4. The installer will start installing SHARP TWAIN AR/DM. Please wait until the installation completes.

The following dialog appears when the installation completes.



[Setup Complete] dialog

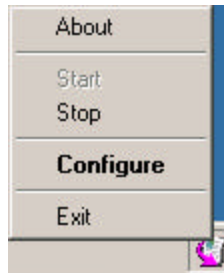
5. Click the "Finish" button to close the dialog.

After installing SHARP TWAIN AR/DM

Make sure that the following settings are appropriately specified when using SHARP TWAIN AR/DM for the first time after the installation. When you intend to acquire an image data through your multi-function machine, make sure that both SHARP TWAIN AR/DM and Network scanner tool have selected the same spool folder, following the steps shown below.

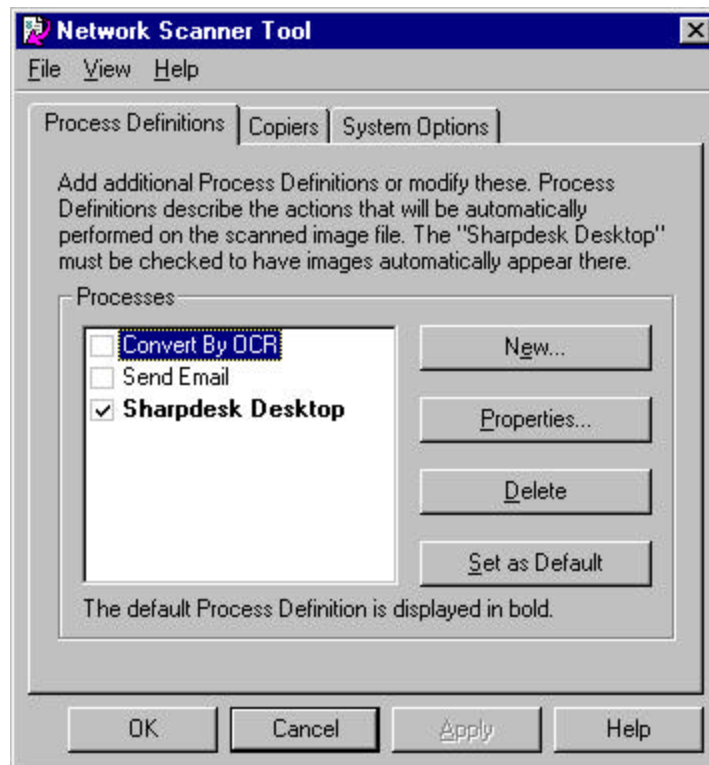
Checking the selected spool folder for Network scanner tool

Right-click the icon on the Windows system tray to show the Network scanner tool menu.



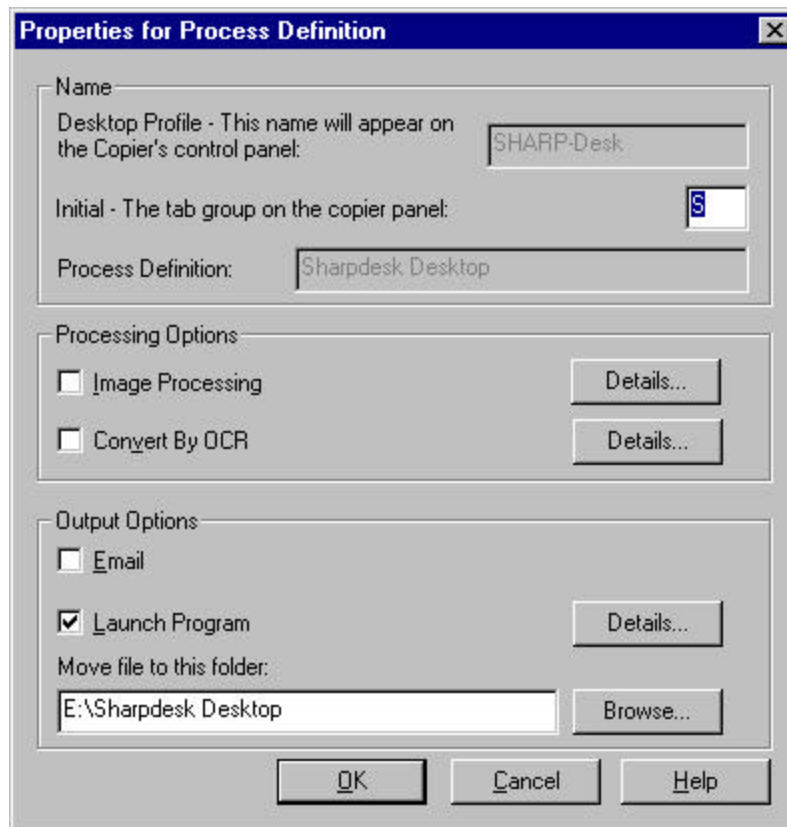
Network scanner tool menu

Click "Configure" to open the "Process Definitions" dialog.



[Process Definitions] dialog

Choose the process definition you want to use, and then click the "Properties" button.



[Properties for Process Definition] dialog

The spool folder of Network scanner tool is shown in the "Move file to this folder" box.

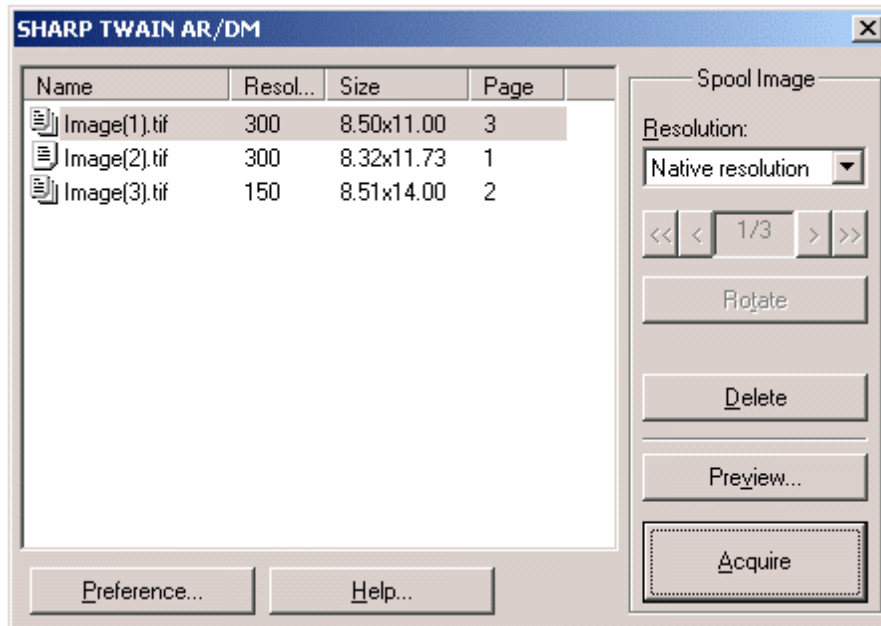
Make sure that this folder is the same one as the spool folder of SHARP TWAINAR/DM.

Canceling the automatic starting of Sharpdesk programs

When "Sharpdesk Desktop" is selected as the Process Definition, the Sharpdesk starts automatically as default. If you do not want to start Sharpdesk automatically, remove the checkmark at "Launch Program" on the "Properties for Process Definition" dialog.

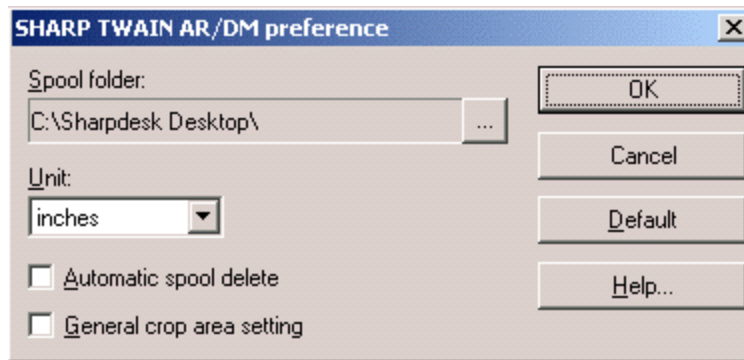
Checking the SHARP TWAIN AR/DM spool folder

Start the "Main" dialog of SHARP TWAIN AR/DM from your TWAIN-compliant application.



[Main] dialog

Click the "Preference" button on the "Main" dialog to check the selected spool folder.



[Preference] dialog

If the folder shown in the "Spool folder" box is different from the spool folder of Network scanner tool, select the same folder.

To change the spool folder, click the "Spool folder" button [...] to open the dialog which lets you select a different folder.

Chapter 3

Using SHARP TWAIN AR/DM

SHARP TWAIN AR/DM driver conforms to TWAIN, the worldwide standard, which enables you to use this driver with a variety of TWAIN-compliant applications. This driver includes the following three dialogs.

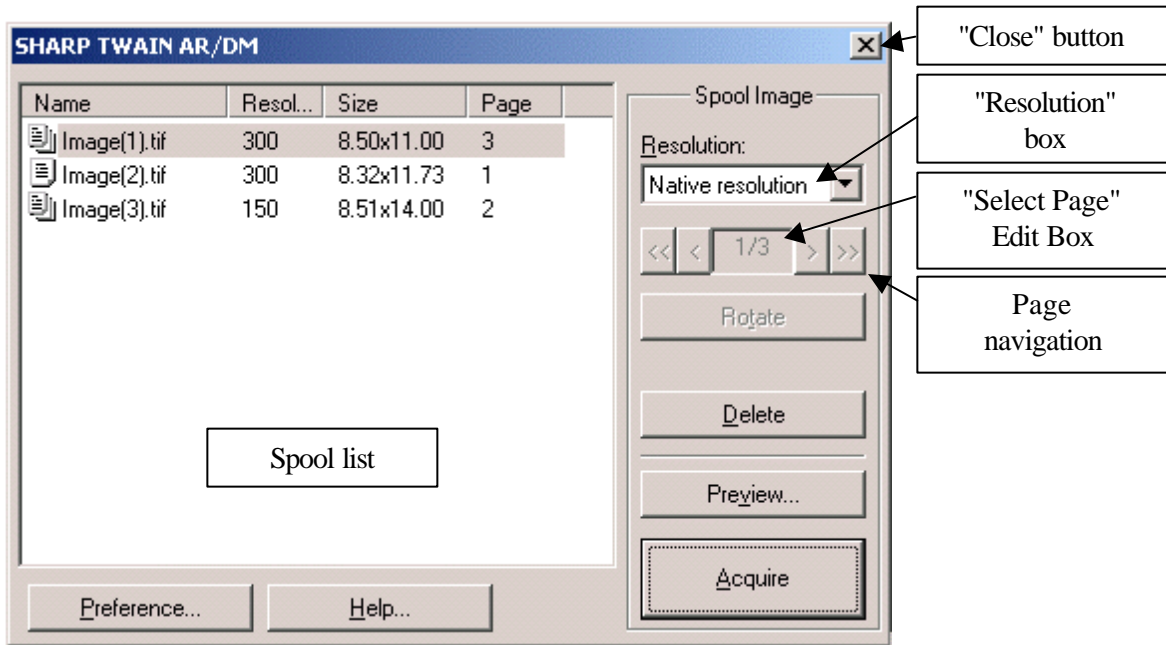
- "Main" dialog
- "Preference" dialog
- "Preview" dialog

This chapter describes how to setup each preference on dialogs from scanning an image data through Network scanner tool to acquiring the data to your TWAIN-compliant application.

Part names and functions of SHARP TWAIN AR/DM

This section describes part names and functions of each dialog.

Part names and functions of "Main" dialog



[Main] dialog

"Resolution" box

Specifies the resolution of acquired image data.

Page navigation

Navigates the pages in the previewed multi-page file.

" << " button

Shows the first page.

" < " button

Shows the previous page.

"Select Page" Edit Box

Shows "the serial number of the current page" / "total page number".

Enter the serial number of the page to view.

" > " button

Shows the next page.

" >> " button

Shows the last page.

"Rotate" button

Rotates the previewed image of the current spool image data clockwise by 90°. This button rotates only the previewed image. The original image data of the file does not be changed by this operation.

The previewed image rotates clockwise by 0°, 90°, 180°, 270°, or 0° as you click the "Rotate" button.

When a cropping area has been selected, the selected area will rotate as the previewed image rotates.

"Delete" button

Deletes the current spool image data. Once deleted, the file cannot be restored.

"Preview" button

Shows the current spool image data in the preview dialog.

"Acquire" button

Acquires the current spool image data to the application.

Spool list



Lists the spool image data.

Items

Shows icon or file name, native resolution [DPI], size [<width> x <height>], and number of pages. The newer files are placed upper on the list.

Icon

You can identify the type of spool image data by following icons.

ICON	DESCRIPTION
	One-page file
	Multi-page file

Selecting spool image data

You can select a spool image data by clicking one of the spool image data on the list.

Showing spool image data

You can show the spool image data in the preview dialog by double clicking one of the spool image data on the list.

The scanned image data does not appear on the spool list when having been acquired through a multi-function machine with SHARP TWAIN AR/DM being activated. In this case, restart SHARP TWAIN AR/DM to show the data on the list.

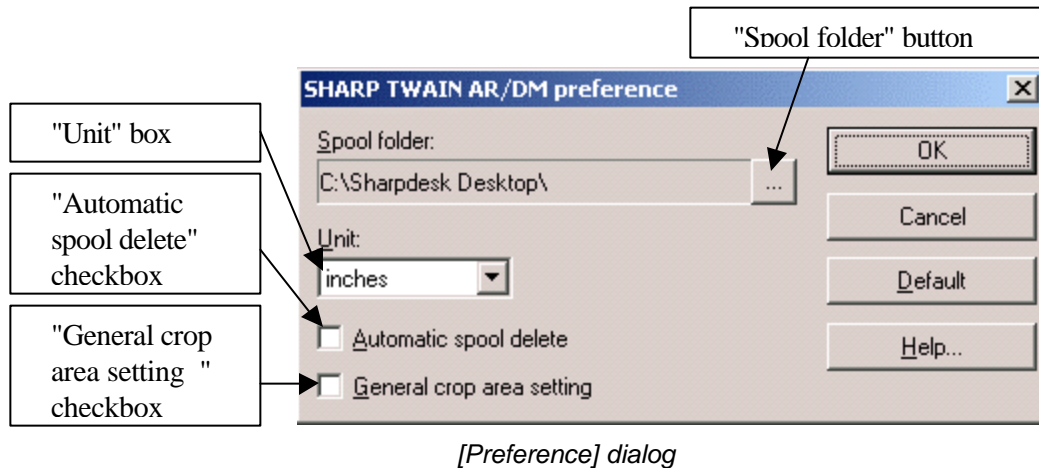
"Preference" button

Opens the "Preference" dialog.

"Help" button

Shows the help file.

Part names and functions of "Preference" dialog



"OK" button

Closes the dialog box applying the changed setting values on the dialog box.

"Cancel" button

Closes the dialog box not applying the changed setting values on the dialog box.

"Default" button

Returns all the setting values to the default values.

"Help" button

Shows the help file.

"Spool folder" button

Shows the "Selecting a spool folder" dialog by clicking the "Spool folder" button [...] to specify the spool folder you want to use.

"Unit" box

Select the unit of measurement from "Inches", "Millimeters", and "Pixel".

The "Size" on the spool list is shown with the unit selected on this box.

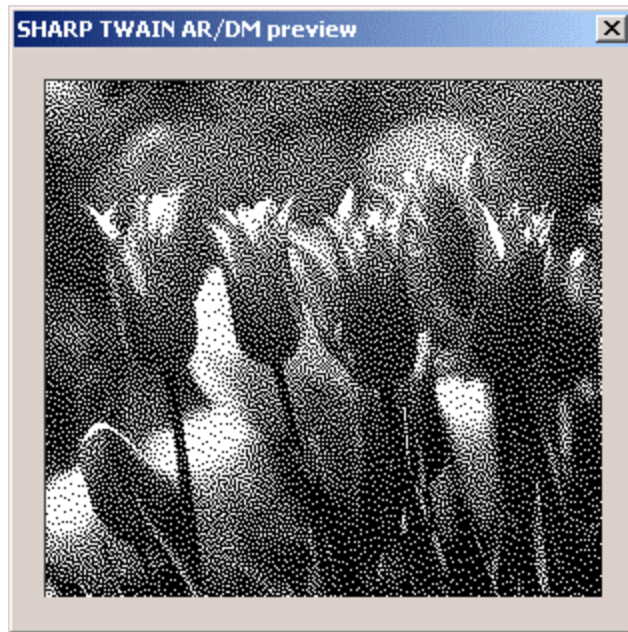
"Automatic spool delete" checkbox

Select whether "Delete" or "Not delete" the acquired spool image data.

"General crop area setting" checkbox

Decide whether to "select the cropping area page by page" or "apply the same cropping area to all the pages" in a multi-page file.

Preview dialog functions



[Preview] dialog

Setting the cropping area

You can select a portion of an image to be acquired to an application.

Operation flow

This section explains how to acquire the image data through a multi-function machine to a TWAIN-compliant application.

Before acquiring an image

Before acquiring an image data, make sure that both SHARP TWAIN AR/DM and Network scanner tool specify the same folder as their spool folder. For the detail, refer to "After installing SHARP TWAIN AR/DM".

Operation on your multi-function machine

1. Set originals on the machine.
2. Specify the destination computer on the operation panel of the machine, and then scan the data. (Scan to Desk) (For the detail of the multi-function machine operation, refer to the network scanner expansion kit operation manual.)
3. The scanned image data will be stored in the spool folder on the destination computer after scanning.

Operation on your computer

4. Start a TWAIN-compliant application on your computer.
5. SHARP TWAIN AR/DM will start. Select SHARP TWAIN AR/DM when your computer has more than one TWAIN-compliant driver.
6. Scan an image with SHARP TWAIN AR/DM after setting preferences as you like on each dialog.
7. Select the image data you want to acquire on the "Main" dialog of SHARP TWAIN AR/DM, and then start acquiring the image.
8. The image data will be acquired to your application.

Changing the resolution of an image data

Choose the resolution of the image to be acquired to the application from the pull-down menu of the "Resolution" box on the "Main" dialog. The resolution must be lower than the native resolution.

Acquiring a multi-page file

To acquire data from a multi-page file, click the "Acquire" button on the "Main" dialog.

The "Specify the page to acquire" dialog will appear, which lets you select the pages to be acquired. You can select the pages in three ways as shown below.

LABEL	DESCRIPTION
[All]	All the data, starting from the first page to the last page in the file, are to be acquired.
[Current Page]	Only the page currently appears in the preview dialog is to be acquired.
[Select Page]	Only the page specified in the "Select page" box is to be acquired.
(EXAMPLE)	
Page to be acquired	Numbers to be entered in the box
To acquire page 1, 3, 6 in this order successively	1,3,6
To acquire page 4,5,6,7,8 in this order	4-8
To acquire page 3,2,1 in this order	3-1

When specifying the pages to be acquired, note that:

- "Current Page" setting cannot be selected when no image appears in the preview dialog.
- Use numbers, comma (,), and hyphen (-) to select pages.
- Throughout all the pages, the same values are applied for "Resolution" and "Rotate".
- When "General crop area setting" is not checked, you can select the cropping area for each page.
- When "General crop area setting" is checked, the cropping area selected for the last time is applied to all the pages.

Deleting the spool data automatically

You can delete the spool image data automatically after acquiring the data to your application by setting preferences on the "File delete confirmation" dialog.

When checking the "Automatic spool delete" checkbox

The image data is automatically deleted after being acquired to the application. If the setting is enabled, the "File delete confirmation" dialog appears after acquiring the spool image data. Click the "OK" button to delete the spool image data. If "Delete the spool image file without showing this message from the next time" box is checked, the spool image data will be deleted without showing this message from the next time. The deleted file cannot be restored.

When not checking the "Automatic spool delete" checkbox

When the box is not checked, the spool image data does not be deleted after being acquired. The image data can be acquired after once acquired.

Acquiring the common cropping area throughout all the pages

You can apply the common cropping area to all the pages in a multi-page file.

When checking the "General crop area setting" checkbox

The cropping area specified on one page will be applied to all other pages.

When not checking the "General crop area setting" checkbox

You can specify individual cropping area on each page.

The cropping area will return to the default size when you change the "General crop area setting".

Acquiring a portion of the image data

You can acquire a portion of the spool image data. Without this operation, the entire page is acquired to your application.

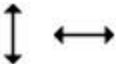

To acquire a portion of the data, follow the steps shown below. If the spool image data has multiple pages, read "Acquiring a multi-page file" and "Acquiring the common cropping area throughout all the pages" before this section.

1. Select the image data you want to acquire on the "Main" dialog, and then click the "Preview" button or double-click the image data. The "Preview" dialog will appear.
2. Place the mouse cursor onto the "Preview" image.
3. Click the edge of the cropping area. In this process, keep placing the mouse button.
4. Drag the mouse toward right-bottom. A rectangle with dotted lines will appear with its one edge at the starting point of the drag and the diagonal counterpart at the ending point. The inside of the rectangle is the cropping area.
5. Release the mouse button to decide the cropping area.

The minimum size of the cropping area is 8 x 8 dots on the "Preview" dialog.

Changing / canceling the cropping area

When the cursor is placed on the cropping area, the shape of the cursor changes as shown below.

ICON	DESCRIPTION
A 	When placed on borders
B 	When placed on corners

Changing the cropping area

When placing the cursor on the border you want to move, the shape of the cursor will change to the icon A shown in the table above. When placing the cursor on the corner you want to move, the shape of the cursor will change to the icon B shown in the table above. After pointing a border or a corner to move, drag the cursor to the desired point, and then release the mouse button. If the cursor goes beyond the opposite side border or corner during this operation, the entire image is reversed horizontally or vertically depending on the position the cursor points.

Canceling the cropping area

Click any portion on the cropping area excluding on the dotted lines to cancel the selected cropping area. The dotted lines will disappear and the cropping area will be canceled. After the cropping area is canceled, the whole page is assumed to be the selected area.

Exiting SHARP TWAIN AR/DM

To exit SHARP TWAIN AR/DM, click the "Close" button on the "Main" dialog.