

SHARP®

MODEL: MX-M850
MX-M950
MX-M1100

DIGITAL MULTIFUNCTIONAL SYSTEM

Software Setup Guide



**BEFORE INSTALLING THE
SOFTWARE**

**SETUP IN A WINDOWS
ENVIRONMENT**

**SETUP IN A MACINTOSH
ENVIRONMENT**

**TROUBLESHOOTING AND
USEFUL INFORMATION**



Keep this manual close at hand for reference
whenever needed.

Thank you for purchasing this product. This manual explains how to install and configure the software that allows the machine to be operated from a computer when an expansion kit such as for the printer function is installed. Read this manual when the printer function or the image send function has been added onto the machine.

Please note

- The explanations in this manual assume that you have a working knowledge of your Windows or Macintosh computer.
- For information on your operating system, please refer to your operating system manual or the online Help function.
- The explanations of screens and procedures in this manual are primarily for Windows® XP in Windows® environments, and Mac OS X v10.4 in Macintosh environments. The screens may vary depending on the version of the operating system.
- Wherever "MX-xxxx" appears in this manual, please substitute your model name for "xxxx".
- This manual contains references to the fax function. However, please note that the fax function is not available in some countries and regions.
- Considerable care has been taken in preparing this manual. If you have any comments or concerns about the manual, please contact your dealer or nearest authorized service representative.
- This product has undergone strict quality control and inspection procedures. In the unlikely event that a defect or other problem is discovered, please contact your dealer or nearest authorized service representative.
- Aside from instances provided for by law, SHARP is not responsible for failures occurring during the use of the product or its options, or failures due to incorrect operation of the product and its options, or other failures, or for any damage that occurs due to use of the product.

Warning

- Reproduction, adaptation or translation of the contents of the manual without prior written permission is prohibited, except as allowed under copyright laws.
- All information in this manual is subject to change without notice.

Illustrations and the operation panel and touch panel shown in this manual

The peripheral devices are generally optional, however, some models include certain peripheral devices as standard equipment. The explanations in this manual assume that a finisher, punch module, saddle unit, folding unit, inserter, large capacity trays, and bypass tray are installed on the MX-M1100.

For some functions and procedures, the explanations assume that devices other than the above are installed.

The display screens, messages, and key names shown in the manual may differ from those on the actual machine due to product improvements and modifications.

SOFTWARE LICENSE

The SOFTWARE LICENSE will appear when you install the software from the CD-ROM. By using all or any portion of the software on the CD-ROM or in the machine, you are agreeing to be bound by the terms of the SOFTWARE LICENSE.

The explanations in this manual are based on American English and the North American version of the software. Software for other countries and regions may vary slightly from the North American version.

TABLE OF CONTENTS

1 BEFORE INSTALLING THE SOFTWARE

CD-ROMS AND SOFTWARE	2
• SOFTWARE CD-ROM THAT ACCOMPANIES THE PRINTER EXPANSION KIT	2
• OTHER CD-ROMS	4
VERIFYING SYSTEM REQUIREMENTS	5
• SYSTEM REQUIREMENTS	5
• SOFTWARE REQUIREMENTS	6
CONNECTING THE MACHINE	7
• CONNECTING TO A NETWORK	7
• CONNECTING THE MACHINE WITH A USB CABLE (Windows)	7

2 SETUP IN A WINDOWS ENVIRONMENT

INSTALLING THE PRINTER DRIVER / PC-FAX DRIVER	8
• WHEN THE MACHINE IS CONNECTED TO A NETWORK	8
• WHEN THE MACHINE WILL BE CONNECTED WITH A USB CABLE	15
• USING THE MACHINE AS A SHARED PRINTER	20
• USING THE STANDARD WINDOWS PS PRINTER DRIVER (Windows 98/Me/NT 4.0) ...	22
• CONFIGURING THE PRINTER DRIVER FOR THE OPTIONS INSTALLED ON THE MACHINE	23
INSTALLING THE PRINTER STATUS MONITOR ..	26
INSTALLING THE PS DISPLAY FONTS	28

3 SETUP IN A MACINTOSH ENVIRONMENT

MAC OS X	29
MAC OS 9.0 - 9.2.2	34

4 TROUBLESHOOTING AND USEFUL INFORMATION

TROUBLESHOOTING	36
CHANGING THE PORT	39
REMOVING THE SOFTWARE	41

1

BEFORE INSTALLING THE SOFTWARE

This chapter mainly describes the software programs that allow you to use the printer functions of the machine, the CD-ROMs that contain the software, and the pages where the installation procedures can be found.

CD-ROMS AND SOFTWARE

The software that can be used with the machine is on the CD-ROMs that accompany the expansion kits. Before installing the software, make sure that your computer and the machine meet the system requirements described in "VERIFYING SYSTEM REQUIREMENTS" (page 5).

SOFTWARE CD-ROM THAT ACCOMPANIES THE PRINTER EXPANSION KIT

The "Software CD-ROM" that accompanies the printer expansion kit contains the printer driver and other software. The "Software CD-ROM" consists of 2 discs.



For users of Windows NT 4.0

The CD-ROM does not include software for Windows NT 4.0.

Contact your dealer or nearest authorized service representative if you want software for Windows NT 4.0.

Disc 1

Software for Windows

• Printer driver

These allow the machine to be used as a printer.

- PCL6 and PCL5e printer driver

The machine supports the Hewlett-Packard PCL6 and PCL5e printer control languages. It is recommended that you use the PCL6 printer driver. If you have a problem printing from older software using the PCL6 printer driver, use the PCL5e printer driver.

- PS printer driver

The PS printer driver supports the PostScript 3 page description language developed by Adobe Systems Incorporated.

- PPD driver

The PPD driver enables the machine to use the standard Windows PS printer driver.

🔗 WHEN THE MACHINE IS CONNECTED TO A NETWORK (page 8)

🔗 WHEN THE MACHINE WILL BE CONNECTED WITH A USB CABLE (page 15)

• Printer Status Monitor (can only be used when the machine is connected to a network)

This allows you to monitor the status of the machine on your computer screen.

🔗 INSTALLING THE PRINTER STATUS MONITOR (page 26)

Disc 2

Software for Windows

• PC-Fax driver

This enables you to send a file from your computer as a fax using the same procedure as when printing the file. (When the fax option is installed.)

Even if the fax function is not installed, the PC-Fax driver can be updated using the CD-ROM in the Internet fax expansion kit to enable you to send a file from your computer as an Internet fax in the same way as you print a file.

☞ INSTALLING THE PRINTER DRIVER / PC-FAX DRIVER (page 8)

The following software can be used only when the machine is connected to a network.

• Printer Administration Utility

This allows the administrator to monitor the machine and configure machine settings from a computer. To install and use the Printer Administration Utility, see the Readme file and the manual in PDF format on the "Software CD-ROM" (Disc 2). The Readme file and manual are in the following folder on the CD-ROM. (Substitute the letter of your CD-ROM drive for "R" in the following path.)

R:\Sadmin\Documents\EnglishA*

* "English A" in North America. "English" in Europe.

Software for Macintosh

• PPD file

This is the printer description file which enables the machine to be used as a PostScript 3 compatible printer. The PS3 expansion kit is required to use the machine in a Macintosh environment.

☞ MAC OS X (page 29)

☞ MAC OS 9.0 - 9.2.2 (page 34)

- To use the machine as a printer in a Macintosh environment, the printer expansion kit and PS3 expansion kit are necessary. In addition, the machine must be connected to a network. A USB connection cannot be used.
- The PC-Fax driver cannot be used in a Macintosh environment.

OTHER CD-ROMS

▶ **"PRINTER UTILITIES" CD-ROM that accompanies the PS3 expansion kit (for Windows/Macintosh)**

This contains the display fonts that are used with the PS printer driver.

(Install the PS printer driver and Macintosh PPD file from the "Software CD-ROM".)

🔗 INSTALLING THE PS DISPLAY FONTS (page 28)

▶ **"PRINTER UTILITIES" CD-ROM that accompanies the Internet fax expansion kit (for Windows)**

This CD-ROM is used to update the PC-Fax driver on the "Software CD-ROM" that accompanies the printer expansion kit so that it can be used to send Internet faxes (PC-I-Fax function).

If you wish to use the PC-I-Fax function, first install the PC-Fax driver from the "Software CD-ROM" and then run the installer on this CD-ROM*. If the PC-Fax driver is already installed, run only the installer. (There is no need to reinstall the PC-Fax driver.)

* To obtain the PC-Fax driver when the printer expansion kit is not installed, consult your dealer or nearest authorized service representative.

🔗 INSTALLING THE PRINTER DRIVER / PC-FAX DRIVER (page 8)

▶ **"Sharpdesk/Network Scanner Utilities" CD-ROM that accompanies the network scanner expansion kit (for Windows)**

This contains software that helps you get the most out of the images that you scan on the machine. The software includes "Sharpdesk", a desktop document management application that enables integrated management of scanned images and files created using a variety of applications. To use the "Scan to Desktop" scanner function, the "Network Scanner Tool" must be installed from the CD-ROM.

For the system requirements of the software, see the manual (PDF format) or the Readme file on the CD-ROM. For the procedures for installing the software, see the separate "Sharpdesk Installation Guide".

VERIFYING SYSTEM REQUIREMENTS

SYSTEM REQUIREMENTS

Before installing the software described in this manual, make sure that your computer satisfies the following requirements.

	Windows	Macintosh*5
Operating system*1	Windows 98, Windows Me, Windows NT Workstation 4.0 (Service Pack 5 or later)*2, Windows 2000 Professional, Windows XP Professional, Windows XP Home Edition, Windows 2000 Server, Windows Server 2003, Windows Vista	Mac OS 9.0 to 9.2.2, Mac OS X v10.1.5, Mac OS X v10.2.8, Mac OS X v10.3.9, Mac OS X v10.4 to 10.4.8
Computer type	IBM PC/AT compatible computer Equipped with a 10Base-T/100Base-TX LAN board or equipped standard with a USB 2.0*3/1.1*4 port.	An environment in which any of the operating systems listed above can fully operate (including Macintosh computers with an Intel processor).
Display	800 x 600 resolution (SVGA) with 256 colors or higher (32,000 colors (16 bit) or higher is recommended)	
Other hardware requirements	An environment that allows any of the above operating systems to fully operate.	

*1 Printing is not possible in MS-DOS mode.

*2 USB is not supported.

*3 The machine's USB 2.0 port will transfer data at the speed specified by the USB2.0 (Hi-Speed) standard only if the Microsoft USB 2.0 driver is preinstalled in the computer, or if the USB 2.0 driver for Windows 2000 Professional/XP/Vista that Microsoft provides through "Windows Update" is installed.

*4 Compatible with models preinstalled with Windows 98, Windows Me, Windows 2000 Professional, Windows XP Professional, Windows XP Home Edition, Windows 2000 Server, Windows Server 2003, or Windows Vista, and which are equipped standard with a USB interface.

*5 Cannot be used when the machine is connected with a USB cable. The PC-Fax driver cannot be used.



For users of Windows NT 4.0

The CD-ROM does not include software for Windows NT 4.0.

Contact your dealer or nearest authorized service representative if you want software for Windows NT 4.0.

SOFTWARE REQUIREMENTS

The following requirements must be met to use the software described in this manual.

Operating system environment*1	Software	Required expansion kits	Type of connection*1
Windows	PCL6 printer driver, PCL5e printer driver	Printer expansion kit	Network/ USB
	PS printer driver, PPD driver	Printer expansion kit, PS3 expansion kit	
	PC-Fax driver*2	Facsimile expansion kit*3	
	Printer Status Monitor	Printer expansion kit	Network only (cannot be used with a USB connection)
	Printer Administration Utility		
Macintosh	Macintosh PPD file	Printer expansion kit, PS3 expansion kit	

*1 For the types of computers and operating systems that can run the software, see "SYSTEM REQUIREMENTS" (page 5).

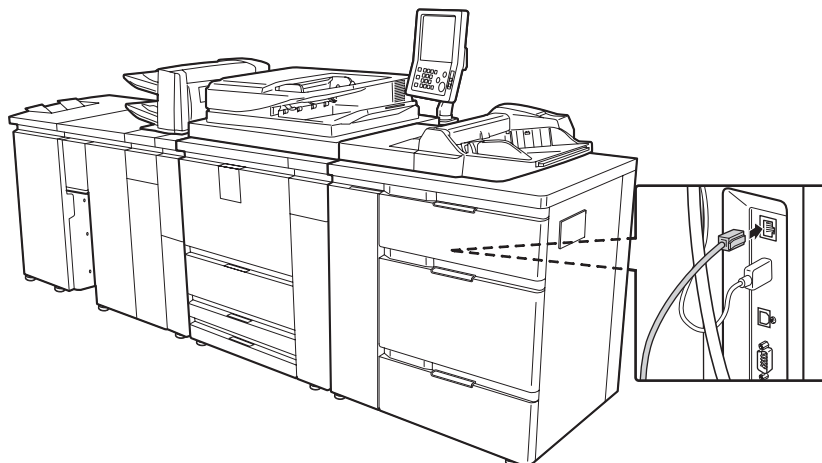
*2 To obtain the PC-Fax driver when the printer expansion kit is not installed, consult your dealer or nearest authorized service representative. To use the PC-Fax driver, Internet Explorer 4.0 or later must be installed on your computer.

*3 When the Internet fax expansion kit is installed, the PC-Fax driver can be updated using the "PRINTER UTILITIES" CD-ROM to enable the driver to be used as a PC-I-Fax driver. In this case, the driver can be used without the facsimile expansion kit.

CONNECTING THE MACHINE


CONNECTING TO A NETWORK

To connect the machine to a network, connect the LAN cable to the machine's network connector. Use a shielded LAN cable.



After connecting the machine to a network, be sure to configure the IP address and other network settings before installing the software. (The factory default setting for the IP address is to receive the IP address automatically when the machine is used in a DHCP environment.)

Network settings can be configured using "Network Settings" in the system settings (administrator) on the machine.

- 
- If the machine is used in a DHCP environment, the IP address of the machine may change. If this happens, printing will not be possible. This problem can be avoided by using a WINS server or by assigning a permanent IP address to the machine.
 - This manual explains how to set up the software in a Windows network environment and in a Macintosh network environment.

► Checking the IP address of the machine

You can check the IP address of the machine by printing out the "All Custom Setting List" in the system settings. Follow these steps to print out the "All Custom Setting List".

Press the [SYSTEM SETTINGS] key, touch the [List Print (User)] key, and then touch the [Print] key of "All Custom Setting List".

CONNECTING THE MACHINE WITH A USB CABLE (Windows)

The machine can be connected to a computer using a USB cable if the computer is a Windows computer. (The USB interface on the machine cannot be used in a Macintosh environment.)

The machine and computer should be connected while the printer driver is being installed. If a USB cable is connected before the printer driver is installed, the printer driver will not be installed correctly. For the procedure for connecting a USB cable, see "WHEN THE MACHINE WILL BE CONNECTED WITH A USB CABLE" (page 15).

2 SETUP IN A WINDOWS ENVIRONMENT

This chapter explains how to install the software and configure settings so that the printer function and other features of the machine can be used with a Windows computer.



For users of Windows NT 4.0

The CD-ROM does not include software for Windows NT 4.0.

Contact your dealer or nearest authorized service representative if you want software for Windows NT 4.0.

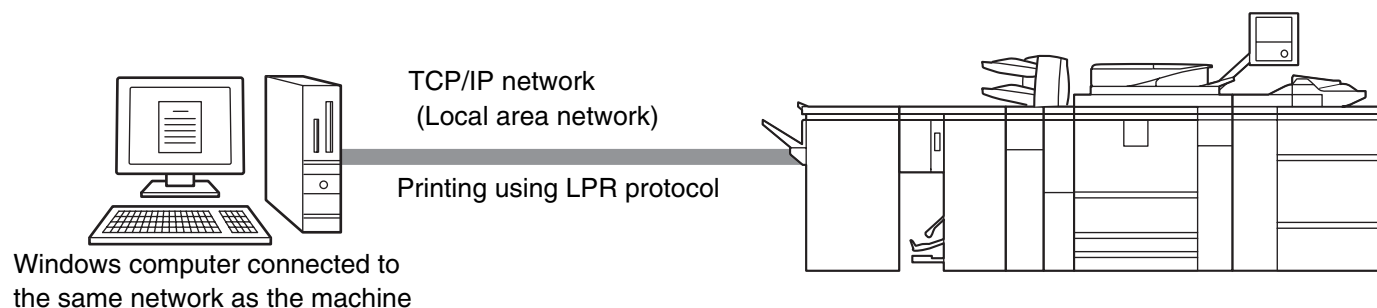
INSTALLING THE PRINTER DRIVER / PC-FAX DRIVER

To install the printer driver or the PC-Fax driver, follow the appropriate procedure in this section depending on whether the machine is connected to a network or connected by USB cable.

👉 WHEN THE MACHINE WILL BE CONNECTED WITH A USB CABLE (page 15)

WHEN THE MACHINE IS CONNECTED TO A NETWORK

This section explains how to install the printer driver and the PC-Fax driver when the machine is connected to a Windows network (TCP/IP network).



Supported operating systems: Windows 98/Me/NT 4.0*/2000*/XP*/Server 2003*/Vista*

* Administrator's rights are required to install the software.




- The PS3 expansion kit is required to use the PS printer driver or the PPD driver.
- To install the PPD driver when Windows 98/Me/NT 4.0 is used, see "USING THE STANDARD WINDOWS PS PRINTER DRIVER (Windows 98/Me/NT 4.0)" (page 22) and install the driver using the Add Printer Wizard.
- To use the machine as a network printer in Windows NT 4.0, "TCP/IP Protocol" must be installed on your computer. If this is not installed, see Windows NT 4.0 Help to install "TCP/IP Protocol".
- **To print to the machine over the Internet using the IPP function when the machine is installed in a remote location, or to print using the SSL (encrypted communication) function, see "Printing using the IPP function and the SSL function" (page 12) and install the printer driver or the PC-Fax driver.**
- The installation procedure in this section is for both the printer driver and the PC-Fax driver, although the explanations are centered on the printer driver.


1 Insert the "Software CD-ROM" into your computer's CD-ROM drive.

- If you are installing the printer driver, insert the "Software CD-ROM" that shows "Disc 1" on the front of the CD-ROM.
- If you are installing the PC-Fax driver, insert the "Software CD-ROM" that shows "Disc 2" on the front of the CD-ROM.


2 Click the [start] button, click [My Computer] (), and then double-click the [CD-ROM] icon ().

- In Windows 98/Me/2000, double-click [My Computer] and then double-click the [CD-ROM] icon.
- In Windows Vista, click the [Start] button (), click [Computer], and then double-click the [CD-ROM] icon.

3 Double-click the [Setup] icon ().

 In Windows Vista, if a message screen appears asking you for confirmation, click [Allow].

4 The "SOFTWARE LICENSE" window will appear. Make sure that you understand the contents of the license agreement and then click the [Yes] button.

 You can show the "SOFTWARE LICENSE" in a different language by selecting the desired language from the language menu. To install the software in the selected language, continue the installation with that language selected.

5 Read the message in the "Welcome" window and then click the [Next] button.

6 Click the [Printer Driver] button.

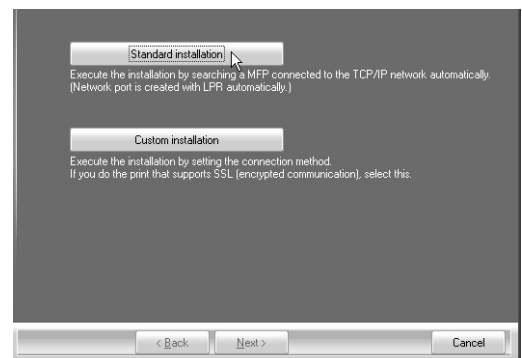
- To install the PC-Fax driver, click the [PC-Fax Driver] button.
- Before installing the software, be sure to click the [Display Readme] button and view the detailed information on the software.




* The above screen appears when the printer driver is being installed.

7 Click the [Next] button.

8 Click the [Standard installation] button.



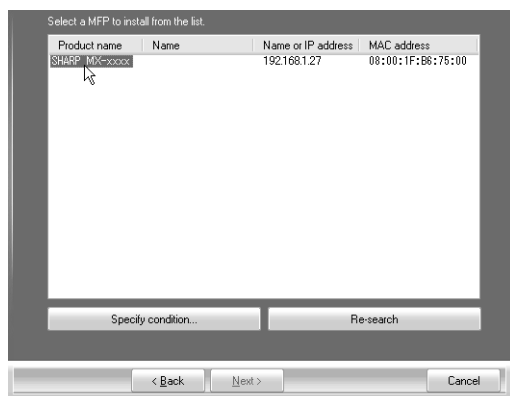
 When [Custom installation] is selected, you can change any of the items below. When [Standard installation] is selected, the installation will take place as indicated below.

- Machine connection method: LPR Direct Print
- Set as default printer: Yes (excluding the PC-Fax driver)
- Printer driver name: Cannot be changed
- PCL printer display fonts: Installed

If you selected [Custom installation], select [LPR Direct Print] and click the [Next] button.
If you selected other than [LPR Direct Print], see the following pages:

- IPP: page 12
- Shared printer: page 20
- Connected to this computer: page 15

9 Printers connected to the network are detected. Select the machine and click the [Next] button.



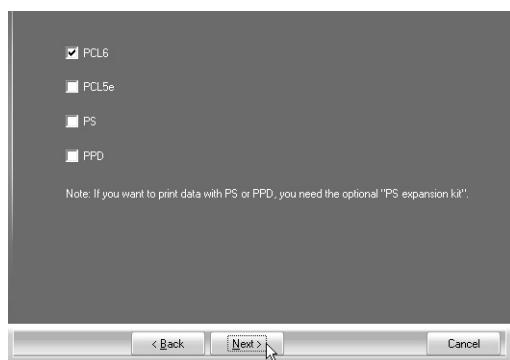
- If the machine is not found, make sure that the machine is powered on and that the machine is connected to the network, and then click the [Re-search] button.
- You can also click the [Specify condition] button and search for the machine by entering the machine's name (host name) or IP address.

Checking the IP address of the machine (page 7)

10 A confirmation window appears. Check the contents and then click the [Next] button.

11 When the printer driver selection window appears, select the printer driver to be installed and click the [Next] button.

Click the checkbox of the printer driver to be installed so that a checkmark (☒) appears.



- When the PC-Fax driver is being installed, this screen does not appear. Go to the next step.
- The PS3 expansion kit is required to use the PS printer driver or the PPD driver.
- The [PPD] checkbox only appears if you are using Windows 2000/XP/Server 2003/Vista.

12 When you are asked whether or not you want the printer to be your default printer, make a selection and click the [Next] button.

If you are installing multiple drivers, select the printer driver to be used as the default printer.

If you do not wish to set one of the printer drivers as the default printer, select [No].



If you clicked the [Custom installation] button in step 8, the following windows will appear.

• Printer name window

If you wish to change the printer name, enter the desired name and click the [Next] button.

• Window confirming installation of the display fonts

To install the display fonts for the PCL printer driver, select [Yes] and click the [Next] button.

- When the PC-Fax driver is being installed, this screen does not appear. Go to the next step.
- If you are not installing the PCL printer driver (you are installing the PS printer driver or the PPD driver), select [No] and click the [Next] button.

13 Follow the on-screen instructions.

Read the message in the window that appears and click the [Next] button.

Installation begins.



• If you are using Windows 2000/XP/Server 2003

If a warning message regarding the Windows logo test or digital signature appears, be sure to click the [Continue Anyway] or [Yes] button.

• If you are using Windows Vista

If a security warning window appears, be sure to click [Install this driver software anyway].

14 When the installation completed screen appears, click the [OK] button.

15 Click the [Close] button in the window of step 6.



After the installation, a message prompting you to restart your computer may appear. If this message appears, click the [Yes] button to restart your computer.


This completes the installation.

- After installation, see "CONFIGURING THE PRINTER DRIVER FOR THE OPTIONS INSTALLED ON THE MACHINE" (page 23) to configure the printer driver settings.
- If you installed the PS printer driver or the PPD driver, the PS display fonts can be installed from the "PRINTER UTILITIES" CD-ROM that accompanies the PS3 expansion kit. See "INSTALLING THE PS DISPLAY FONTS" (page 28).
- If you are using the machine as a shared printer, see "USING THE MACHINE AS A SHARED PRINTER" (page 20) to install the printer driver on each of the client computers.

► Printing using the IPP function and the SSL function

The IPP function can be used to print to the machine over a network using HTTP protocol.


When the machine is in a remote location, this function can be used in place of the fax function to print a higher quality image than a fax. The IPP function can also be used in combination with the SSL (encrypted communication) function to encrypt the print data. This enables secure printing with no concern that the data will be leaked to others.

 To use the SSL function, configure the "SSL Settings" in the system settings (administrator) of the machine. To configure the settings, see the Administrator's Guide.


1 Insert the "Software CD-ROM" into your computer's CD-ROM drive.

- If you are installing the printer driver, insert the "Software CD-ROM" that shows "Disc 1" on the front of the CD-ROM.
- If you are installing the PC-Fax driver, insert the "Software CD-ROM" that shows "Disc 2" on the front of the CD-ROM.


2 Click the [start] button, click [My Computer] (), and then double-click the [CD-ROM] icon ().

- In Windows 98/Me/2000, double-click [My Computer] and then double-click the [CD-ROM] icon.
- In Windows Vista, click the [Start] button (), click [Computer], and then double-click the [CD-ROM] icon.

3 Double-click the [Setup] icon ().

 In Windows Vista, if a message screen appears asking you for confirmation, click [Allow].

4 The "SOFTWARE LICENSE" window will appear. Make sure that you understand the contents of the license agreement and then click the [Yes] button.

 You can show the "SOFTWARE LICENSE" in a different language by selecting the desired language from the language menu. To install the software in the selected language, continue the installation with that language selected.

5 Read the message in the "Welcome" window and then click the [Next] button.

6 Click the [Printer Driver] button.

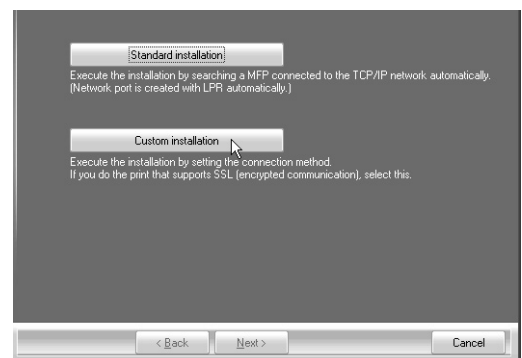
- To install the PC-Fax driver, click the [PC-Fax Driver] button.
- Before installing the software, be sure to click the [Display Readme] button and view the detailed information on the software.



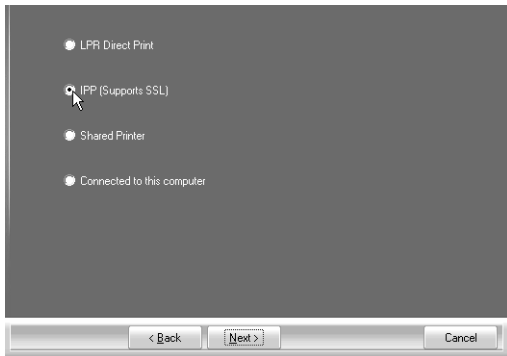
* The above screen appears when the printer driver is being installed.

7 Click the [Next] button.

8 Click the [Custom installation] button.

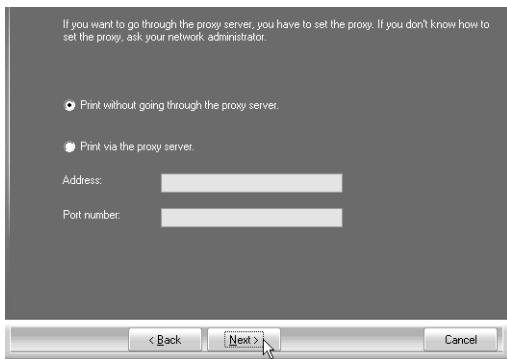


- 9** When you are asked how the printer is connected, select [IPP] and click the [Next] button.



- 10** If a proxy server is used, specify the proxy server and click the [Next] button.

To specify a proxy server, select [Print via the proxy server] and then enter the [Address] and [Port number].



- 11** Enter the machine's URL and click the [Next] button.

Enter the URL in the following format:

Normal format:

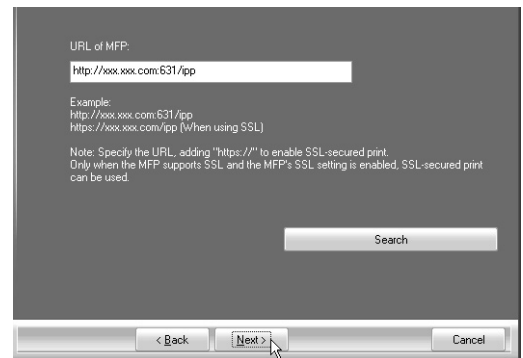
http://<the machine's domain name or IP address>:631*/ipp
*1 Normally "631" should be entered for the port number.

If the IPP port number has been changed on the machine, enter the new port number.

When SSL is used:

https://< the machine's domain name or IP address>:<port number*2>/ipp
*2 Normally the port number and the colon ":"

immediately preceding the port number can be omitted. If the IPP port number for SSL has been changed on the machine, enter the new port number.

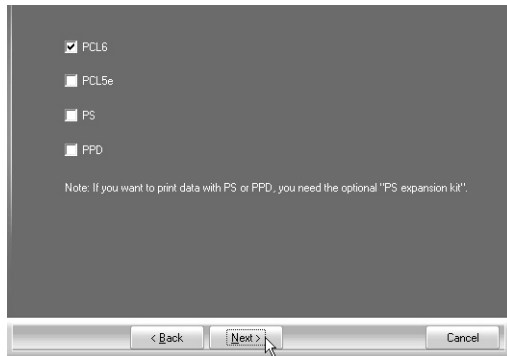


If your computer and the machine are connected to the same local area network, you can click the [Search] button to search for the machine. The machine's URL will appear. Select the URL and click the [OK] button. You will return to the above screen and the machine's URL will be automatically entered.

- 12** When the model selection window appears, select the model name of your machine and click the [Next] button.

13 When the printer driver selection window appears, select the printer driver to be installed and click the [Next] button.

Click the checkbox of the printer driver to be installed so that a checkmark (☒) appears.



- When the PC-Fax driver is being installed, this screen does not appear. Go to the next step.
- The PS3 expansion kit is required to use the PS printer driver or the PPD driver.
- The [PPD] checkbox only appears if you are using Windows 2000/XP/Server 2003/Vista.

14 Select whether or not you wish the printer to be your default printer and click the [Next] button.

If you are installing multiple drivers, select the printer driver to be used as the default printer.

If you do not wish to set one of the printer drivers as the default printer, select [No].

15 When the printer name window appears, click the [Next] button.

If you wish to change the printer name, enter the desired name.

16 When you are asked if you wish to install the display fonts, select an answer and click the [Next] button.

- When the PC-Fax driver is being installed, this screen does not appear. Go to the next step.
- If you are not installing the PCL printer driver (you are installing the PS printer driver or the PPD driver), select [No] and click the [Next] button.

17 Follow the on-screen instructions.

Read the message in the window that appears and click the [Next] button.

Installation begins.



- **If you are using Windows 2000/XP/Server 2003**
If a warning message regarding the Windows logo test or digital signature appears, be sure to click the [Continue Anyway] or [Yes] button.
- **If you are using Windows Vista**
If a security warning window appears, be sure to click [Install this driver software anyway].

18 When the installation completed screen appears, click the [OK] button.

19 Click the [Close] button in the window of step 6.



After the installation, a message prompting you to restart your computer may appear. If this message appears, click the [Yes] button to restart your computer.

This completes the installation.

- After installation, see "CONFIGURING THE PRINTER DRIVER FOR THE OPTIONS INSTALLED ON THE MACHINE" (page 23) to configure the printer driver settings.
- If you installed the PS printer driver or the PPD driver, the PS display fonts can be installed from the "PRINTER UTILITIES" CD-ROM that accompanies the PS3 expansion kit. See "INSTALLING THE PS DISPLAY FONTS" (page 28).

WHEN THE MACHINE WILL BE CONNECTED WITH A USB CABLE

Supported operating systems: Windows 98/Me/2000*/XP*/Server 2003*/Vista*

* Administrator's rights are required to install the software.



- The PS3 expansion kit is required to use the PS printer driver or the PPD driver.
- To install the PPD driver when Windows 98/Me is used, see "USING THE STANDARD WINDOWS PS PRINTER DRIVER (Windows 98/Me/NT 4.0)" (page 22) and install the driver using the Add Printer Wizard.
- To use the port created when the printer driver is installed for fax data transfer, install the printer driver first and then install the PC-Fax driver.

1 Make sure that a USB cable is not connected to your computer and the machine.

If a cable is connected, a Plug and Play window will appear. If this happens, click the [Cancel] button to close the window and disconnect the cable.




The cable will be connected in step 14.

2 Insert the "Software CD-ROM" into your computer's CD-ROM drive.

Insert the "Software CD-ROM" that shows "Disc 1" on the front of the CD-ROM.

3 Click the [start] button, click [My Computer] (), and then double-click the [CD-ROM] icon ().

- In Windows 98/Me/2000, double-click [My Computer] and then double-click the [CD-ROM] icon.
- In Windows Vista, click the [Start] button (), click [Computer], and then double-click the [CD-ROM] icon.

4 Double-click the [Setup] icon ().



In Windows Vista, if a message screen appears asking you for confirmation, click [Allow].

5 The "SOFTWARE LICENSE" window will appear. Make sure that you understand the contents of the license agreement and then click the [Yes] button.



You can show the "SOFTWARE LICENSE" in a different language by selecting the desired language from the language menu. To install the software in the selected language, continue the installation with that language selected.

6 Read the message in the "Welcome" window and then click the [Next] button.

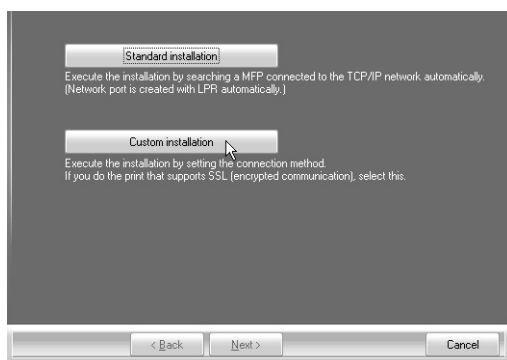
7 Click the [Printer Driver] button.

Before installing the software, be sure to click the [Display Readme] button and view the detailed information on the software.

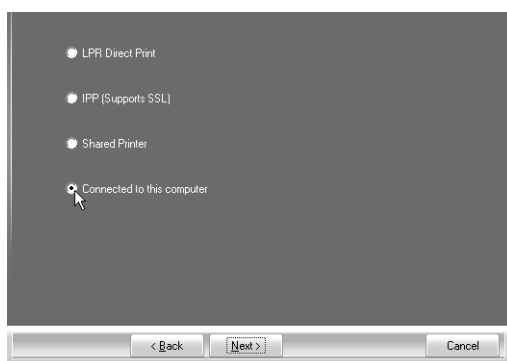


8 Click the [Next] button.

9 Click the [Custom installation] button.



10 When you are asked how the printer is connected, select [Connected to this computer] and click the [Next] button.



11 When you are asked if you wish to install the display fonts, select an answer and click the [Next] button.

12 Follow the on-screen instructions.

Read the message in the window that appears and click the [Next] button. When the installation completed screen appears, click the [OK] button.



- **If you are using Windows 2000/XP/Server 2003**
If a warning message regarding the Windows logo test or digital signature appears, be sure to click the [Continue Anyway] or [Yes] button.
- **If you are using Windows Vista**
If a security warning window appears, be sure to click [Install this driver software anyway].

13 Click the [Close] button in the window of step 7.

When a message appears prompting you to connect the machine to your computer, click the [OK] button.

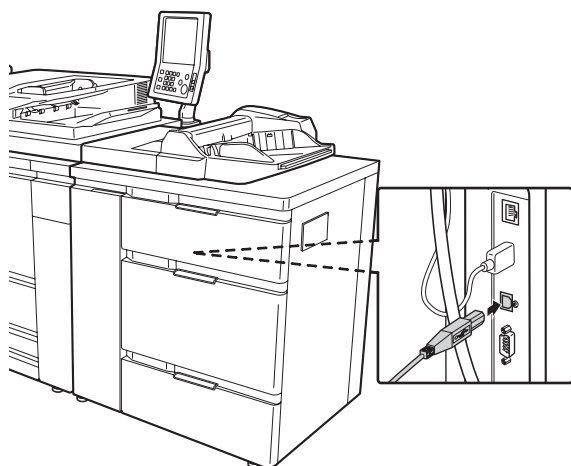


After the installation, a message prompting you to restart your computer may appear. If this message appears, click the [Yes] button to restart your computer.

14 Connect the machine to your computer with a USB cable.

- (1) Make sure that the machine is powered on.
- (2) Connect the cable to the USB connector (B type) on the machine.

The USB interface on the machine complies with the USB 2.0 (Hi-Speed) standard. Please purchase a shielded USB cable.



- (3) Connect the other end of the cable to the USB connector (A type) on your computer.

The machine is found and a Plug and Play window appears.

15 Installation of the PCL6 printer driver begins.

When the "Found New Hardware Wizard" appears, select [Install the software automatically (Recommended)], click the [Next] button, and follow the on-screen instructions.



• If you are using Windows 2000/XP/Server 2003

If a warning message regarding the Windows logo test or digital signature appears, be sure to click the [Continue Anyway] or [Yes] button.

• If you are using Windows Vista

If a security warning window appears, be sure to click [Install this driver software anyway].

This completes the installation.

- After installing the printer driver, see "CONFIGURING THE PRINTER DRIVER FOR THE OPTIONS INSTALLED ON THE MACHINE" (page 23) to configure the printer driver settings.
- If you are using the machine as a shared printer, see "USING THE MACHINE AS A SHARED PRINTER" (page 20) to install the printer driver on each of the client computers.

When installing the PCL5e printer driver, PS printer driver, PPD driver, or PC-Fax driver

Installation is possible even after the USB cable has been connected.

1 Insert the "Software CD-ROM" into your computer's CD-ROM drive.

- If you are installing the printer driver, insert the "Software CD-ROM" that shows "Disc 1" on the front of the CD-ROM.
- If you are installing the PC-Fax driver, insert the "Software CD-ROM" that shows "Disc 2" on the front of the CD-ROM.

2 Click the [start] button, click [My Computer] (), and then double-click the [CD-ROM] icon ().

- In Windows 98/Me/2000, double-click [My Computer] and then double-click the [CD-ROM] icon.
- In Windows Vista, click the [Start] button (), click [Computer], and then double-click the [CD-ROM] icon.

3 Double-click the [Setup] icon ().



In Windows Vista, if a message screen appears asking you for confirmation, click [Allow].

4 The "SOFTWARE LICENSE" window will appear. Make sure that you understand the contents of the license agreement and then click the [Yes] button.



You can show the "SOFTWARE LICENSE" in a different language by selecting the desired language from the language menu. To install the software in the selected language, continue the installation with that language selected.

5 Read the message in the "Welcome" window and then click the [Next] button.

6 Click the [Printer Driver] button.

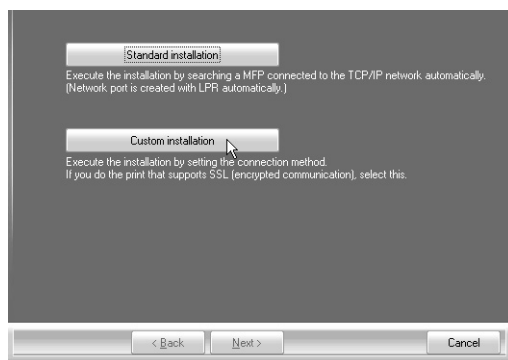
- To install the PC-Fax driver, click the [PC-Fax Driver] button.
- Before installing the software, be sure to click the [Display Readme] button and view the detailed information on the software.



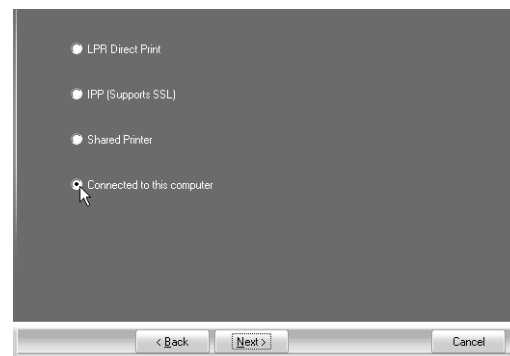
* The above screen appears when the printer driver is being installed.

7 Click the [Next] button.

8 Click the [Custom installation] button.

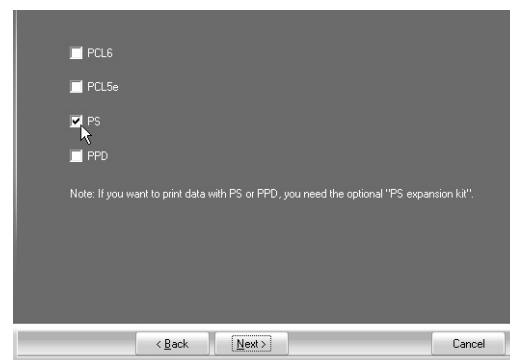


9 When you are asked how the printer is connected, select [Connected to this computer] and click the [Next] button.



10 When the port selection window appears, select the port that the PCL6 printer driver is using (USB001, etc.) and click the [Next] button.

11 When the printer driver selection window appears, remove the [PCL6] checkmark and click the [PCL5e], [PS] or [PPD] checkbox so that a checkmark (☑) appears, and then click the [Next] button.



- When the PC-Fax driver is being installed, this screen does not appear. Go to the next step.
- The PS3 expansion kit is required to use the PS printer driver or the PPD driver.
- The [PPD] checkbox only appears if you are using Windows 2000/XP/Server 2003/Vista.

12 Select whether or not you wish the printer to be your default printer and click the [Next] button.

If you are installing multiple drivers, select the printer driver to be used as the default printer.

If you do not wish to set one of the printer drivers as the default printer, select [No].

13 When the printer name window appears, click the [Next] button.

If you wish to change the printer name, enter the desired name.

14 When you are asked if you wish to install the display fonts, select [No] and click the [Next] button.

When the PC-Fax driver is being installed, this screen does not appear. Go to the next step.

15 Follow the on-screen instructions.

Read the message in the window that appears and click the [Next] button.

Installation begins.



- **If you are using Windows 2000/XP/Server 2003**

If a warning message regarding the Windows logo test or digital signature appears, be sure to click the [Continue Anyway] or [Yes] button.

- **If you are using Windows Vista**

If a security warning window appears, be sure to click [Install this driver software anyway].


16 When the installation completed screen appears, click the [OK] button.

17 Click the [Close] button in the window of step 6.



After the installation, a message prompting you to restart your computer may appear. If this message appears, click the [Yes] button to restart your computer.

This completes the installation.

- After installation, see "CONFIGURING THE PRINTER DRIVER FOR THE OPTIONS INSTALLED ON THE MACHINE" (page 23) to configure the printer driver settings.
- Make sure that the port of the installed driver is the same as the port used by the PCL6 printer driver. The port used by the printer driver of the machine is indicated by a checkmark on the [Ports] tab of the printer driver properties window. (In Windows 98/Me, this is the port selected in [Print to the following port] on the [Details] tab.)
 **CHANGING THE PORT** (page 39)
- If you installed the PS printer driver or the PPD driver, the PS display fonts can be installed from the "PRINTER UTILITIES" CD-ROM that accompanies the PS3 expansion kit. See "INSTALLING THE PS DISPLAY FONTS" (page 28).

USING THE MACHINE AS A SHARED PRINTER


If you are going to use the machine as a shared printer on a Windows network with the printer driver or the PC-Fax driver installed on a print server, follow the steps below to install the printer driver or the PC-Fax driver on the client computers.

- Ask your network administrator for the server name and printer name of the machine on the network.
- For the procedure for configuring settings on the print server, see the operation manual or the Help file of the operating system. The "print server" explained here is a computer that is connected directly to the machine, and "clients" are other computers connected to the same network as the print server.
- Install the same printer driver on client computers as the printer driver that is installed on the print server.
- If the PPD driver is installed on the print server and the client computers are running Windows 98/Me/NT 4.0, see "USING THE STANDARD WINDOWS PS PRINTER DRIVER (Windows 98/Me/NT 4.0)" (page 22) to install the printer driver using the Add Printer Wizard.

1 Insert the "Software CD-ROM" into your computer's CD-ROM drive.

- If you are installing the printer driver, insert the "Software CD-ROM" that shows "Disc 1" on the front of the CD-ROM.
- If you are installing the PC-Fax driver, insert the "Software CD-ROM" that shows "Disc 2" on the front of the CD-ROM.

2 Click the [start] button, click [My Computer] (), and then double-click the [CD-ROM] icon ().

- In Windows 98/Me/2000, double-click [My Computer] and then double-click the [CD-ROM] icon.
- In Windows Vista, click the [Start] button (), click [Computer], and then double-click the [CD-ROM] icon.

3 Double-click the [Setup] icon ().

- In Windows Vista, if a message screen appears asking you for confirmation, click [Allow].

4 The "SOFTWARE LICENSE" window will appear. Make sure that you understand the contents of the license agreement and then click the [Yes] button.

5 Read the message in the "Welcome" window and then click the [Next] button.

6 Click the [Printer Driver] button.

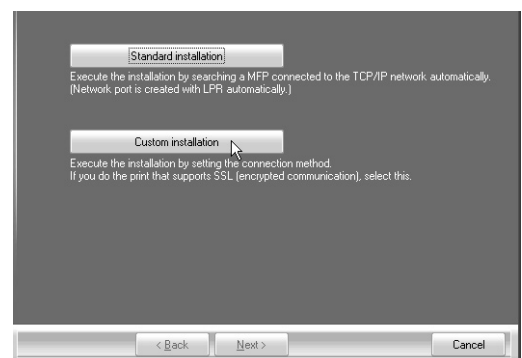
- To install the PC-Fax driver, click the [PC-Fax Driver] button.
- Before installing the software, be sure to click the [Display Readme] button and view the detailed information on the software.



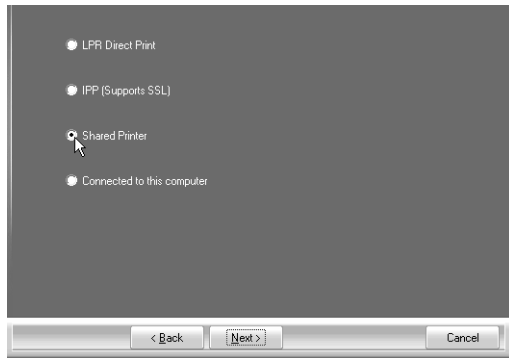
* The above screen appears when the printer driver is being installed.

7 Click the [Next] button.

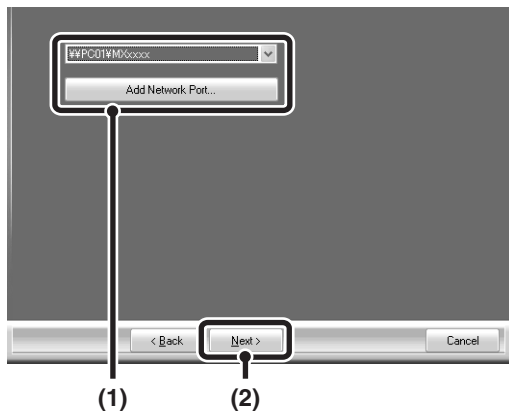
8 Click the [Custom installation] button.



9 Select [Shared Printer] and click the [Next] button.



10 Select the printer name (configured as a shared printer).



(1) Select the printer name (configured as a shared printer on a print server) from the list.

If you are using Windows 98/Me/NT 4.0/2000/XP, you can also click the [Add Network Port] button and select the printer to be shared by browsing the network in the window that appears. (In Windows Vista, the [Add Network Port] button does not appear.)

(2) Click the [Next] button.



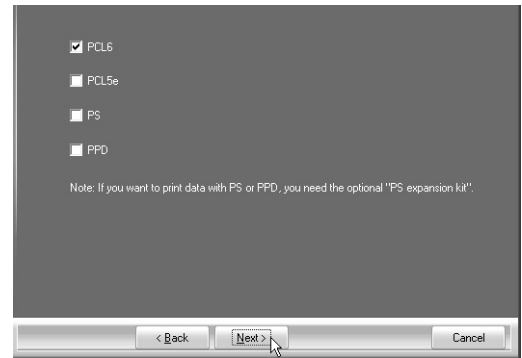
If the shared printer does not appear in the list, check the settings on the print server.

11 When the model selection window appears, select the model name of your machine and click the [Next] button.

If you are installing the PC-Fax driver, go to step 13.

12 When the printer driver selection window appears, select the printer driver to be installed and click the [Next] button.

Be sure to select the same printer driver as the printer driver installed on the print server.



- When the PC-Fax driver is being installed, this screen does not appear. Go to the next step.
- The PS3 expansion kit is required to use the PS printer driver or the PPD driver.
- The [PPD] checkbox only appears if you are using Windows 2000/XP/Server 2003/Vista.

13 Follow the on-screen instructions.

Read the message in the window that appears and click the [Next] button. Installation begins.



- **If you are using Windows 2000/XP/Server 2003**
If a warning message regarding the Windows logo test or digital signature appears, be sure to click the [Continue Anyway] or [Yes] button.
- **If you are using Windows Vista**
If a security warning window appears, be sure to click [Install this driver software anyway].

14 When the installation completed screen appears, click the [OK] button.

15 Click the [Close] button in the window of step 6.




After the installation, a message prompting you to restart your computer may appear. If this message appears, click the [Yes] button to restart your computer.

This completes the installation.

If you installed the PS printer driver or the PPD driver, the PS display fonts can be installed from the "PRINTER UTILITIES" CD-ROM that accompanies the PS3 expansion kit. See "INSTALLING THE PS DISPLAY FONTS" (page 28).

USING THE STANDARD WINDOWS PS PRINTER DRIVER (Windows 98/Me/NT 4.0)

If the PS3 expansion kit is installed on the machine and you wish to use the standard Windows 98/Me/NT 4.0 PS printer driver, follow the steps below to install the PPD driver using the Add Printer Wizard.

-  The CD-ROM does not include software for Windows NT 4.0. Contact your dealer or nearest authorized service representative if you want software for Windows NT 4.0.
- If you are using Windows 2000/XP/Server 2003/Vista, you can install the PPD driver from the installer.
- Be sure to view the Readme file (Readme.txt) before installing the PPD driver. If you are using Windows 98/Me, the Readme file is in the [EnglishA]* folder of the "Software CD-ROM". If you are using Windows NT 4.0, the Readme file will be in the [EnglishA]* folder inside the folder that contains the extracted files after you get the software. For the location of the folder, see step 4.

1 Insert the "Software CD-ROM" into your computer's CD-ROM drive.

Insert the "Software CD-ROM" that shows "Disc 1" on the front of the CD-ROM.

2 Click the [Start] button, select [Settings] and then click [Printers].

3 Double-click the [Add printer] icon.

The "Add Printer Wizard" will appear.

4 Follow the on-screen instructions.

When you are asked to specify the path of the PPD file, enter the path as follows.

Substitute the letter of your CD-ROM drive for "R" in the following paths.


Operating system	PPD file path
Windows 98/Me	R:\Drivers\Printer \EnglishA*\PPD\9XME
Windows NT 4.0	(Folder containing extracted files) \EnglishA*\PPD\NT40

After installation, see "CONFIGURING THE PRINTER DRIVER FOR THE OPTIONS INSTALLED ON THE MACHINE" (page 23) to configure the printer driver settings.

* "EnglishA" in North America. "English" in Europe.

► Installing the resident font information (Windows 98/Me)

If you have installed the PPD driver on Windows 98/Me and will be using the resident fonts in the machine, you must install the resident font information. Follow the procedure below to install the resident font information.

-  Before installing the resident font information, be sure to install the PPD driver.
- In the event that a resident font cannot be selected in a software application, install the resident font information again.

1 Insert the "Software CD-ROM" into your computer's CD-ROM drive.

Insert the "Software CD-ROM" that shows "Disc 1" on the front of the CD-ROM.

2 Double-click [My Computer] (🖥️) and then double-click the [CD-ROM] icon (💿).

3 Double-click the [Drivers] folder, the [Printer] folder, the [EnglishA] folder (the [English] folder in areas other than the U.S.), the [PPD] folder, the [9XME] folder, and then [PFMSetup.exe].

4 Follow the on-screen instructions.

After the resident font information has been installed, restart your computer.

CONFIGURING THE PRINTER DRIVER FOR THE OPTIONS INSTALLED ON THE MACHINE


After installing the printer driver, you must configure the printer driver settings appropriately for the options that have been installed and the size and type of paper loaded in the machine. Follow the steps below to configure the printer driver.



If the PPD driver is installed, see "When the PPD driver is installed" (page 25).

► When the PCL printer driver or PS printer driver is installed

1 Click the [start] button and then click [Printers and Faxes].

- In Windows 98/Me/NT 4.0/2000, click the [Start] button, select [Settings], and then click [Printers].
- In Windows Vista, click the [Start] button (), click [Control Panel], and then click [Printer].



If [Printers and Faxes] does not appear in the [start] menu in Windows XP, click the [start] button, click [Control Panel], click [Printers and Other Hardware], and then click [Printers and Faxes].

2 Open the printer properties window.

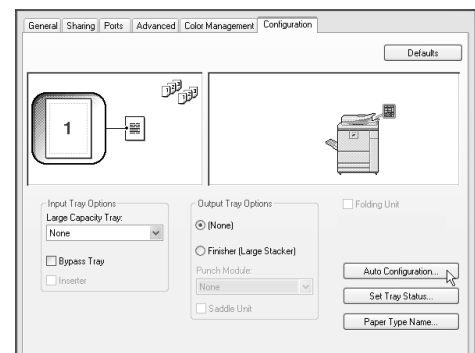
- (1) Right-click the printer driver icon of the machine.
- (2) Select [Properties].

3 Click the [Configuration] tab.

In Windows 98/Me, click the [Setup] tab and then click the [Configuration] tab in the window that appears.

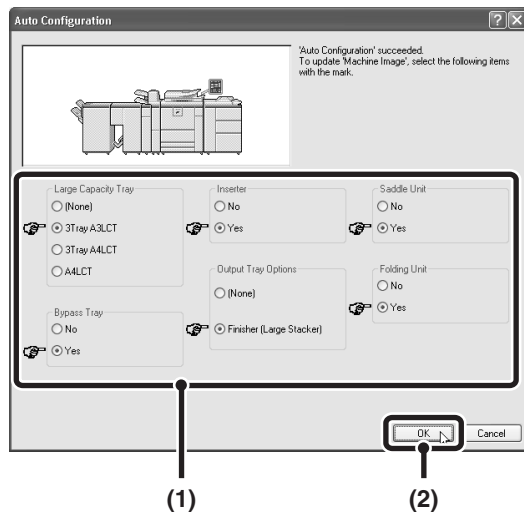
4 Click the [Auto Configuration] button.

The settings are automatically configured based on the detected machine status.



5 Configure the image of the machine.

An image of the machine is formed in the printer driver configuration window based on the options that are installed.



(1) Select the options that are installed on the machine.

(2) Click the [OK] button.



To cancel the image settings, click the [Cancel] button.

6 Click the [OK] button in the printer properties window.



If automatic configuration fails, configure the settings manually.

- You can check the options that are installed and the tray settings by printing out the "All Custom Setting List" in the system settings of the machine. Follow these steps to print out the "All Custom Setting List": Press the [SYSTEM SETTINGS] key, touch the [List Print (User)] key, and then touch the [Print] key of "All Custom Setting List".
- Click the [Set Tray Status] button and the [Paper Type Name] button to check the settings of each.
Set Tray Status: The "Tray Settings" in "Paper Tray Settings" in system settings of the machine are reflected in the settings shown here. Specify the size and type of paper loaded in each tray.
Paper Type Name: The "Paper Type Registration" settings in "Paper Tray Settings" in the system settings of the machine are reflected in the settings shown here. If a user type name (1 to 10) was changed, enter the changed name.

► When the PPD driver is installed

1 Click the [start] button and then click [Printers and Faxes].

- In Windows 98/Me/NT 4.0/2000, click the [Start] button, select [Settings], and then click [Printers].
- In Windows Vista, click the [Start] button (), click [Control Panel], and then click [Printer].

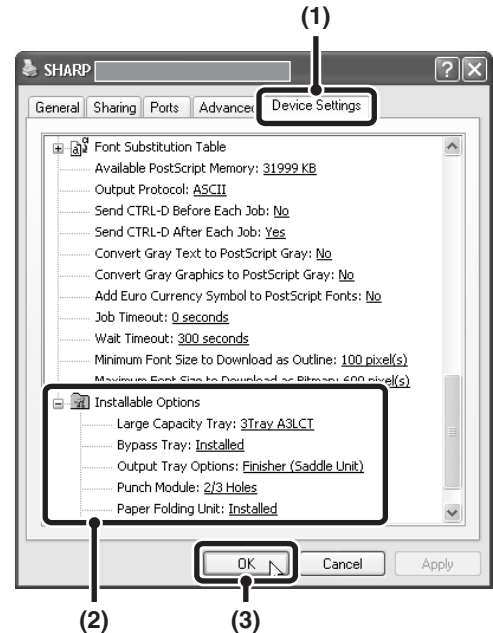


If [Printers and Faxes] does not appear in the [start] menu in Windows XP, click the [start] button, click [Control Panel], click [Printers and Other Hardware], and then click [Printers and Faxes].

2 Open the printer properties window.

- (1) Right-click the printer driver icon of the machine.
- (2) Select [Properties].

3 Configure the printer driver for the options installed on the machine.



(1) Click the [Device Settings] tab.

In Windows 98/Me, click the [Device Options] tab.

(2) Configure each item based on the machine configuration.

The items and the procedures for configuring the items vary depending on the operating system version.

(3) Click the [OK] button.



You can check the options that are installed on the machine by printing out the "All Custom Setting List" in the system settings. Follow these steps to print out the "All Custom Setting List": Press the [SYSTEM SETTINGS] key, touch the [List Print (User)] key, and then touch the [Print] key of "All Custom Setting List".

INSTALLING THE PRINTER STATUS MONITOR

Printer Status Monitor is a printer utility that allows general users to check the current status of the machine on their computer screen, such as whether or not the machine is ready to print. The Printer Status Monitor shows error information such as paper misfeeds, printer configuration information (whether or not a finisher is installed, etc.) as an image, the paper sizes that can be used, and the amount of paper remaining.



The Printer Status Monitor cannot be used in the following situations:

- When the machine is connected by a USB cable.
- When printing to the machine using the IPP function.


Supported operating systems: Windows 98/Me/NT 4.0*/2000*/XP*/Server 2003*/Vista*

* Administrator's rights are required to install the software.

1 Insert the "Software CD-ROM" into your computer's CD-ROM drive.

Insert the "Software CD-ROM" that shows "Disc 1" on the front of the CD-ROM.

2 Click the [start] button, click [My Computer] (), and then double-click the [CD-ROM] icon ().

- In Windows 98/Me/2000, double-click [My Computer] and then double-click the [CD-ROM] icon.
- In Windows Vista, click the [Start] button (), click [Computer], and then double-click the [CD-ROM] icon.

3 Double-click the [Setup] icon ().



In Windows Vista, if a message screen appears asking you for confirmation, click [Allow].

4 The "SOFTWARE LICENSE" window will appear. Make sure that you understand the contents of the license agreement and then click the [Yes] button.



You can show the "SOFTWARE LICENSE" in a different language by selecting the desired language from the language menu. To install the software in the selected language, continue the installation with that language selected.

5 Read the message in the "Welcome" window and then click the [Next] button.

6 Click the [Printer Status Monitor] button.

Before installing the software, be sure to click the [Display Readme] button and view the detailed information on the software.



7 Follow the on-screen instructions.**8 When the installation completed screen appears, click the [Finish] button.**

To have the Printer Status Monitor start automatically when your computer is started, select the [Add this program to your Startup folder] checkbox ☒ and click the [Finish] button.

9 Click the [Close] button in the window of step 6.

After the installation, a message prompting you to restart your computer may appear. If this message appears, click the [Yes] button to restart your computer.



This completes the installation.


For the procedures for using the Printer Status Monitor, see the Help file. Follow these steps to view the Help file: Click the Windows [start] button, select [All Programs] ([Programs] in versions of Windows other than Windows XP/Server 2003), select [SHARP Printer Status Monitor] and then select [Help].

INSTALLING THE PS DISPLAY FONTS

Fonts that can be used by the PS printer driver are contained on the "PRINTER UTILITIES" CD-ROM that accompanies the PS3 expansion kit. Install these fonts as needed for the PS printer driver.

1 Insert the "PRINTER UTILITIES" CD-ROM that accompanies the PS3 expansion kit into your computer's CD-ROM drive.

2 Click the [start] button, click [My Computer] (), and then double-click the [CD-ROM] icon ().

- In Windows 98/Me/NT 4.0/2000, double-click [My Computer], and then double-click the [CD-ROM] icon.
- In Windows Vista, click the [Start] button (), click [Computer], and then double-click the [CD-ROM] icon.

3 Double-click the [Setup] icon ().



In Windows Vista, if a message screen appears asking you for confirmation, click [Allow].

4 The "SOFTWARE LICENSE" window will appear. Make sure that you understand the contents of the license agreement and then click the [Yes] button.



You can show the "SOFTWARE LICENSE" in a different language by selecting the desired language from the language menu. To install the software in the selected language, continue the installation with that language selected.

5 Read the message in the "Welcome" window and then click the [Next] button.

6 Click the [PS Display Font] button.



7 Follow the on-screen instructions.

8 Click the [Close] button in the screen of step 6.


3 SETUP IN A MACINTOSH ENVIRONMENT

This chapter explains how to install the PPD file to enable printing from a Macintosh and how to configure the printer driver settings.

- MAC OS X: this page
(v10.1.5, v10.2.8, v10.3.9, v10.4 - v10.4.8)
- MAC OS 9.0 - 9.2.2: page 34

- To use the machine as a printer in a Macintosh environment, the printer expansion kit and PS3 expansion kit are necessary. In addition, the machine must be connected to a network. A USB connection cannot be used.
- The PC-Fax driver cannot be used in a Macintosh environment.

MAC OS X

 The explanations of screens and procedures are primarily for Mac OS X v10.4. The screens may vary in other versions of the operating system.

1 Insert the "Software CD-ROM" into your computer's CD-ROM drive.

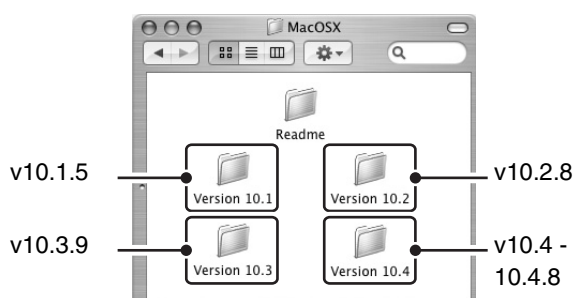
Insert the "Software CD-ROM" that shows "Disc 2" on the front of the CD-ROM.

2 Double-click the [CD-ROM] icon () on the desktop.

3 Double-click the [MacOSX] folder.

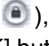
Before installing the software, be sure to read "ReadMe First". "ReadMe First" is in the [US-English] folder ([English] folder in areas other than the U.S.) in the [Readme] folder.

4 Double-click the folder corresponding to the versions of the operating system.



5 Double-click the [MX-B03] icon ().




- If the "Authorization" window appears in Mac OS X v10.1.5, click the lock icon (), enter the password, and click the [OK] button.
- If the "Authenticate" window appears in Mac OS X v10.2.8, enter the password and click the [OK] button.

6 Click the [Continue] button.



7 The License Agreement window will appear. Make sure that you understand the contents of the license agreement and then click the [Continue] button.

A message will appear asking you if you agree to the terms of the license. Click the [Agree] button.

 If the license appears in the different language, change the language in the language menu.

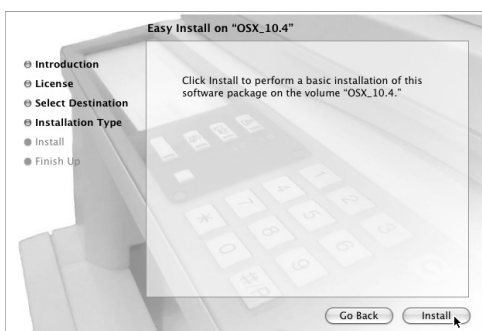
8 Select the hard drive where the PPD file will be installed and click the [Continue] button.


Be sure to select the hard drive on which your operating system is installed.



9 Click the [Install] button.

Installation begins.



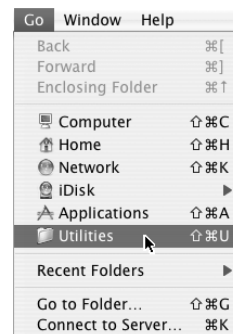
 If the "Authenticate" window appears, enter the password and click the [OK] button.

10 When the message "The software was successfully installed" appears in the installation window, click the [Close] button.

This completes the installation of the software. Next, configure the printer driver settings.


11 Select [Utilities] from the [Go] menu.

If you are using Mac OS X v10.1.5 or v10.2.8, select [Applications] from the [Go] menu.



12 Double-click the [Printer Setup Utility] icon ().

If you are using Mac OS X v10.1.5 or v10.2.8, double-click the [Utilities] folder and then double-click the [Print Center] icon.

 If this is the first time you are installing a printer driver on your computer, a confirmation message will appear. Click the [Add] button.

13 Click [Add].

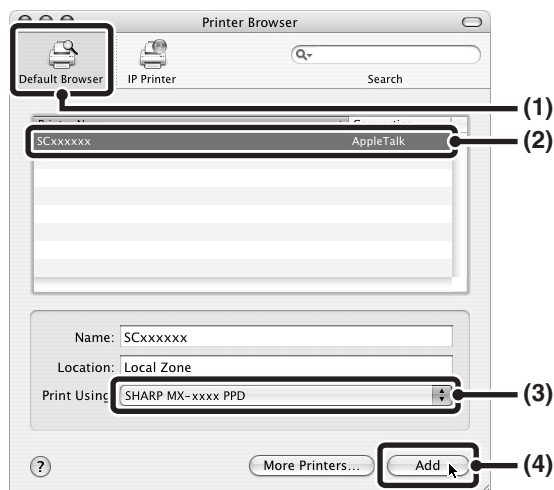
If you are using Mac OS X v10.1.5, click the [Add Printer] button.



14 Configure the printer driver.

- The procedure for configuring the printer driver varies depending on the operating system version. The procedure for versions 10.4 - 10.4.8 and the procedure for other versions are explained separately below.
- The machine can print using the IPP function. If you wish to use the IPP function, see "Printing using the IPP function" (page 33) to configure the printer driver settings.

v10.4 - 10.4.8



(1) Click the [Default Browser] icon.

If multiple AppleTalk zones are displayed, select the zone that includes the printer from the menu.

(2) Click the machine's model name.

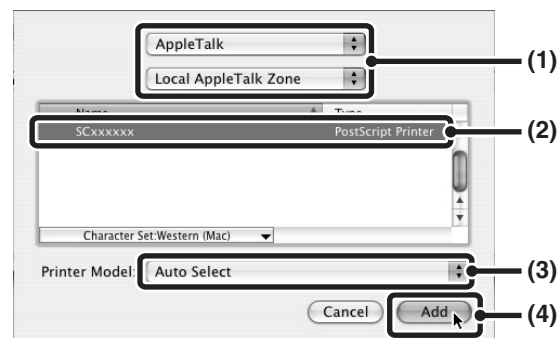
- The machine's model name usually appears as [SCxxxxxx]. ("xxxxxx" is a sequence of characters that varies depending on your model.)
- The PPD file of the machine is automatically selected.

(3) Make sure that the PPD file of your model is selected.

(4) Click the [Add] button.

The PPD file of the machine is automatically selected and the peripheral devices installed on the machine are detected and automatically configured.

v10.1.5, v10.2.8, v10.3.9



(1) Select [AppleTalk].

If multiple AppleTalk zones are displayed, select the zone that includes the printer from the menu.

(2) Click the machine's model name.

The machine's model name usually appears as [SCxxxxxx]. ("xxxxxx" is a sequence of characters that varies depending on your model.)

(3) Select the PPD file of the machine.

- If you are using Mac OS X v10.1.5, select [Other]. The PPD file selection window will appear. Click "Startup disk name" - [Library] - [Printers] - [PPDs] - [Contents] - [Resources] - [en.lproj] - "PPD file for your model", and then click the [Choose] button.
- If you are using Mac OS X v10.2.8, select [Sharp] and click the PPD file of your model.
- If you are using Mac OS X v10.3.9, select [Auto Select].

(4) Click the [Add] button.

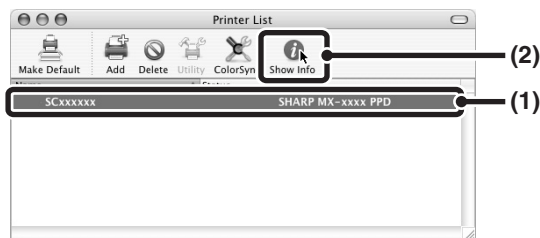
If you are using Mac OS X v10.3.9, the PPD file of the machine is automatically selected and the peripheral devices installed on the machine are detected and automatically configured.



The PPD file is installed in the following folders on the startup disk.
[Library] - [Printers] - [PPDs] - [Contents] - [Resources] - [en.lproj]

If you are using Mac OS X v10.1.5, this completes the configuration of the printer driver. If you are using a version other than Mac OS X v10.1.5, go to the next step.

15 Display printer information.



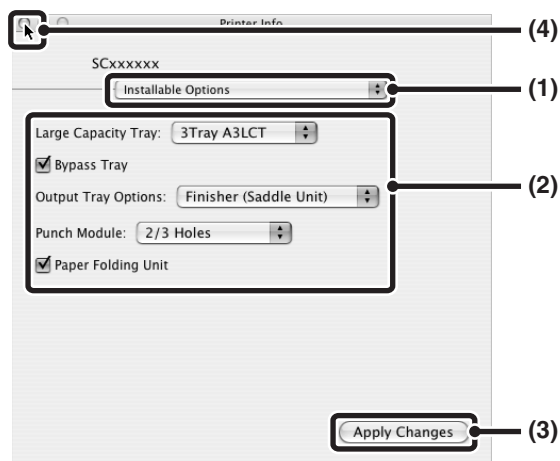
(1) Click the machine's name.

(2) Click [Show Info].

If you are using Mac OS X v10.2.8, select [Show Info] from the [Printers] menu.

16 Select the machine configuration.

If you selected [Auto Select] in (3) of step 14, the machine configuration is detected and automatically configured. Check the configured settings to make sure they are correct.



(1) Select [Installable Options].

(2) Select the options that are installed on the machine.

(3) Click the [Apply Changes] button.

(4) Click to close the window.



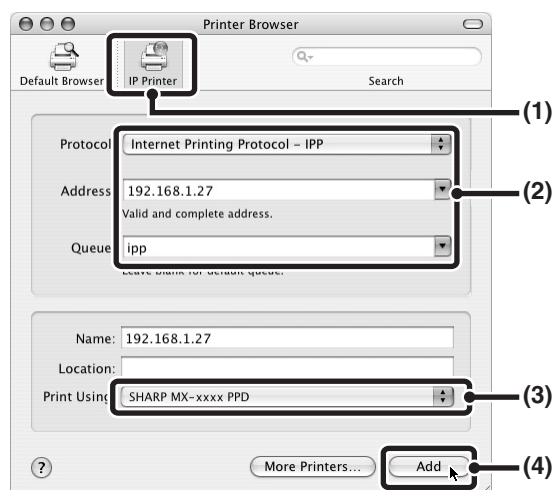
You can check the options that are installed on the machine by printing out the "All Custom Setting List" in the system settings. Follow these steps to print out the "All Custom Setting List": Press the [SYSTEM SETTINGS] key, touch the [List Print (User)] key, and then touch the [Print] key of "All Custom Setting List".

This completes the configuration of the printer driver.

► Printing using the IPP function

The machine can print using the IPP function. When the machine is in a remote location, this function can be used in place of the fax function to print a higher quality image than a fax. If you wish to use the IPP function, follow these steps to select the PPD file when configuring the printer driver (step 14 on page 31).

v10.4 - 10.4.8

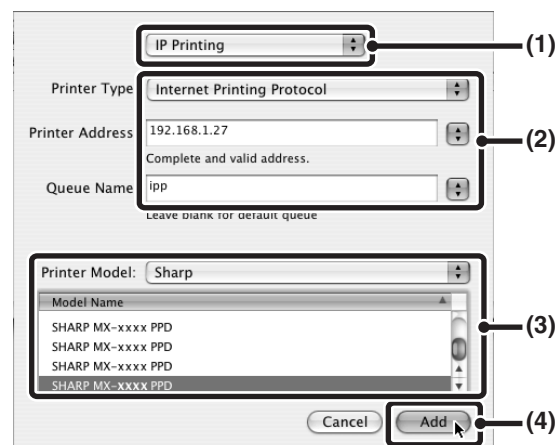


- (1) Click the [IP Printer] icon.
- (2) Select [Internet Printing Protocol] in "Protocol". Enter the address of the machine (IP address or domain name) and the queue name.
Enter "ipp" in "Queue".
- (3) Select [Sharp] in "Print Using" and click the PPD file of your model.

- (4) Click the [Add] button.

🔍 Checking the IP address of the machine (page 7)

v10.1.5, v10.2.8, v10.3.9



- (1) Select [IP Printing].
If you are using Mac OS X v10.1.5, select [LPR Printers using IP].
- (2) Select [Internet Printing Protocol] in "Printer Type". Enter the address of the machine (IP address or domain name) and the "Queue Name".
 - If you are using Mac OS X v10.1.5, enter the address of the machine (IP address or domain name) in "LPR Printer's Address".
 - If you are using Mac OS X v10.2.8, enter the address of the machine (IP address or domain name) in "Printer's Address".
 - Enter "ipp" in "Queue Name".


- (3) Select [Sharp] in "Printer Model" and click the PPD file of your model.

If you are using Mac OS X v10.1.5, select [Other]. The PPD file selection window will appear. Click "Startup disk name" - [Library] - [Printers] - [PPDs] - [Contents] - [Resources] - [en.lproj] - "PPD file for your model", and then click the [Choose] button.

- (4) Click the [Add] button.

🔍 Checking the IP address of the machine (page 7)

MAC OS 9.0 - 9.2.2

 If you are using Mac OS 9.0 to 9.2.2, make sure that "LaserWriter 8" has been installed and that the "LaserWriter 8" checkbox is selected ☒ in "Extensions Manager" in "Control Panels". If not, install it from the system CD-ROM supplied with your Macintosh computer.

1 Insert the "Software CD-ROM" into your computer's CD-ROM drive.

Insert the "Software CD-ROM" that shows "Disc 2" on the front of the CD-ROM.

2 Double-click the [CD-ROM] icon () on the desktop.

3 Double-click the [MacOS] folder.

Before installing the software, be sure to read "ReadMe First". "ReadMe First" is in the [US-English] folder ([English] folder in areas other than the U.S.) in the [Readme] folder.

4 Double-click the [Installer] icon ().

5 Click the [Install] button.



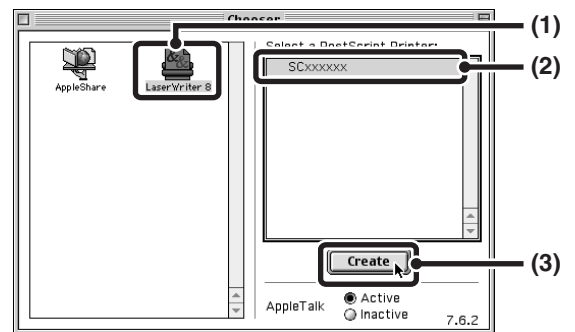
6 The License Agreement window will appear. Make sure that you understand the contents of the license agreement and then click the [Yes] button.

7 Read the message in the window that appears and click the [Continue] button.

Installation of the PPD file begins.
After the installation, a message prompting you to restart your computer will appear. Click the [OK] button and restart your computer.

8 Select [Chooser] from the Apple Menu.

9 Create a printer.



(1) Click the [LaserWriter 8] icon.

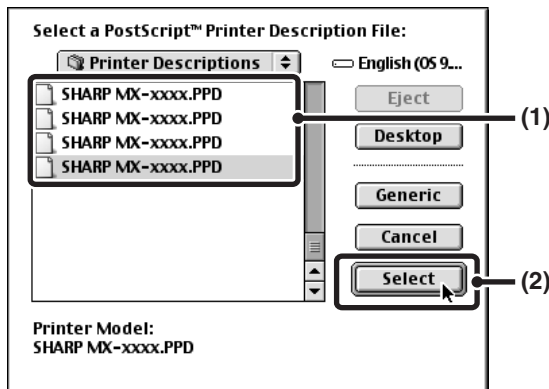
If multiple AppleTalk zones are displayed, select the zone that includes the printer.

(2) Click the machine's model name.

The machine's model name usually appears as [SCxxxxxx]. ("xxxxxx" is a sequence of characters that varies depending on your model.)

(3) Click the [Create] button.

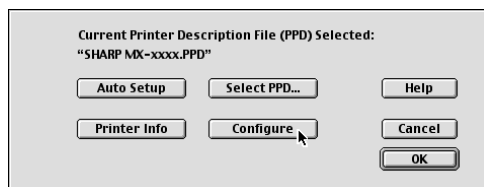
This completes the installation of the software. Next, configure the printer driver settings.

10 Select the PPD file.

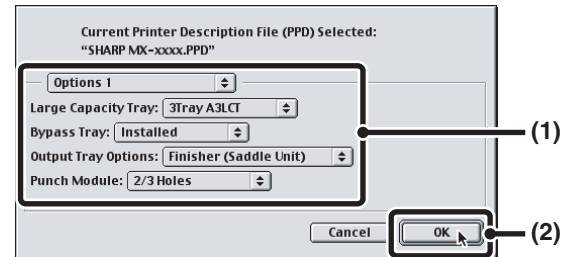
- (1) Click the PPD file for your model.
- (2) Click the [Select] button.



- If the above dialog box does not appear and you return to the "Chooser" dialog box, follow these steps to select the PPD file manually.
 - (1) Make sure that the machine is selected in the "Select a PostScript Printer" list, and then click the [Setup] button followed by the [Select PPD] button.
 - (2) Select the PPD file for your model and click the [Open] button.
 - (3) Click the [OK] button.
- The PPD file is installed in the [Printer Descriptions] folder in the [Extensions] folder.

11 Make sure that the machine is selected in the "Select a PostScript Printer" list and then click the [Setup] button.**12 Click the [Configure] button.**

- To automatically configure the settings based on the installed machine options that are detected, click the [Auto Setup] button.

13 Select the machine configuration.

- (1) Select the options that are installed on the machine.
- (2) Click the [OK] button.



- You can check the options that are installed on the machine by printing out the "All Custom Setting List" in the system settings. Follow these steps to print out the "All Custom Setting List": Press the [SYSTEM SETTINGS] key, touch the [List Print (User)] key, and then touch the [Print] key of "All Custom Setting List".

14 Click the [OK] button in the window of step 12 to close the window.**15 Click the close box (☐) to close the "Chooser".**

This completes the configuration of the printer driver.

Installing the screen fonts

The screen fonts for Mac OS 9.0 - 9.2.2 are contained in the [Font] folder of the "PRINTER UTILITIES" CD-ROM that accompanies the PS3 expansion kit. Copy the fonts that you wish to install to the [System Folder] of the startup disk.



- If you experience problems that may be due to the installed screen fonts, immediately delete the installed fonts from the system.

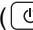

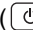
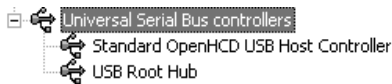
4 TROUBLESHOOTING AND USEFUL INFORMATION

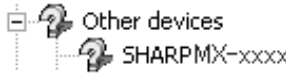
TROUBLESHOOTING

This section provides solutions to possible installation problems. See the following table of contents to locate the appropriate page for your question or problem.

- The software cannot be installed. 36
- The machine is not detected (when connected to a network). 36
- The plug and play screen does not appear (USB connection in Windows). 37
- The printer driver is not installed correctly by plug and play (USB connection in Windows). 38
- The printer driver cannot be installed (Windows 2000/XP/Server 2003) 38

Problem	Point to check	Solution
The software cannot be installed.	Is there sufficient free space on your hard drive?	Delete any unneeded files and applications to increase free space on your hard drive.
	Are you using an operating system that is not supported?	Make sure that the software can run on your operating system. For detailed information on installation requirements for each software program in Windows, click the [Display Readme] button in the installer. In a Macintosh environment, this can be checked in "ReadMe First" in the [US-English] folder ([English] folder in areas other than the U.S.) in the [Readme] folder of the "Software CD-ROM".
The machine is not detected (when connected to a network).	Is the IP address of the machine configured?	If the IP address of the machine is not configured, the machine will not be detected. Make sure that the IP address is configured correctly in "Network Settings" in the machine's system settings (administrator). → System Settings (Administrator) > "Network Settings"
	Is your computer connected to the same network as the machine?	Windows: If the machine and your computer are not connected to the same local area network, the machine will not be detected. If the two are connected to different sub-networks, click the [Specify condition] button and enter the machine's name (host name) or IP address to search for the machine. Macintosh: If multiple AppleTalk zones exist, select the zone to which the machine is connected from the menu.

Problem	Point to check	Solution
The machine is not detected (when connected to a network).	Is the machine power on?	If the machine is powered off, it will not be detected. Switch on the main power switch and the [POWER] key () in that order. (In Windows, search again after powering on the machine.)
	Is your computer connected correctly to the machine?	Make sure that the cable is connected securely to the LAN connectors on your computer and the machine. Check the connections at the hub as well.  CONNECTING TO A NETWORK (page 7)
The plug and play screen does not appear (USB connection in Windows).	Is the machine power on?	When a USB cable is connected, make sure the power of the machine is "ON" and then connect a USB cable to the machine. When the machine is not powered on, switch on the main power switch and the [POWER] key () in that order.
	Can your computer use a USB connection?	<p>Check your computer whether or not a USB interface can be used on the Device Manager in your computer. (For information on "Device Manager", see Help in Windows.)</p> <p>If USB can be used, your controller chipset type and root hub will appear in "Universal Serial Bus controllers" in "Device Manager". (The items that appear will vary depending on your computer.)</p>  <p>If these two items appear, USB should be useable. If a yellow exclamation point appears next to "Universal Serial Bus controllers" or the two items do not appear, refer to your computer manual or check with the manufacturer of your computer to enable USB and then reinstall the printer driver.</p>

Problem	Point to check	Solution
The printer driver is not installed correctly by plug and play (USB connection in Windows).	Did you connect the machine to your computer before installing the printer driver?	<p>In Windows 2000/XP/Server 2003/Vista, if the machine was connected to your computer with a USB cable before the printer driver was installed from the installer, check if information on the unsuccessful installation remains in "Device Manager". (For information on "Device Manager", see Help in Windows.)</p> <p>If the model name of the machine appears in "Other devices" in "Device Manager", delete it, restart your computer, and install the printer driver again.</p> 

► The printer driver cannot be installed (Windows 2000/XP/Server 2003)

If the printer driver cannot be installed on Windows 2000/XP/Server 2003, follow the steps below to check your computer settings.

1 Click the [start] button and then click [Control Panel].

In Windows 2000, click the [Start] button, point to [Settings], and click [Control Panel].

2 Click [Performance and Maintenance] and then [System].

In Windows 2000, double-click the [System] icon.

3 Click the [Hardware] tab and then the [Driver Signing] button.

4 Check the settings in "What action do you want Windows to take?" ("File signature verification" in Windows 2000).



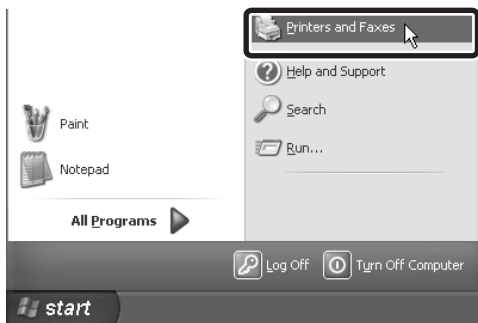
If [Block] is selected, the printer driver cannot be installed. Select [Warn] and install the printer driver again.


CHANGING THE PORT

When using the machine in a Windows environment, follow the steps below to change the port when you have changed the IP address of the machine or have installed the PC-Fax driver when the machine is connected with a USB cable.

1 Click the [start] button and then click [Printers and Faxes].

- In Windows 98/Me/NT 4.0/2000, click the [Start] button, select [Settings], and then click [Printers].
- In Windows Vista, click the [Start] button (), click [Control Panel], and then click [Printer].

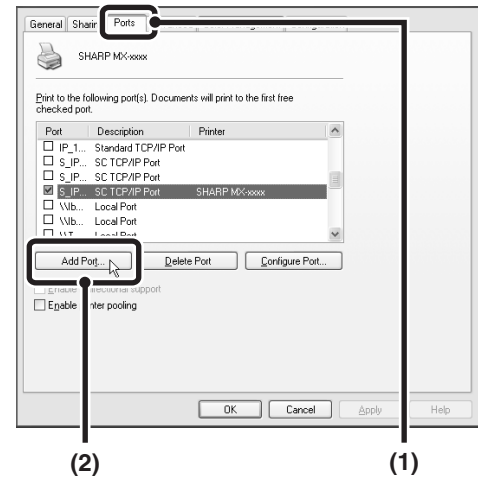


 If [Printers and Faxes] does not appear in the [start] menu in Windows XP, click the [start] button, click [Control Panel], click [Printers and Other Hardware], and then click [Printers and Faxes].

2 Open the printer properties window.

- (1) Right-click the printer driver icon of the machine.
- (2) Select [Properties].


3 Adding or changing a port.



(1) Click the [Ports] tab.

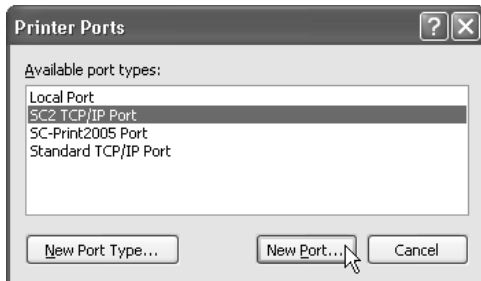
In Windows 98/Me, click the [Details] tab.

(2) Click the [Add Port] button.

 To change to a previously created port such as USB port, select the desired port (USB001, etc.) from the list and click the [Apply] button. This changes the port.

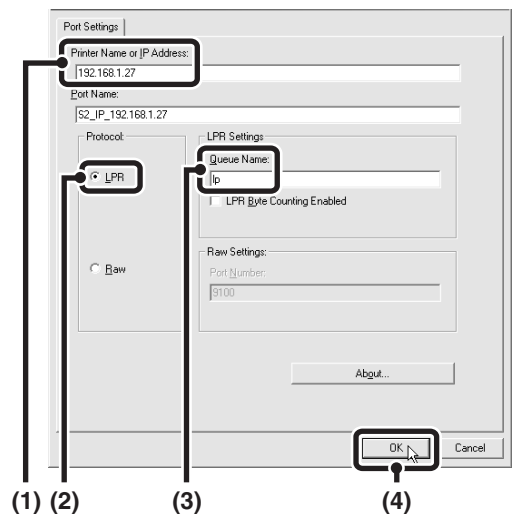
4 Select [SC TCP/IP Port] and then click the [New Port] button.

In Windows 98/Me, select [Other], [SC TCP/IP Port], and then click the [OK] button.



- The "SC TCP/IP Port" is added when the printer driver is installed using a "Standard installation", or a "Custom installation" with "LPR Direct Print" selected.
- If the printer driver is installed using a "Custom installation" with "IPP" selected, the [SC-Print2005 Port] is added. If you need to change the printer port when the machine is connected to an intranet or a wide area network (WAN) using the IPP function, select [SC-Print2005 Port], click the [New Port] button (the [OK] button in Windows 98/Me), and follow the on-screen instructions to create the port again.

5 Create the new port.



(1) Enter the machine's IP address.

Checking the IP address of the machine (page 7)

(2) Make sure that [LPR] is selected.

(3) Make sure that [lp] is entered.

(4) Click the [OK] button.

6 Click the [Close] button in the screen of step 4.

In Windows 98/Me, this step is not required. Go to the next step.

7 Make sure the created printer port is selected in the printer properties window and then click the [Apply] button.

► When using a port created with "Standard TCP/IP Port"

When using a port created using "Standard TCP/IP Port" in Windows 2000/XP/Server 2003/Vista, in the screen that appears after you click the [Configure Port] button in the screen of step 3, make sure the [SNMP Status Enabled] checkbox is not selected (☐). If the [SNMP Status Enabled] checkbox is selected (☒) , it may not be possible to print correctly.

REMOVING THE SOFTWARE

To remove the printer driver or software installed using the installer, follow the steps below.

Windows

1 Click the [start] button and then click [Control Panel].

In Windows 98/Me/NT 4.0/2000, click the [Start] button, point to [Settings], and click [Control Panel].

2 Click [Add or Remove Programs].

- In Windows 98/Me/NT 4.0/2000, double-click the [Add/Remove Programs] icon.
- In Windows Vista, click [Uninstall a program].

3 Select the program or driver that you wish to delete.

For more information, see the manual for the operating system or Help.

4 Restart your computer.

Mac OS X

1 Delete the printer that uses the machine's PPD file from the printer list.

To show the printer list, see step 11 and 12 of "MAC OS X" (page 29).

2 Delete the PPD file.

The PPD file has been copied to the following folder on the startup disk.

[Library] - [Printers] - [PPDs] - [Contents] - [Resources] - [en.lproj]

Delete the PPD file of the machine from this folder.

3 Delete the installation information.

The installation information file has been copied to the following folder on the startup disk.

[Library] - [Receipts]

Delete the [MX-B03.pkg] file from this folder.

Mac OS 9.0 - 9.2.2

After deleting the icon of the printer that uses the machine's PPD file from the desktop, follow the steps below.

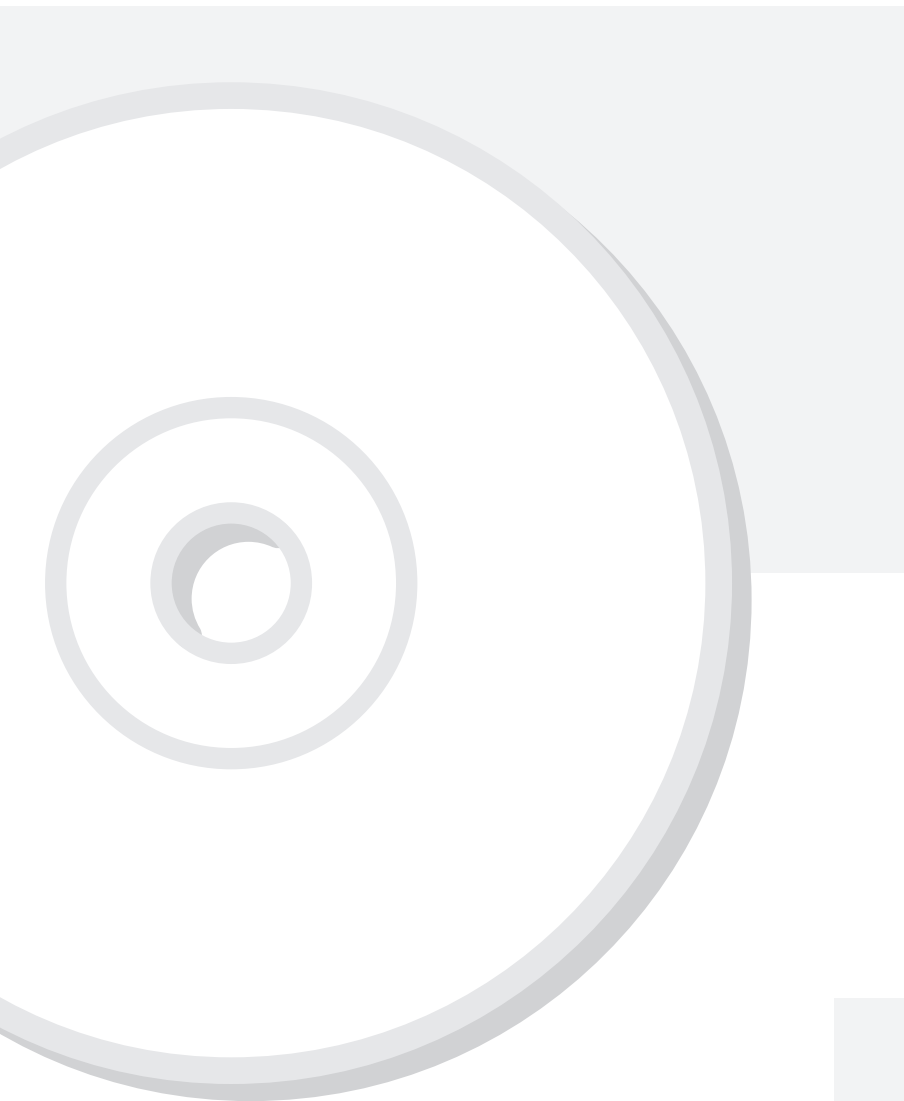
1 Insert the "Software CD-ROM" into your CD-ROM drive.

Insert the "Software CD-ROM" that shows "Disc 2" on the front of the CD-ROM.

2 Double-click the [CD-ROM] icon () on the desktop and double-click the [MacOS] folder.

3 Double-click the [Installer] icon ().

4 Select [Remove] in the Install menu and click the [Remove] button.



SHARP®
SHARP CORPORATION

PRINTED IN FRANCE
TINSE3788GHZZ

